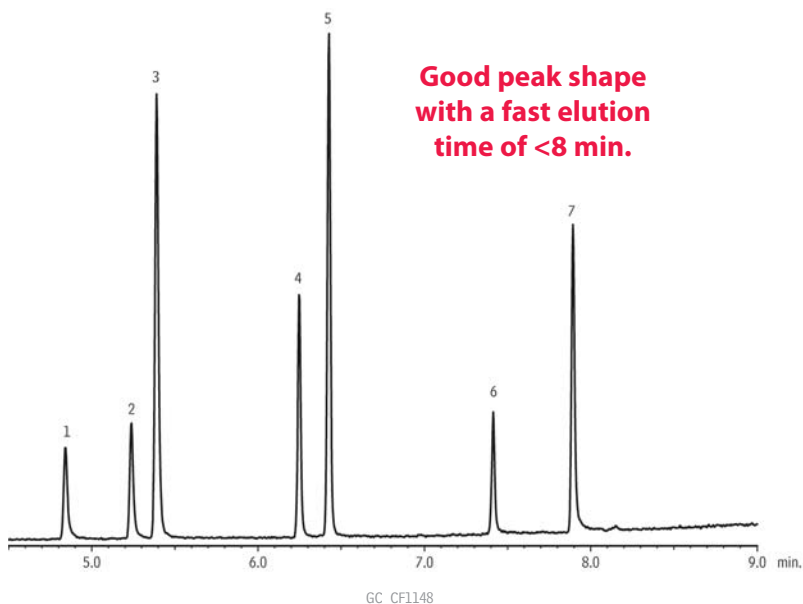


NEW!

Benzodiazepines (15 µg/mL)

Rxi®-5Sil MS



Good peak shape
with a fast elution
time of <8 min.

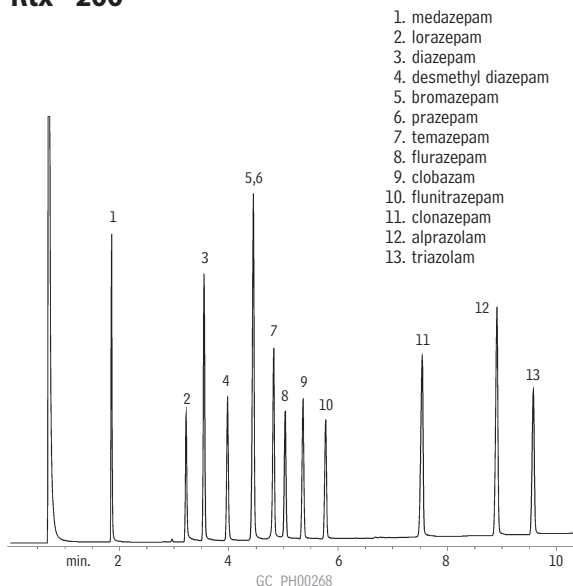
Peaks

1. Oxazepam
2. Lorazepam
3. Diazepam
4. Flunitrazepam
5. Prazepam
6. Clonazepam
7. Alprazolam

Column	Rxi®-5Sil MS, 30 m, 0.25 mm ID, 0.25 µm (cat.# 13623)
Sample	
Diluent:	Butyl chloride
Conc.:	15 µg/mL
Injection	
Inj. Vol.:	1 µL splitless (hold 1 min.)
Liner:	3.5mm Gooseneck Splitless w/Wool (cat.# 22286-200.1)
Inj. Temp.:	280 °C
Purge Flow:	32.2 mL/min. (20:1 split)
Oven	
Oven Temp:	200 °C to 330 °C at 15 °C/min. (hold 3 min.)
Carrier Gas	He, constant linear velocity
Linear Velocity:	50 cm/sec., 23.7 psi, 163.4kPa @ 200 °C
Detector	MS
Mode:	Scan
Transfer Line	
Temp.:	280 °C
Analyzer Type:	Quadrupole
Source Temp.:	200 °C
Electron Energy:	70 eV
Solvent Delay	
Time:	4 min.
Tune Type:	PFTBA
Ionization Mode:	EI
Scan Range:	50-350 amu
Scan Rate:	5 scans/sec.
Instrument	Shimadzu 2010 GC & QP2010+ MS

Benzodiazepines (Basic Drugs) (Underivatized)

Rtx®-200

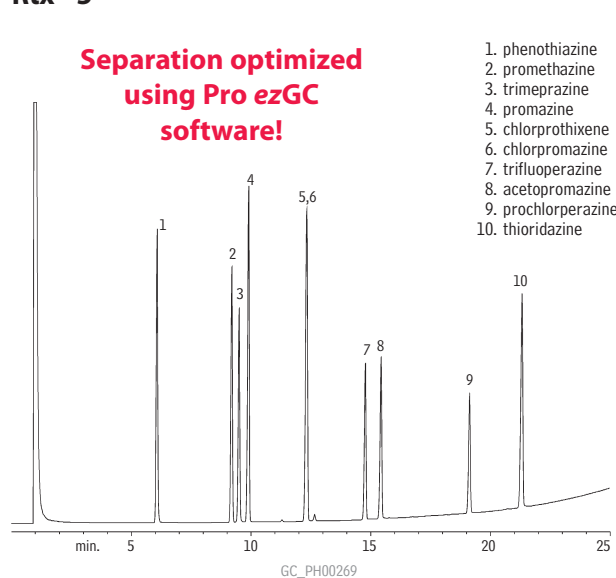


1. medazepam
2. lorazepam
3. diazepam
4. desmethyl diazepam
5. bromazepam
6. prazepam
7. temazepam
8. flurazepam
9. clobazam
10. flunitrazepam
11. clonazepam
12. alprazolam
13. triazolam

Column:	Rtx®-200, 15m, 0.32mm ID, 0.25µm (cat.# 15021)
Sample:	1.0µL split injection of benzodiazepines
Conc.:	15ng/component
Oven temp.:	225°C to 325°C @ 8°C/min.
Inj./det. temp.:	250°C/320°C
Carrier gas:	helium
Linear velocity:	35cm/sec. set @ 225°C
FID sensitivity:	5.12 x 10 ⁻¹⁰ AFS
Split ratio:	60:1

Phenothiazines (Basic Drugs) (Underivatized)

Rtx®-5



Separation optimized
using Pro ezGC
software!

1. phenothiazine
2. promethazine
3. trimeprazine
4. promazine
5. chlorprothixene
6. chlorpromazine
7. trifluoperazine
8. acetopromazine
9. prochlorperazine
10. thioridazine

Column:	Rtx®-5, 15m, 0.32mm ID, 0.50µm (cat.# 10236)
Sample:	1.0µL split injection of phenothiazines
Conc.:	2,000ng/µL
Oven temp.:	200°C to 325°C @ 5°C/min.
Inj./det. temp.:	250°C/315°C
Carrier gas:	helium
Linear velocity:	25cm/sec. set @ 200°C
FID sensitivity:	2.56 x 10 ⁻¹⁰ AFS
Split ratio:	30:1