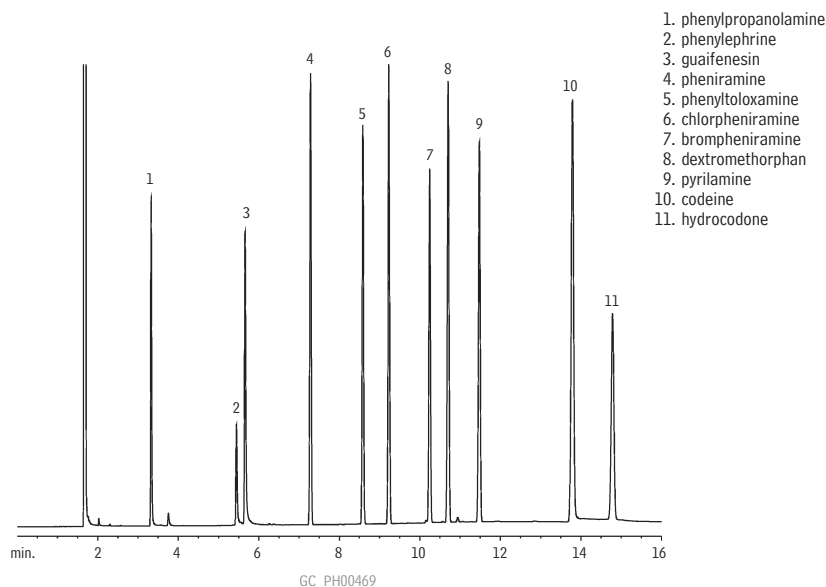


**Cold Medications (Basic Drugs) (Underivatized)**  
**Rtx®-5 Amine**

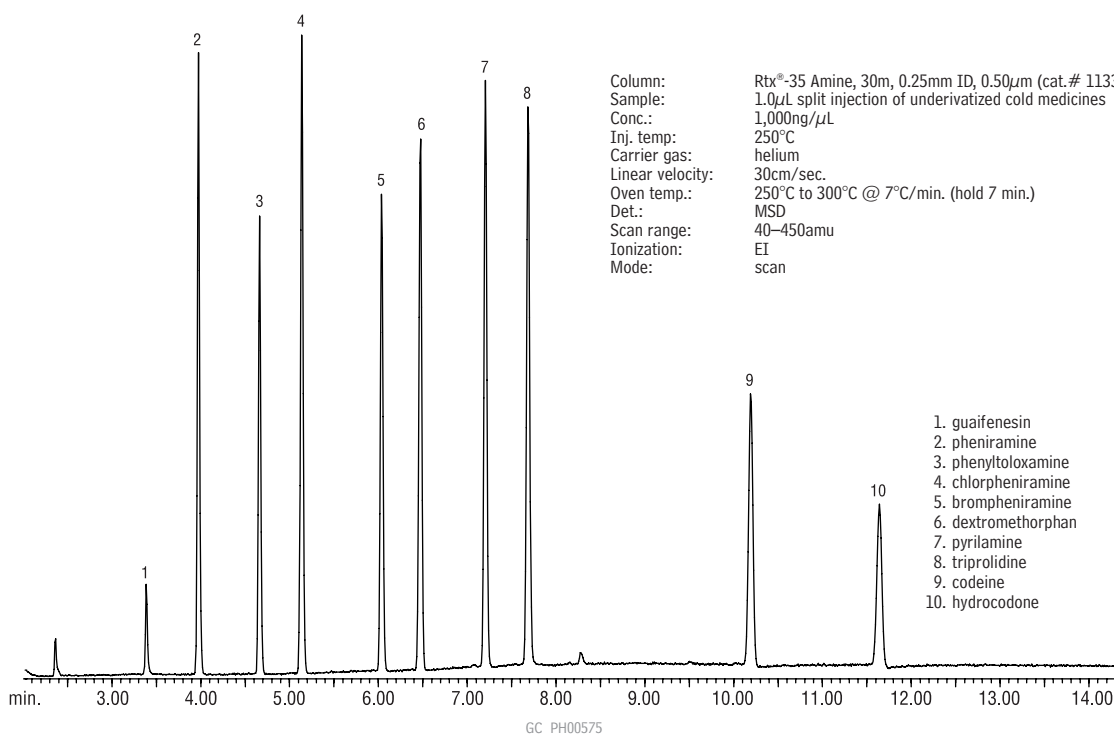


1. phenylpropanolamine
2. phenylephrine
3. guaifenesin
4. pheniramine
5. phenyltoloxamine
6. chlorpheniramine
7. brompheniramine
8. dextromethorphan
9. pyrilamine
10. codeine
11. hydrocodone

Column: Rtx®-5 Amine, 30m, 0.53mm ID, 1.0µm (cat.# 12355)  
 Oven temp.: 175°C to 280°C @ 10°/min. (hold 5.5 min.)  
 Inj./det. temp.: 250°C/280°C  
 Carrier gas: helium  
 Linear velocity: 40cm/sec.  
 Sample size: 1µL  
 Split vent flow: 88mL/min.  
 Split ratio: 20:1



**Cold Medications (Basic Drugs) (Underivatized)**  
**Rtx®-35 Amine**



Column: Rtx®-35 Amine, 30m, 0.25mm ID, 0.50µm (cat.# 11338)  
 Sample: 1.0µL split injection of underivatized cold medicines  
 Conc.: 1,000ng/µL  
 Inj. temp: 250°C  
 Carrier gas: helium  
 Linear velocity: 30cm/sec.  
 Oven temp.: 250°C to 300°C @ 7°C/min. (hold 7 min.)  
 Det.: MSD  
 Scan range: 40–450amu  
 Ionization: EI  
 Mode: scan

1. guaifenesin
2. pheniramine
3. phenyltoloxamine
4. chlorpheniramine
5. brompheniramine
6. dextromethorphan
7. pyrilamine
8. triprolidine
9. codeine
10. hydrocodone