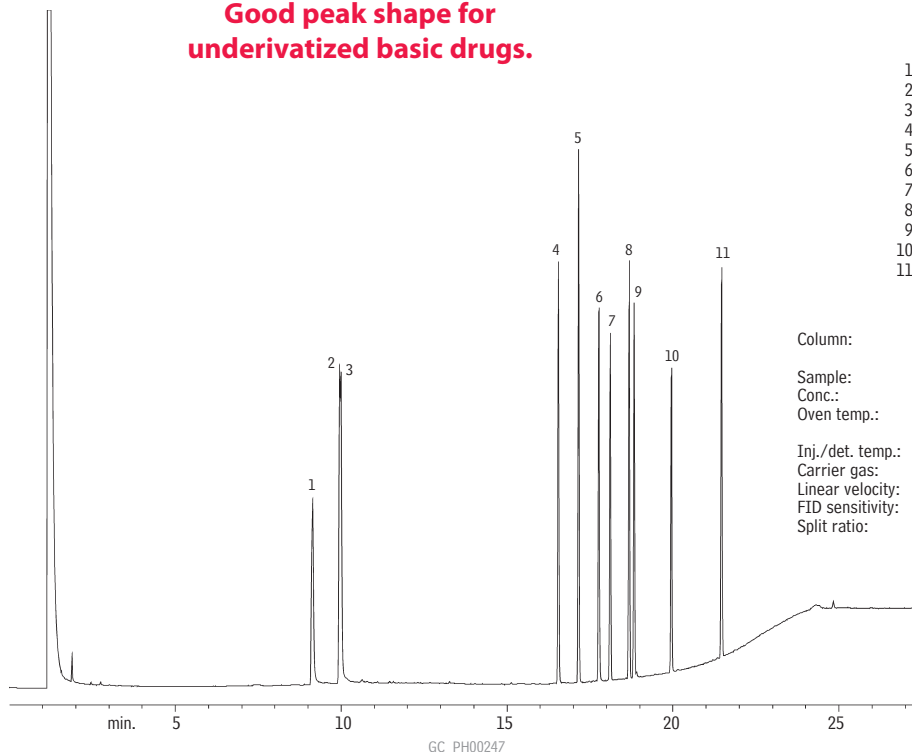


**Underivatized Antihistamines (Basic Drugs)
Rtx®-5 Amine**

**Good peak shape for
underivatized basic drugs.**

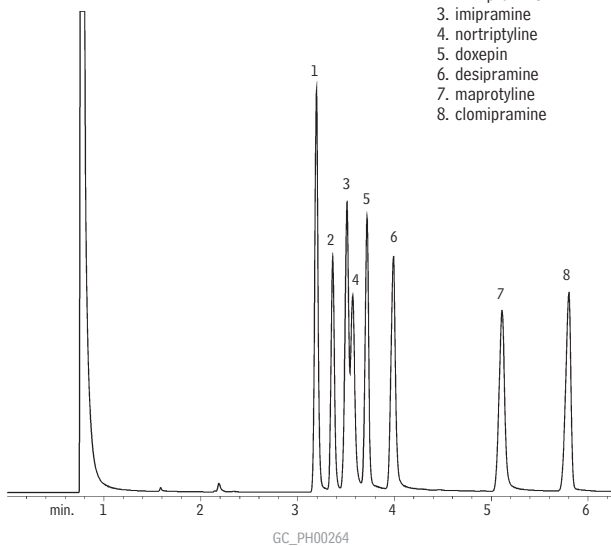


1. phenylpropanolamine
2. ephedrine
3. pseudoephedrine
4. pheniramine
5. diphenhydramine
6. doxylamine
7. phenyltoloxamine
8. methapyrilene
9. chlorpheniramine
10. brompheniramine
11. triprolidine

Column: Rtx®-5 Amine, 30m, 0.32mm ID, 1.0µm (cat.# 12354)
 Sample: 1.0µL split injection of antihistamines
 Conc.: 1,000ng/µL
 Oven temp.: 130°C (hold 5 min.) to 305°C @ 10°C/min. (hold 5 min.)
 Inj./det. temp.: 305°C
 Carrier gas: hydrogen
 Linear velocity: 43cm/sec. set @ 130°C
 FID sensitivity: 6.4 x 10⁻¹² AFS
 Split ratio: 50:1



**Antidepressants (Basic Drugs) (Underivatized)
Rtx®-1701**

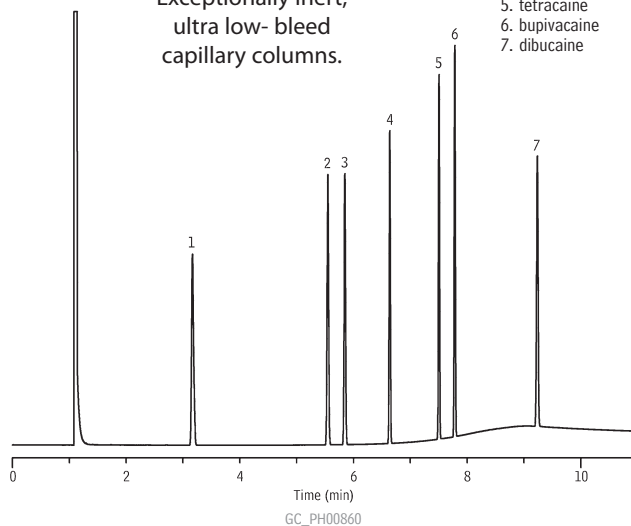


1. amitriptyline
2. trimipramine
3. imipramine
4. nortriptyline
5. doxepin
6. desipramine
7. maprotyline
8. clomipramine

Column: Rtx®-1701, 15m, 0.25mm ID, 0.25µm (cat.# 12020)
 Sample: 1.0µL split injection of antidepressants
 Conc.: 25ng/component
 Oven temp.: 225°C
 Inj./det. temp.: 250°C/260°C
 Carrier gas: helium
 Linear velocity: 30cm/sec. set @ 225°C
 FID sensitivity: 2.56 x 10⁻¹⁰ AFS
 Split ratio: 40:1

**Local Anesthetics
Rxi®-5ms**

Rxi® Technology!
Exceptionally inert,
ultra low- bleed
capillary columns.



1. benzocaine
2. prilocaine
3. lidocaine
4. procaine
5. tetracaine
6. bupivacaine
7. dibucaine

Column: Rxi®-5ms, 30m, 0.53mm ID, 1.00µm (cat.# 13455)
 Sample: 50µg/mL each component in methanol
 Inj.: 1.0µL split (10:1), 4mm split inlet liner with wool (cat.# 20781)
 Inj. temp.: 250°C
 Carrier gas: helium, constant flow
 Flow rate: 5.0mL/min.
 Oven temp.: 200°C (hold 4 min.) to 320°C @ 30°C/min. (hold 3 min.)
 Det.: FID @ 300°C

