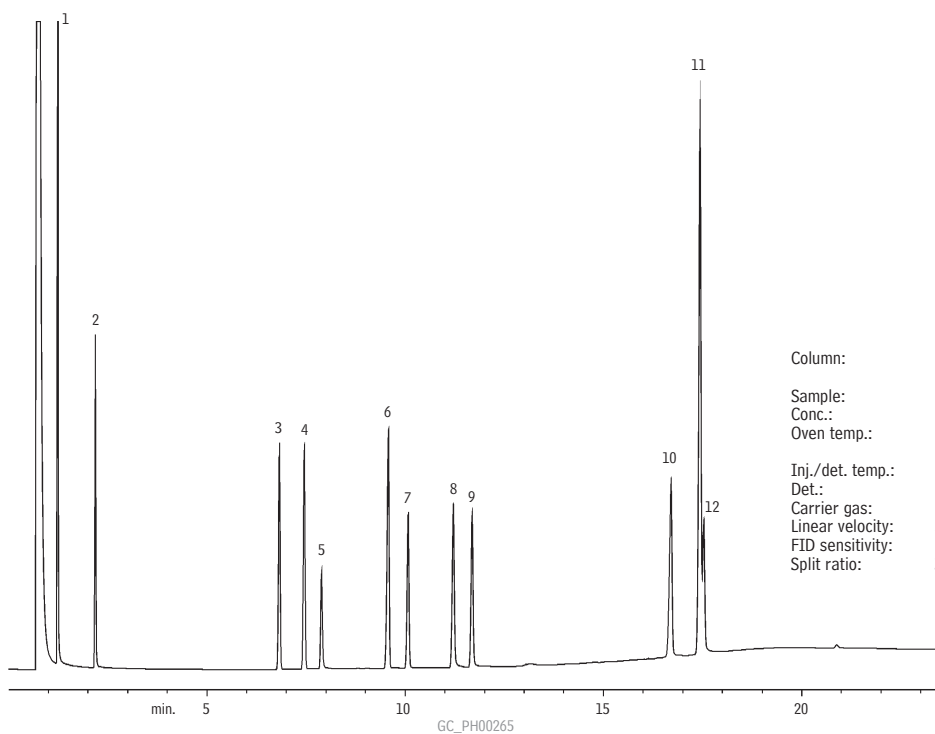


Antiepileptics

Antiepileptics (Underivatized)

Rtx®-20

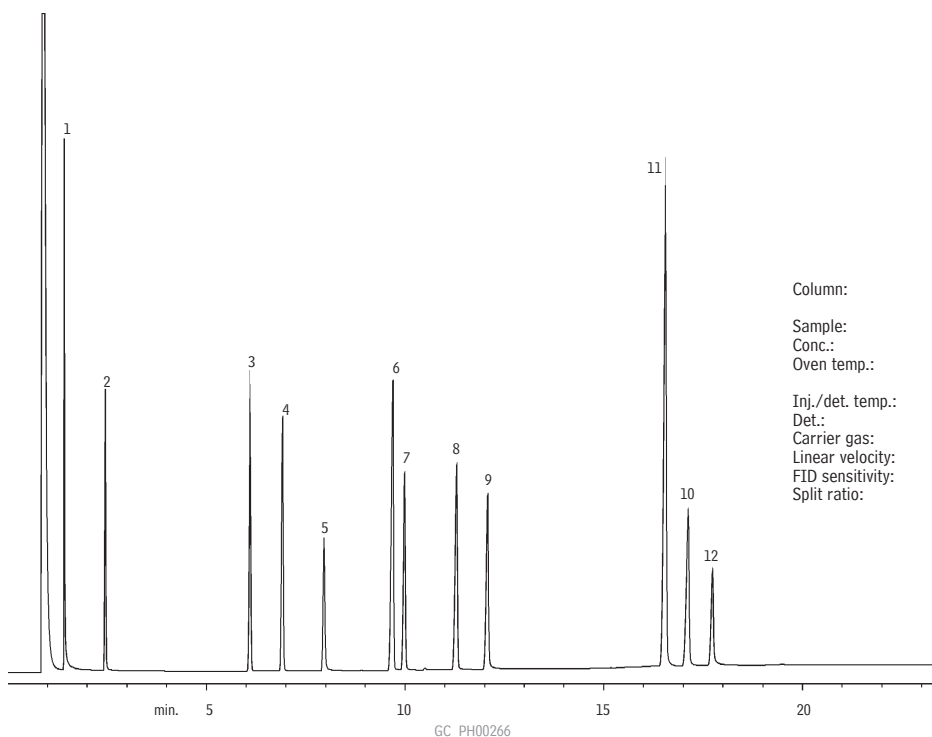


Column: Rtx®-20, 15m, 0.32mm ID, 0.50 μ m (cat.# 10336)
 Sample: 1.0 μ L split injection of antiepileptic drugs
 Conc.: 1,000ng/ μ L
 Oven temp.: 150°C to 280°C @ 7°C/min. (hold 5 min.)
 Inj./det. temp.: 250°C/270°C
 Det.: FID
 Carrier gas: helium
 Linear velocity: 30cm/sec. set @ 150°C
 FID sensitivity: 1.28 x 10¹⁰ AFS
 Split ratio: 30:1

1. valproic acid
2. ethosuximide
3. methsuximide
4. phenuximide
5. desmethyl methsuximide
6. mephentyoin
7. ethotoin
8. PEMA
9. phenobarbital
10. primidone
11. carbamazepine
12. diphenylhydantoin

Antiepileptics (Underivatized)

Rtx®-1701



Column: Rtx®-1701, 15m, 0.32mm ID, 0.50 μ m (cat.# 12036)
 Sample: 1.0 μ L split injection of antiepileptic drugs
 Conc.: 1,000ng/ μ L
 Oven temp.: 150°C to 280°C @ 7°C/min. (hold 5 min.)
 Inj./det. temp.: 250°C/270°C
 Det.: FID
 Carrier gas: helium
 Linear velocity: 30cm/sec. set @ 150°C
 FID sensitivity: 1.28 x 10¹⁰ AFS
 Split ratio: 30:1

1. valproic acid
2. ethosuximide
3. methsuximide
4. phenuximide
5. desmethyl methsuximide
6. mephentyoin
7. ethotoin
8. PEMA
9. phenobarbital
10. primidone
11. carbamazepine
12. diphenylhydantoin