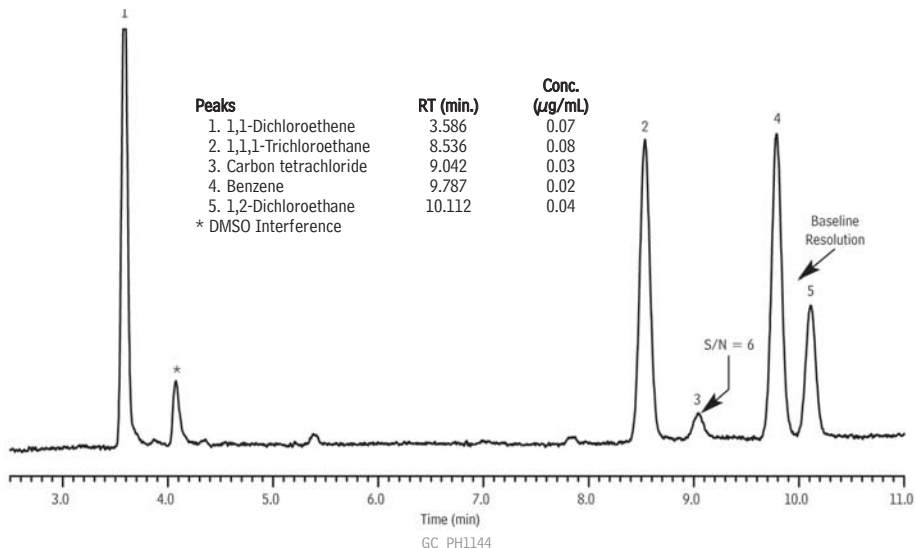




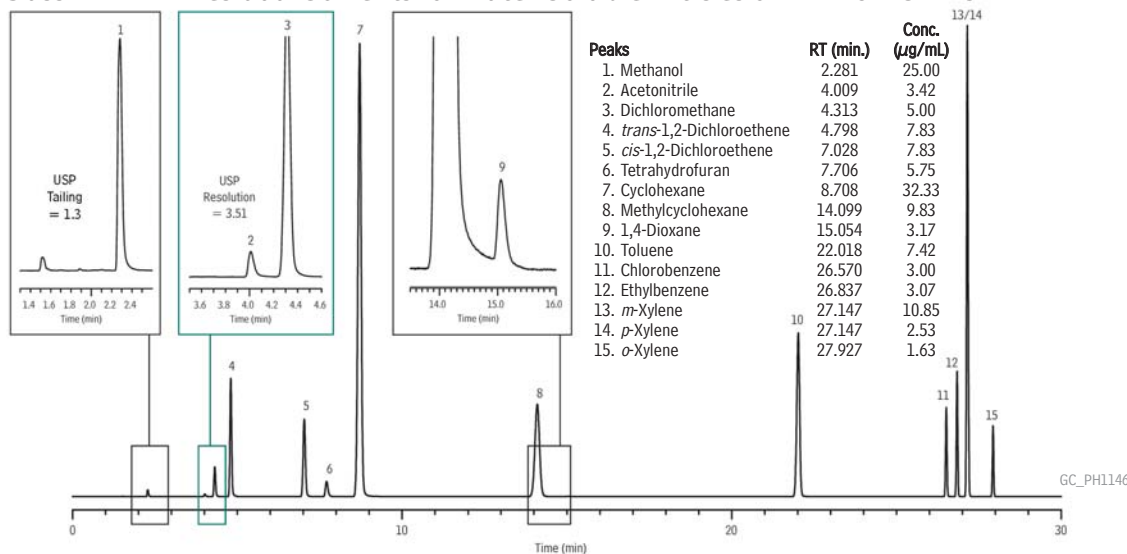
Class 1 Residual Solvents for Water-Soluble Articles on Rxi®-624Sil MS



**Column** Rxi®-624Sil MS, 30 m, 0.32 mm ID, 1.80 µm (cat.# 13870)  
**Sample** Residual Solvents - Class 1 (cat.# 36279)  
**Diluent:** water  
**Injection** headspace-loop split (split ratio 5:1)  
**Liner:** 1mm Split (cat.# 20972)  
**Headspace-Loop**  
 Inj. Port Temp.: 140 °C  
 Instrument: Tekmar HT3  
 Inj. Time: 1 min.  
 Transfer Line Temp.: 110 °C  
 Valve Oven Temp.: 110 °C  
 Sample Temp.: 80 °C  
 Sample Equil. Time: 60 min.  
 Vial Pressure: 10 psi

Pressurize Time: 0.5 min.  
 Pressure  
 Equilibration Time: 0.05 min.  
 Loop Pressure: 5 psi  
 Loop Fill Time: 0.1 min.  
**Oven**  
 Oven Temp: 40 °C (hold 20 min.) to 240 °C at 10 °C/min. (hold 20 min.)  
**Carrier Gas**  
 He, constant flow  
 Linear Velocity: 35 cm/sec.  
 Dead Time: 1.45 min. @ 40 °C  
**Detector**  
 FID @ 250 °C  
 Data Rate: 5 Hz  
**Instrument**  
 Agilent/HP6890 GC  
**Acknowledgement**  
 Teledyne Tekmar

Class 2 - Mix A Residual Solvents for Water-Soluble Articles on Rxi®-624Sil MS



**Column** Rxi®-624Sil MS, 30 m, 0.32 mm ID, 1.80 µm (cat.# 13870)  
**Sample** Residual Solvents Class 2 - Mix A (cat.# 36271)  
**Diluent:** water  
**Injection** headspace-loop split (split ratio 5:1)  
**Liner:** 1mm Split (cat.# 20972)  
**Headspace-Loop**  
 Inj. Port Temp.: 140 °C  
 Instrument: Tekmar HT3  
 Inj. Time: 1 min.  
 Transfer Line Temp.: 110 °C  
 Valve Oven Temp.: 110 °C  
 Sample Temp.: 80 °C  
 Sample Equil. Time: 60 min.  
 Vial Pressure: 10 psi

Pressurize Time: 0.5 min.  
 Pressure  
 Equilibration Time: 0.05 min.  
 Loop Pressure: 5 psi  
 Loop Fill Time: 0.1 min.  
**Oven**  
 Oven Temp: 40 °C (hold 20 min.) to 240 °C at 10 °C/min. (hold 20 min.)  
**Carrier Gas**  
 He, constant flow  
 Linear Velocity: 35 cm/sec.  
 Dead Time: 1.45 min. @ 40 °C  
**Detector**  
 FID @ 250 °C  
 Data Rate: 5 Hz  
**Instrument**  
 Agilent/HP6890 GC  
**Acknowledgement**  
 Teledyne Tekmar