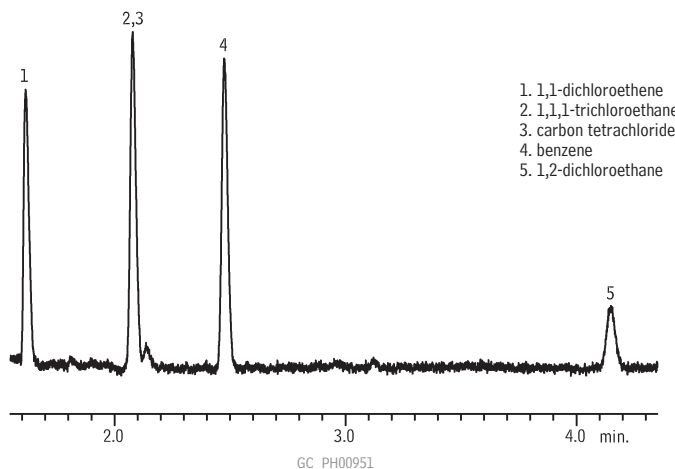


Residual Solvents Class 1
Stabilwax® (G16)



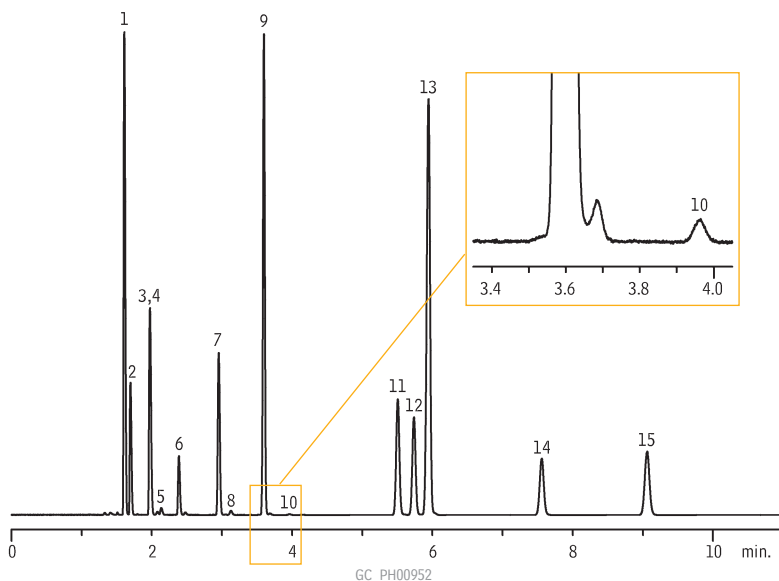
- 1. 1,1-dichloroethene
- 2. 1,1,1-trichloroethane
- 3. carbon tetrachloride
- 4. benzene
- 5. 1,2-dichloroethane

Column: Stabilwax®, 30m, 0.32mm ID, 0.25µm (cat.# 10624)
 Sample: USP Stock Mixture USP <467> Residual Solvents Class 1 Mix (cat.# 36279) in 20mL headspace vial (cat.# 24685), water diluent
 Inj.: headspace injection (split ratio 1:5), 2mm splitless liner IP deactivated (cat.# 20712)
 Inj. temp.: 140°C
 Carrier gas: helium, constant flow
 Flow rate: 2.15mL/min., 35.2cm/sec.
 Oven temp.: 50°C for 20 min. to 165°C @ 6°C/min. (hold for 20 min.)
 Det.: FID @ 250°C

Headspace Conditions
 Instrument: Overbrook Scientific HT200H
 Syringe temp.: 100°C
 Sample temp.: 80°C
 Sample equil. time.: 45 min.
 Injection vol.: 1.0mL
 Injection speed: setting 8
 Injection dwell: 5 sec.



Residual Solvents Class 2 Mix A
Stabilwax® (G16)



- 1. cyclohexane
- 2. methylcyclohexane
- 3. *trans*-1,2-dichloroethene
- 4. tetrahydrofuran
- 5. methanol
- 6. dichloromethane
- 7. *cis*-1,2-dichloroethene
- 8. acetonitrile
- 9. toluene
- 10. 1,4-dioxane
- 11. ethyl benzene
- 12. *p*-xylene
- 13. *m*-xylene
- 14. *o*-xylene
- 15. chlorobenzene

Column: Stabilwax®, 30m, 0.32mm ID, 0.25µm (cat.# 10624)
 Sample: USP Stock Standard Residual Solvents Class 2 Mix A (cat.# 36271) in 20mL headspace vial (cat.# 24685), water diluent
 Inj.: headspace injection (split ratio 1:5), 2mm splitless liner IP deactivated (cat.# 20712)
 Inj. temp.: 140°C
 Carrier gas: helium, constant flow
 Flow rate: 2.15mL/min., 35.2cm/sec.
 Oven temp.: 50°C for 20 min. to 165°C @ 6°C/min. (hold for 20 min.)
 Det.: FID @ 250°C

Headspace Conditions
 Instrument: Overbrook Scientific HT200H
 Syringe temp.: 100°C
 Sample temp.: 80°C
 Sample equil. time.: 45 min.
 Injection vol.: 1.0mL
 Injection speed: setting 8
 Injection dwell: 5 sec.