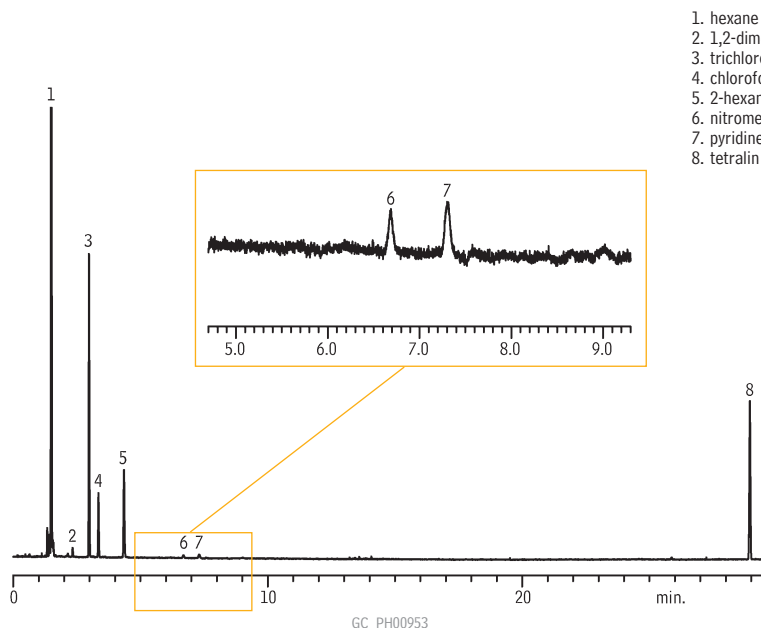


Residual Solvents Class 2 Mix B
Stabilwax® (G16)



1. hexane
2. 1,2-dimethoxyethane
3. trichloroethylene
4. chloroform
5. 2-hexanone
6. nitromethane
7. pyridine
8. tetralin

Column: Stabilwax®, 30m, 0.32mm ID, 0.25µm (cat.# 10624)
Sample: USP Stock Standard Residual Solvents Class 2 Mix B (cat.# 36272) in 20mL headspace vial (cat.# 24685), water diluent
Inj.: headspace injection (split ratio 1:5), 2mm splitless liner IP deactivated (cat.# 20712)
Inj. temp.: 140°C
Carrier gas: helium, constant flow
Flow rate: 2.15mL/min., 35.2cm/sec.
Oven temp.: 50°C for 20 min. to 165°C @ 6°C/min. (hold for 20 min.)
Det.: FID @ 250°C

Headspace Conditions
Instrument: Overbrook Scientific HT200H
Syringe temp.: 100°C
Sample temp.: 80°C
Sample equil. time.: 45 min.
Injection vol.: 1.0mL
Injection speed: setting 8
Injection dwell: 5 sec.

At Risk for Melamine

Meet new FDA guidance for melamine contamination in at-risk pharmaceutical components.



Melamine Analysis Kit.....cat. # 33254 (see page 535)

Detect melamine and related compounds by GC/MS with a complete analysis kit. Consistent with FDA procedure and new guidance for at-risk pharmaceutical components.

Kit includes (also sold individually):

- **Rxi®-5Sil MS with 5 meter Integra Guard® Column**
- **Standards**
- **Derivatization Reagent**
- **Accessory Tubes and Syringe Filters**
- **Easy-to-Follow Instructions** with procedural check list to simplify laboratory documentation!

Keep up with advances in melamine analysis at www.restek.com/melamine