

Polyunsaturated FAME Analysis

FAMEWAX Columns (fused silica)

(polar phase; Crossbond® polyethylene glycol)

- Application-specific columns for FAMES, specially tested with a FAME mixture.
- Temperature range: 20 °C to 250 °C.

The elution order of polyunsaturated FAMES on FAMEWAX columns is comparable to that on other Carbowax® columns, but baseline resolution is achieved in significantly less time.

similar phase

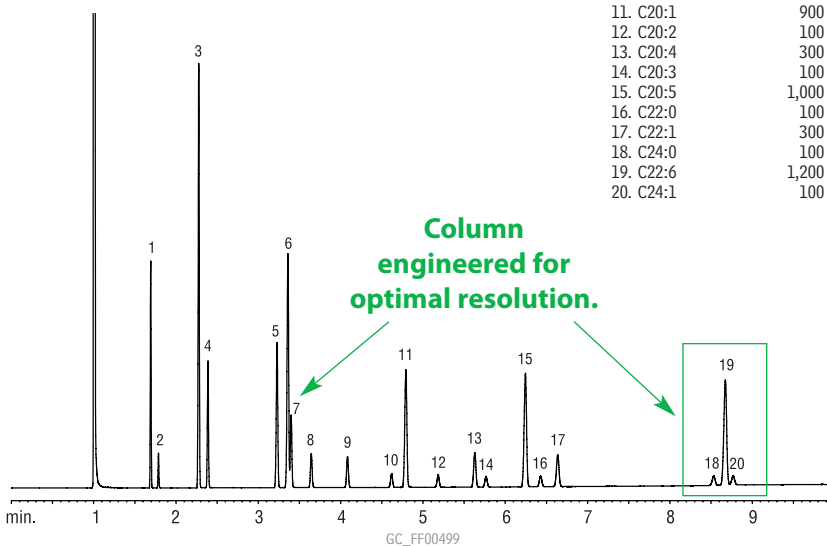
Omegawax

ID	df	temp. limits	30-Meter
0.25mm	0.25µm	20 to 250°C	12497
0.32mm	0.25µm	20 to 250°C	12498
0.53mm	0.50µm	20 to 250°C	12499

FAMES (marine oil standard) on a FAMEWAX column.

Column: FAMEWAX, 30m, 0.32mm ID, 0.25µm (cat.# 12498)
 Inj.: 1µL
 Conc.: 10,000µg/mL in isooctane
 (total FAMES; see breakdown in peak list)
 Oven temp.: 195–240°C at 5°C/min., 1 min. hold
 Inj./det. temp.: 250°C/275°C
 Carrier gas: hydrogen
 Flow rate: 3mL/min. (constant flow)
 Split ratio: 100:1

Peak List	Conc. (µg/mL)
1. C14:0	600
2. C14:1	100
3. C16:0	1,600
4. C16:1	500
5. C18:0	800
6. C18:1 (oleate)	1,300
7. C18:1 (vaccenate)	400
8. C18:2	200
9. C18:3	200
10. C20:0	100
11. C20:1	900
12. C20:2	100
13. C20:4	300
14. C20:3	100
15. C20:5	1,000
16. C22:0	100
17. C22:1	300
18. C24:0	100
19. C22:6	1,200
20. C24:1	100



Chromatogram Search Tool

Search by compound name, synonym,
CAS # or keyword

www.restek.com/chromatograms



Catch the Buzz

Sign up for Restek's e-newsletter, *The Buzz*
www.restek.com/buzz