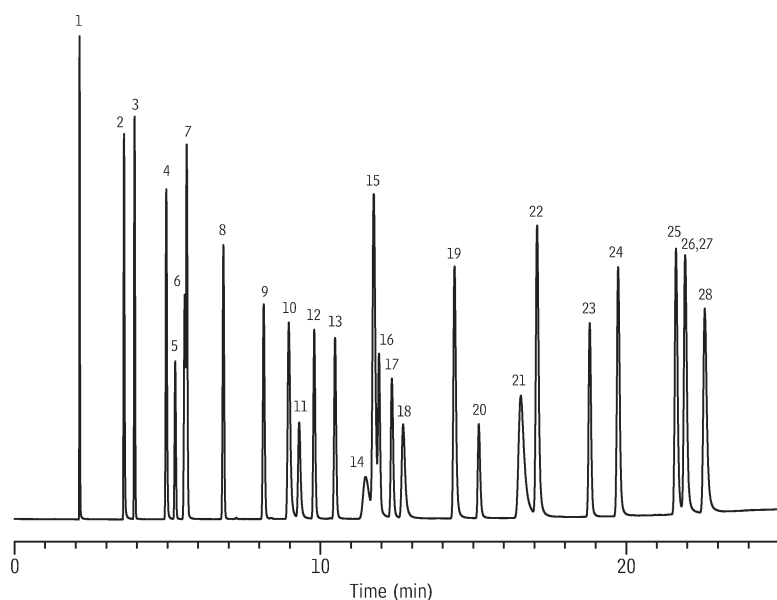


Solvent Mixture

Rt®-Q-BOND

(PLOT)

NEW!



GC_PC01082

- | | |
|---------------------------------------|-------------------------|
| 1. methanol | 15. benzene |
| 2. ethanol | 16. 1,2-dimethoxyethane |
| 3. acetonitrile | 17. trichloroethylene |
| 4. acetone | 18. 1,4-dioxane |
| 5. dichloromethane | 19. pyridine |
| 6. 1,1-dichloroethene | 20. dimethylformamide |
| 7. nitromethane | 21. methylcyclohexane |
| 8. <i>trans</i> -1,2-dichloroethylene | 22. toluene |
| 9. <i>cis</i> -1,2-dichloroethylene | 23. 2-hexanone |
| 10. tetrahydrofuran | 24. chlorobenzene |
| 11. chloroform | 25. ethylbenzene |
| 12. ethyl acetate | 26. <i>m</i> -xylene |
| 13. 1,2-dichloroethane | 27. <i>p</i> -xylene |
| 14. 1,1,1-trichloroethane | 28. <i>o</i> -xylene |

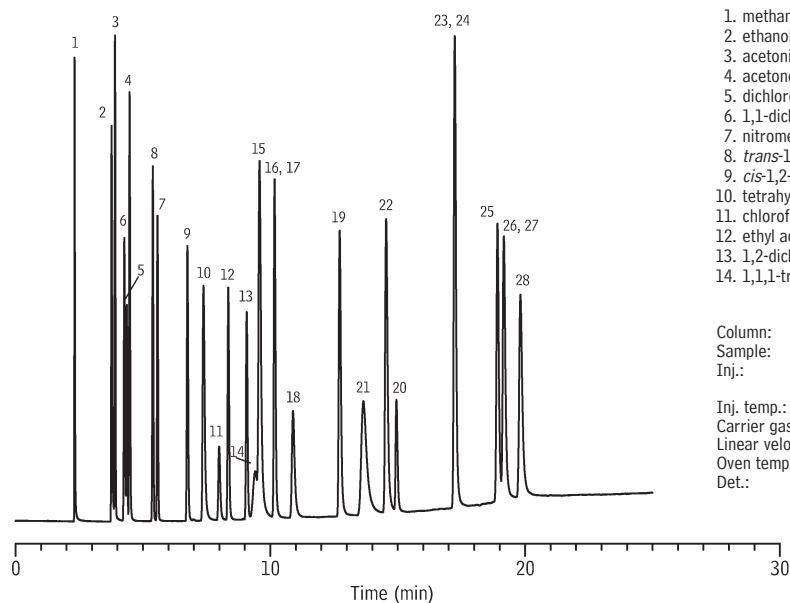
Column: Rt®-Q-BOND, 30m, 0.53mm ID, 20 μ m (cat.# 19742)
 Sample: solvent mixture
 Inj.: 1.0 μ L, split (split vent flow 100mL/min.),
 4mm single gooseneck liner (cat.# 20798)
 Inj. temp.: 200°C
 Carrier gas: hydrogen, constant pressure, 4.2psi
 Linear velocity: 40cm/sec. @ 120°C
 Oven temp.: 120°C to 240°C @ 5°C/min. (hold 5.0 min.)
 Det.: FID @ 240°C

Solvent Mixture

Rt®-S-BOND

(PLOT)

NEW!



GC_PC01080

- | | |
|---------------------------------------|-------------------------|
| 1. methanol | 15. benzene |
| 2. ethanol | 16. 1,2-dimethoxyethane |
| 3. acetonitrile | 17. trichloroethylene |
| 4. acetone | 18. 1,4-dioxane |
| 5. dichloromethane | 19. pyridine |
| 6. 1,1-dichloroethene | 20. dimethylformamide |
| 7. nitromethane | 21. methylcyclohexane |
| 8. <i>trans</i> -1,2-dichloroethylene | 22. toluene |
| 9. <i>cis</i> -1,2-dichloroethylene | 23. 2-hexanone |
| 10. tetrahydrofuran | 24. chlorobenzene |
| 11. chloroform | 25. ethylbenzene |
| 12. ethyl acetate | 26. <i>m</i> -xylene |
| 13. 1,2-dichloroethane | 27. <i>p</i> -xylene |
| 14. 1,1,1-trichloroethane | 28. <i>o</i> -xylene |

Column: Rt®-S-BOND, 30m, 0.53mm ID, 20 μ m (cat.# 19746)
 Sample: solvent mixture
 Inj.: 1.0 μ L, split (split vent flow 100mL/min.),
 4mm single gooseneck liner (cat.# 20798)
 Inj. temp.: 200°C
 Carrier gas: hydrogen, constant pressure, 4.2psi
 Linear velocity: 40cm/sec. @ 120°C
 Oven temp.: 120°C to 220°C @ 5°C/min. (hold 5.0 min.)
 Det.: FID @ 220°C