

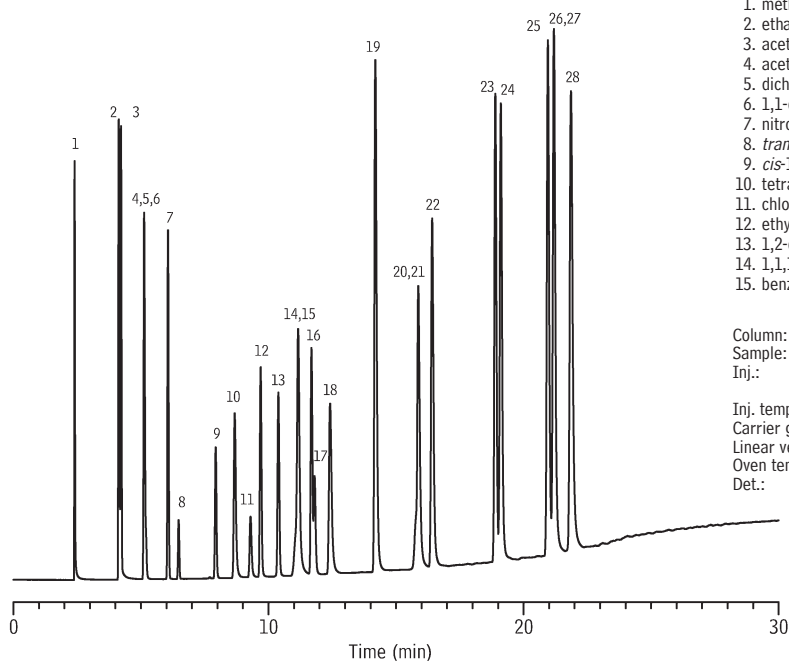
Solvents

Solvent Mixture

Rt®-QS-BOND

(PLOT)

NEW!



- | | |
|---------------------------------------|-------------------------|
| 1. methanol | 16. 1,2-dimethoxyethane |
| 2. ethanol | 17. trichloroethylene |
| 3. acetonitrile | 18. 1,4-dioxane |
| 4. acetone | 19. pyridine |
| 5. dichloromethane | 20. dimethylformamide |
| 6. 1,1-dichloroethene | 21. methylcyclohexane |
| 7. nitromethane | 22. toluene |
| 8. <i>trans</i> -1,2-dichloroethylene | 23. 2-hexanone |
| 9. <i>cis</i> -1,2-dichloroethylene | 24. chlorobenzene |
| 10. tetrahydrofuran | 25. ethylbenzene |
| 11. chloroform | 26. <i>m</i> -xylene |
| 12. ethyl acetate | 27. <i>p</i> -xylene |
| 13. 1,2-dichloroethane | 28. <i>o</i> -xylene |
| 14. 1,1,1-trichloroethane | |
| 15. benzene | |

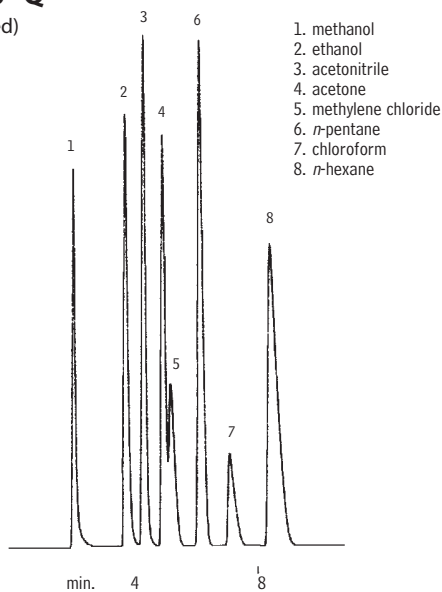
Column: Rt®-QS-BOND, 30m, 0.53mm ID, 20 μ m (cat.# 19738)
 Sample: solvent mixture
 Inj.: 1.0 μ L, split (split vent flow 100mL/min.),
 4mm single gooseneck liner (cat.# 20798)
 Inj. temp.: 200°C
 Carrier gas: hydrogen, constant pressure, 4.2psi
 Linear velocity: 40cm/sec. @ 120°C
 Oven temp.: 120°C to 240°C @ 5°C/min. (hold 5.0 min.)
 Det.: FID @ 240°C

GC_PC01081

Solvents

HayeSep® Q

(micropacked)



- | |
|-----------------------|
| 1. methanol |
| 2. ethanol |
| 3. acetonitrile |
| 4. acetone |
| 5. methylene chloride |
| 6. <i>n</i> -pentane |
| 7. chloroform |
| 8. <i>n</i> -hexane |

GC_CH00328

Column: HayeSep® Q, 2m, 1mm ID (cat.# 19017)
 Sample: 1 μ L direct injection of a neat solvent mixture
 Oven temp.: 80°C to 180°C @
 16°C/min. (hold 5 min.)
 Inj./det. temp.: 200°C
 Carrier gas: helium
 Flow: 20mL/min. set @ 40°C
 FID sensitivity: 512 x 10⁻¹¹ AFS

Chromatogram
Search Tool

Search by compound name, synonym,
CAS # or keyword

www.restek.com/chromatograms

