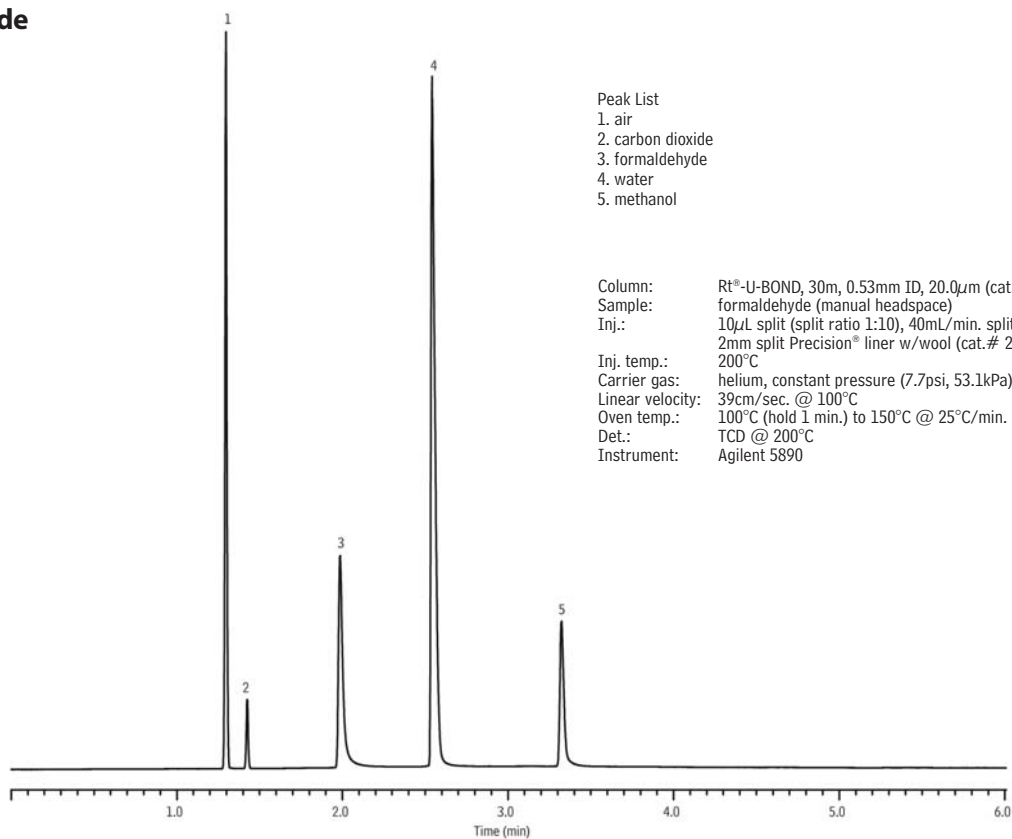


## Formaldehyde

## Rt®-U-BOND

(PLOT)



## Peak List

1. air
2. carbon dioxide
3. formaldehyde
4. water
5. methanol

Column: Rt®-U-BOND, 30m, 0.53mm ID, 20.0 $\mu$ m (cat.# 19750)  
 Sample: formaldehyde (manual headspace)  
 Inj.: 10 $\mu$ L split (split ratio 1:10), 40mL/min. split vent flow rate  
 2mm split Precision® liner w/wool (cat.# 20823)  
 Inj. temp.: 200°C  
 Carrier gas: helium, constant pressure (7.7psi, 53.1kPa)  
 Linear velocity: 39cm/sec. @ 100°C  
 Oven temp.: 100°C (hold 1 min.) to 150°C @ 25°C/min. (hold 3 min.)  
 Det.: TCD @ 200°C  
 Instrument: Agilent 5890

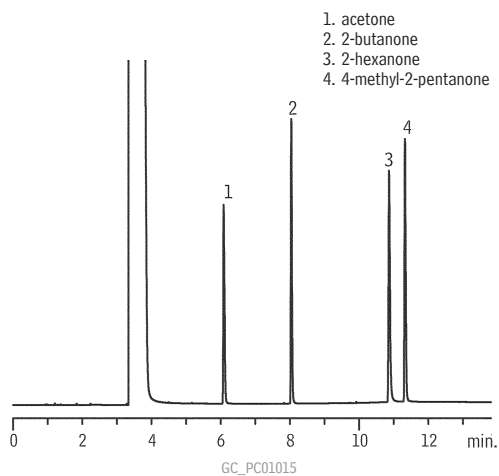
NEW!

GC\_CH01137

## Ketones

## Rt®-QS-BOND

(PLOT)

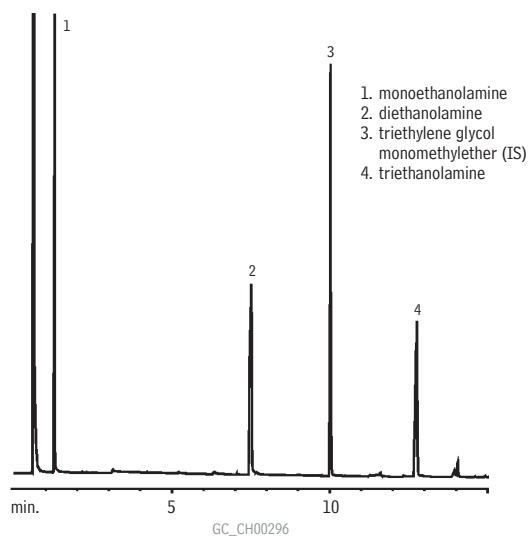


1. acetone
2. 2-butanone
3. 2-hexanone
4. 4-methyl-2-pentanone

Column: Rt®-QS-BOND, 30m, 0.53mm ID (cat.# 19738)  
 Sample: 1,000 $\mu$ g/mL VOA Calibration Mix #1 (ketones)  
 (cat.# 30006) in methanol:water, 90:10 (v/v)  
 Inj.: 1 $\mu$ L split (split ratio 50:1), 4mm Siltek® single  
 gooseneck liner (cat.# 20798-214.1)  
 Inj. temp.: 240°C  
 Carrier gas: helium, constant flow  
 Flow rate: 5.7mL/min. @ 40°C  
 Oven temp.: 60°C to 225°C @ 15°C/min. (hold 10 min.)  
 Det.: FID @ 240°C

## Ethanolamines

## Rtx®-5 Amine



1. monoethanolamine
2. diethanolamine
3. triethylene glycol  
monomethylether (IS)
4. triethanolamine

Column: Rtx®-5 Amine, 15m, 0.25mm ID, 0.50 $\mu$ m (cat.# 12335)  
 Sample: 1.0 $\mu$ L split injection of ethanolamine mix in methanol  
 On-column conc.: 34ng  
 Oven temp.: 50°C (hold 2 min.) to 180°C @  
 10°C/min. (hold 2 min.)  
 Inj./det. temp.: 280°C/300°C  
 Carrier gas: hydrogen  
 Linear velocity: 43cm/sec. set @ 50°C  
 FID sensitivity: 6.4 x 10<sup>11</sup> AFS  
 Split ratio: 58:1

RESTEK

CHROMALYTIC +61(0)3 9762 2034  
 ECHnology Pty Ltd

Australian Distributors  
 Importers & Manufacturers  
 www.chromtech.net.au

11/12

www.restek.com 703