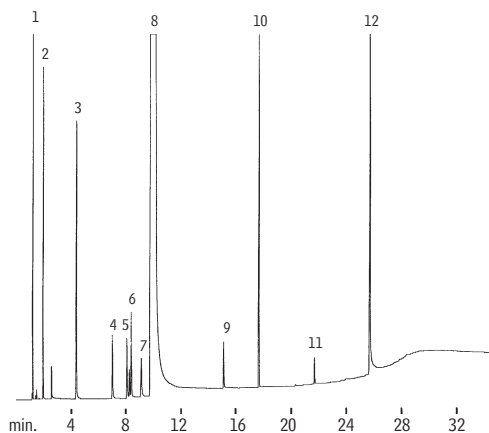


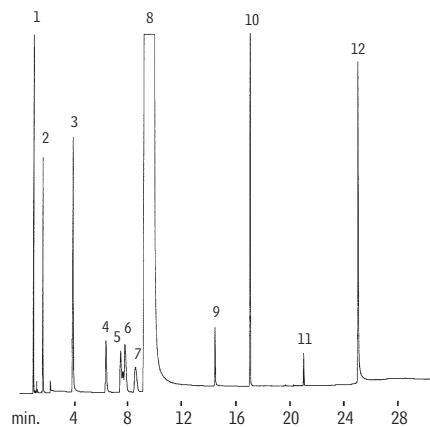
Hexamethylenediamine (HMD)

Stabilwax®-DB



GC_CH00302

1. cyclohexane
2. hexamethyleimine
3. 1,4-diaminobutane
4. pentamethylenediamine
5. 1,2-diaminocyclohexane
6. 1,5-diamino-2-methylpentane
7. aminomethylcyclopentylamine
8. hexamethylenediamine
9. 6-aminocapronitrile
10. *n*-valeramide
11. adiponitrile
12. bis-hexamethylenetriamine



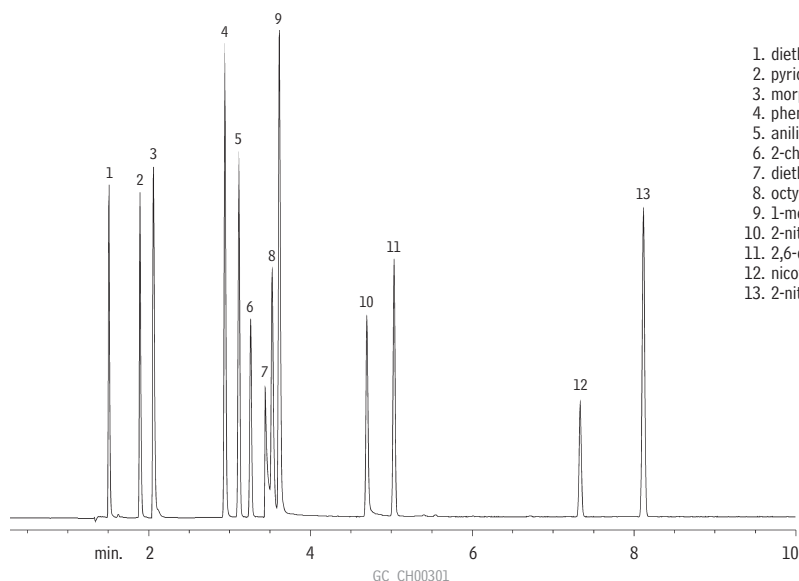
GC_CH00303

Column: Stabilwax®-DB, 30m, 0.32mm ID, 0.25 μ m (cat.# 10824)
 Sample: 0.4 μ L direct injection of a neat hexamethylenediamine (HMD) sample
 On-column conc.: 10 to 1,000ng/component
 Oven temp.: 95°C (hold 6 min.) to 235°C @ 7°C/min. (hold 4 min.)
 Inj./det. temp.: 250°C
 Carrier gas: hydrogen
 Linear velocity: 40cm/sec.
 FID sensitivity: 2 x 10⁻¹¹ AFS

Column: Stabilwax®-DB, 30m, 0.53mm ID, 0.5 μ m (cat.# 10840)
 Sample: 0.2 μ L direct injection of a neat hexamethylenediamine sample onto a Uniliner® inlet liner
 Oven temp.: 95°C (hold 6 min.) to 235°C @ 7°C/min. (hold 2 min.)
 Inj./det. temp.: 255°C
 Carrier gas: hydrogen
 Linear velocity: 40cm/sec. (flow rate: 5cc/min.)
 FID sensitivity: 64 x 10⁻¹¹ AFS

Amines & Phenols

Rtx®-5 Amine



GC_CH00301

1. diethylamine
2. pyridine
3. morpholine
4. phenol
5. aniline
6. 2-chlorophenol
7. diethylenetriamine
8. octylamine
9. 1-methyl-2-pyrrolidinone
10. 2-nitrophenol
11. 2,6-dimethylaniline
12. nicotine
13. 2-nitroaniline

Column: Rtx®-5 Amine, 30m, 0.32mm ID, 1.0 μ m (cat.# 12354)
 Sample: 1.0 μ L split injection of amines and phenols in water
 On-column conc.: 22ng
 Oven temp.: 120°C to 220°C @ 10°C/min.
 Inj./det. temp.: 305°C
 Carrier gas: hydrogen
 Linear velocity: 38cm/sec. set @ 120°C
 FID sensitivity: 6.4 x 10⁻¹¹ AFS
 Split ratio: 25:1