

Explosives
EPA Method 8330B
Ultra II® Aromax

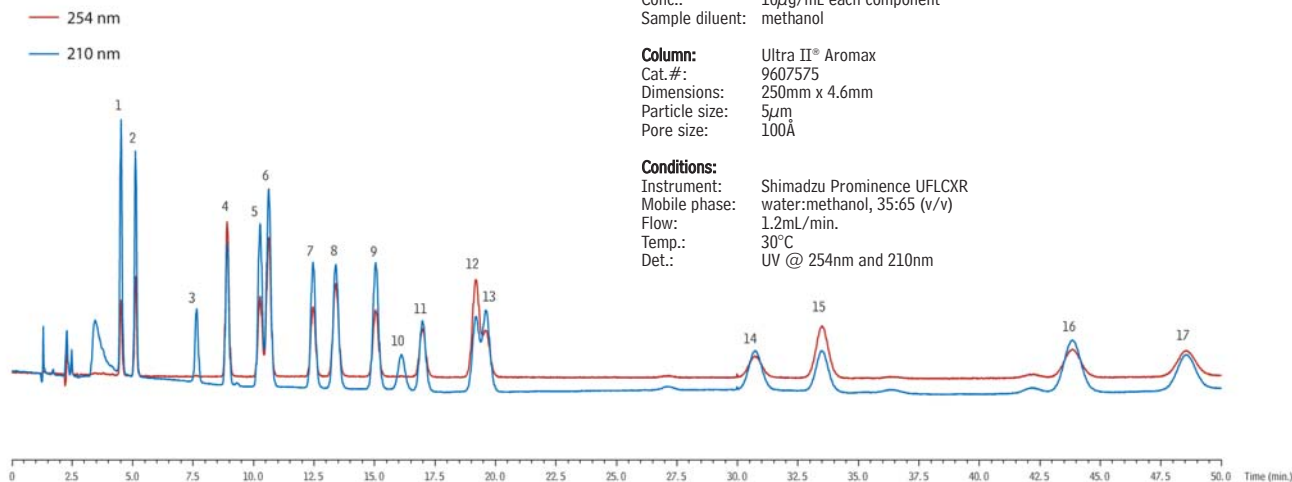


- | | |
|-------------------------------|---------------------------|
| 1. HMX | 10. PETN |
| 2. RDX | 11. 4-nitrotoluene |
| 3. nitroglycerin | 12. 1,3-dinitrobenzene |
| 4. nitrobenzene | 13. 2,6-dinitrotoluene |
| 5. 4-amino-2,6-dinitrotoluene | 14. tetryl |
| 6. 3,5-dinitroaniline | 15. 2,4-dinitrotoluene |
| 7. 2-nitrotoluene | 16. 1,3,5-trinitrobenzene |
| 8. 2-amino-4,6-dinitrotoluene | 17. 2,4,6-trinitrotoluene |
| 9. 3-nitrotoluene | |

Sample: Nitroaromatics and Nitramine Explosives by HPLC, EPA 8330B (cat.# 33204)
Inj.: 10µL
Conc.: 10µg/mL each component
Sample diluent: methanol

Column: Ultra II® Aromax
Cat.#: 9607575
Dimensions: 250mm x 4.6mm
Particle size: 5µm
Pore size: 100Å

Conditions:
Instrument: Shimadzu Prominence UFLCXR
Mobile phase: water:methanol, 35:65 (v/v)
Flow: 1.2mL/min.
Temp.: 30°C
Det.: UV @ 254nm and 210nm



LC_EV0484

Explosives
EPA Method 8330B
Ultra C8

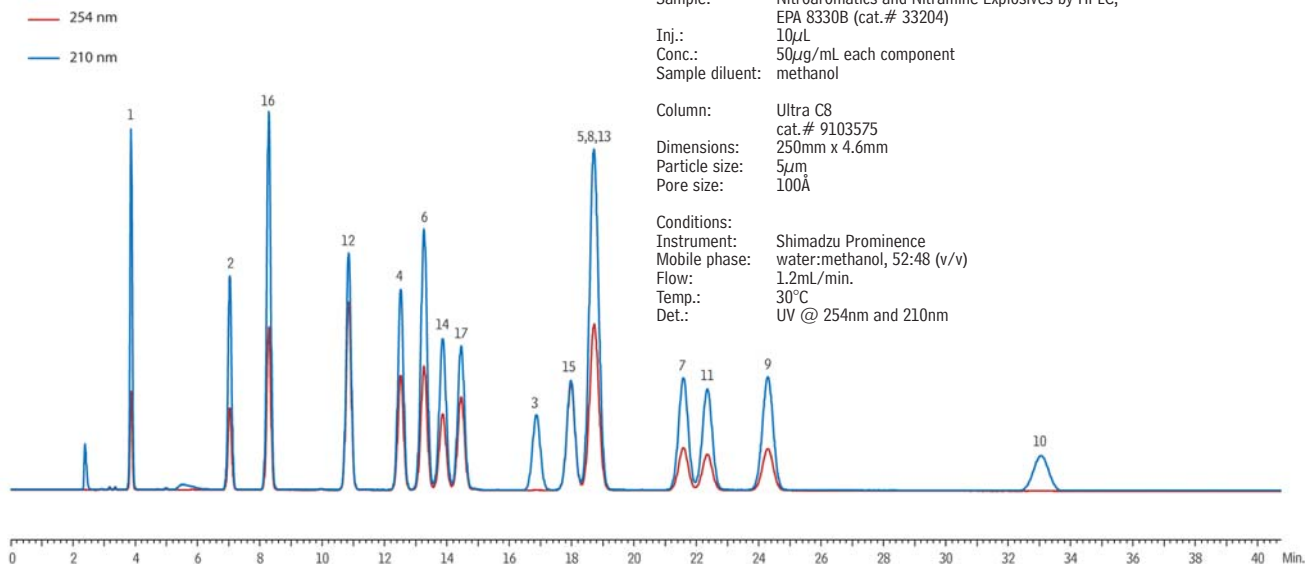


- | | |
|-------------------------------|---------------------------|
| 1. HMX | 10. PETN |
| 2. RDX | 11. 4-nitrotoluene |
| 3. nitroglycerin | 12. 1,3-dinitrobenzene |
| 4. nitrobenzene | 13. 2,6-dinitrotoluene |
| 5. 4-amino-2,6-dinitrotoluene | 14. tetryl |
| 6. 3,5-dinitroaniline | 15. 2,4-dinitrotoluene |
| 7. 2-nitrotoluene | 16. 1,3,5-trinitrobenzene |
| 8. 2-amino-4,6-dinitrotoluene | 17. 2,4,6-trinitrotoluene |
| 9. 3-nitrotoluene | |

Sample: Nitroaromatics and Nitramine Explosives by HPLC, EPA 8330B (cat.# 33204)
Inj.: 10µL
Conc.: 50µg/mL each component
Sample diluent: methanol

Column: Ultra C8
cat.# 9103575
Dimensions: 250mm x 4.6mm
Particle size: 5µm
Pore size: 100Å

Conditions:
Instrument: Shimadzu Prominence
Mobile phase: water:methanol, 52:48 (v/v)
Flow: 1.2mL/min.
Temp.: 30°C
Det.: UV @ 254nm and 210nm



LC_EV0485