

NEW!

Pesticides on Pinnacle® DB Aqueous C18 (LC/MS/MS, ESI-)

Peak List:	Compound	Polarity	Mol. Wt.	RT (min.)	Transition 1
	bentazone	negative	240.28	0.77	239.0 → 131.8
	bromoxynil	negative	276.91	1.32	275.9 → 80.8
	Ioxynil	negative	370.92	2.46	369.8 → 126.7
	fludioxinil	negative	248.19	5.34	247.0 → 179.9
	boscalid	negative	343.21	5.36	343.0 → 307
	prothioconazole	negative	344.26	5.41	341.9 → 305.8
	fipronil	negative	437.15	5.56	434.9 → 329.8
	noviflumuron	negative	529.1	7.08	527.1 → 343.8

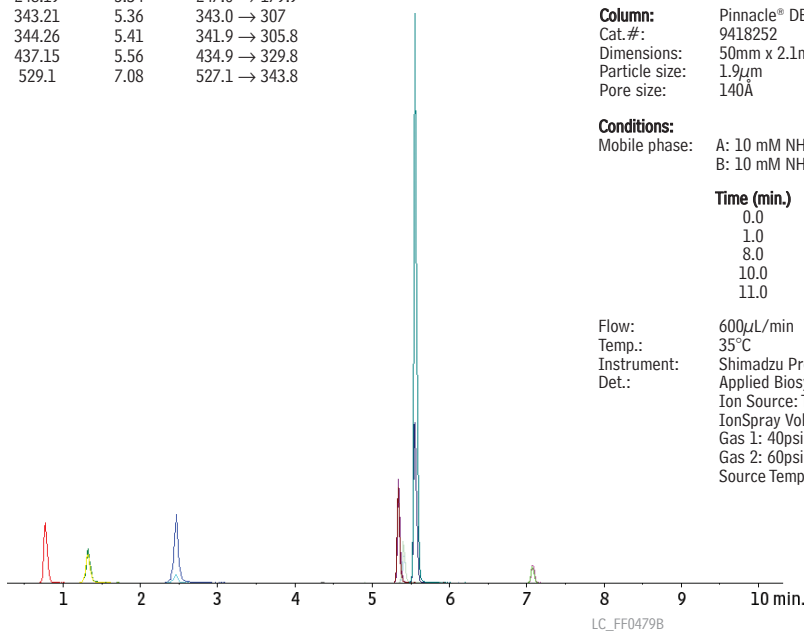
Sample: multicomponent pesticide standard
 Inj.: 5µL
 Conc.: 33.3ppb each pesticide
 Sample diluent: acetonitrile

Column: Pinnacle® DB Aqueous C18
 Cat.#: 9418252
 Dimensions: 50mm x 2.1mm
 Particle size: 1.9µm
 Pore size: 140Å

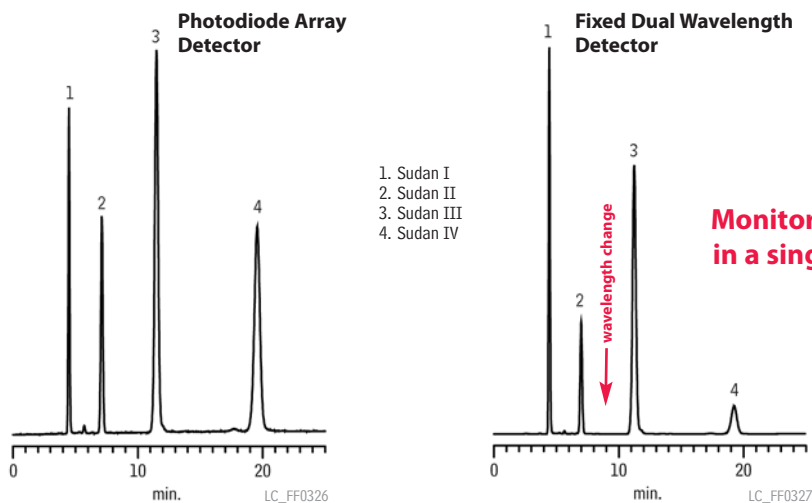
Conditions:
 Mobile phase: A: 10 mM NH₄OAc in water
 B: 10 mM NH₄OAc in methanol

Time (min.)	%B
0.0	10
1.0	10
8.0	90
10.0	90
11.0	10

Flow: 600µL/min
 Temp.: 35°C
 Instrument: Shimadzu Prominence® UFLCXR
 Applied Biosystems 4000 QTRAP® LC/MS/MS system
 Ion Source: TurboIonSpray®, ESI-
 IonSpray Voltage, ESI voltage: -4.2kV (ESI-)
 Gas 1: 40psi
 Gas 2: 60psi
 Source Temp.: 500°C; max pressure ~7,200psi



Sudan Dyes on Ultra Aqueous C18



Sample:
 Inj.: 20µL, mixture of Sudan I, Sudan II, Sudan III, Sudan IV
 Conc.: 20µg/mL each component
 Sample diluent: methanol

Column: Ultra Aqueous C18
 Cat.#: 9178565
 Dimensions: 150mm x 4.6mm
 Particle size: 5µm
 Pore size: 100Å

Conditions:
 Mobile phase: methanol:water, 97:3
 Flow: 1mL/min.
 Temp.: ambient
 Det.: UV @ 476/493/512/357nm (left) or UV @ 488/520nm (right)