

Phenolic Antioxidants on Pinnacle® II C18

Peak List:	Conc. (ppm)
1. propyl gallate	168
2. TBHQ	182
3. 2-BHA + 3-BHA	197
4. BHT	193

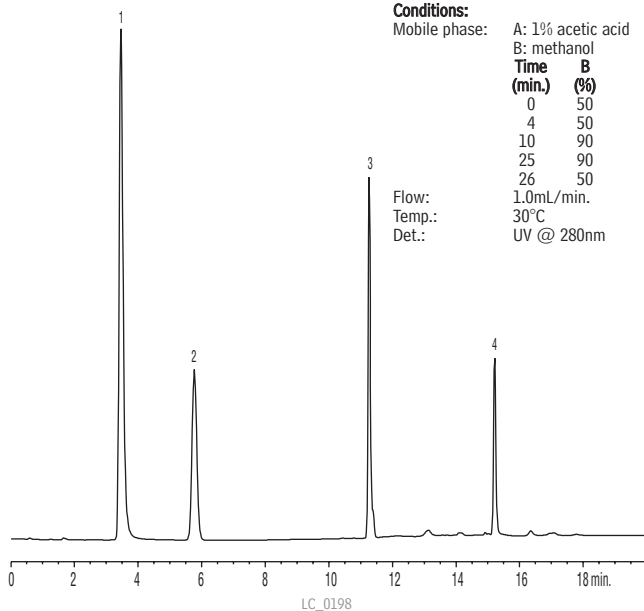
**Sample:**  
Inj.: 10µL  
Solvent: methanol

**Column:** Pinnacle® II C18  
Cat.#: 9214565  
Dimensions: 150mm x 4.6mm  
Particle size: 5µm  
Pore size: 110Å

**Conditions:**  
Mobile phase: A: 1% acetic acid  
B: methanol

Time (min.)	B (%)
0	50
4	50
10	90
25	90
26	50

Flow: 1.0mL/min.  
Temp.: 30°C  
Det.: UV @ 280nm



# ChromaBLOGraphy

Topical and timely insights from top chromatographers.

Visit us at [blog.restek.com](http://blog.restek.com)

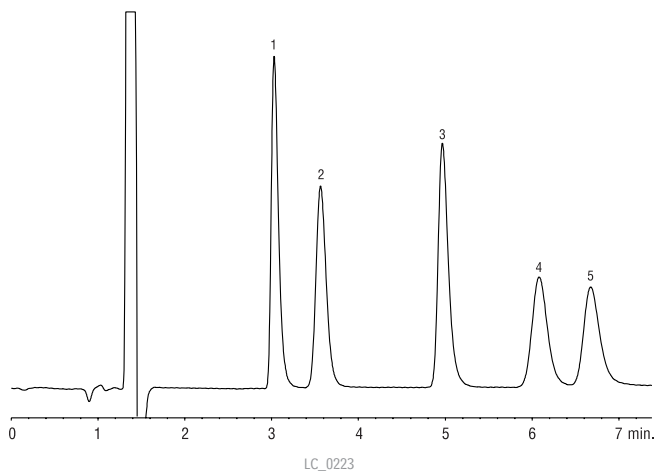
Sugars on Pinnacle® II Amino (3µm)

Peak List:	Conc. (mg/mL)
1. fructose	2.0
2. glucose	2.1
3. sucrose	4.0
4. maltose	4.5
5. lactose	4.4

**Sample:**  
Inj.: 5µL  
Solvent: mobile phase

**Column:** Pinnacle® II Amino  
Cat.#: 9217365  
Dimensions: 150mm x 4.6mm  
Particle size: 3µm  
Pore size: 110Å

**Conditions:**  
Mobile phase: water:acetonitrile (25:75, v/v)  
Flow: 1.5mL/min.  
Temp.: 35°C  
Det.: refractive index @ 35°C



Vanilla Bean Extract on Pinnacle® DB C18 (Fast LC)

**Sample:**  
Inj.: 5µL  
Conc.: 20% v/v commercial extract in water

**Column:** Pinnacle® DB C18  
Cat.#: 9414555  
Dimensions: 50mm x 4.6mm  
Particle size: 5µm  
Pore size: 140Å

**Conditions:**  
Mobile phase: 0.2% v/v phosphoric acid in water:methanol (80:20 v/v)  
Flow: 2mL/min.  
Temp.: 27°C  
Det.: UV @ 254nm

Peak List	Ret. Time (min.)
1. vanillin	2.00

