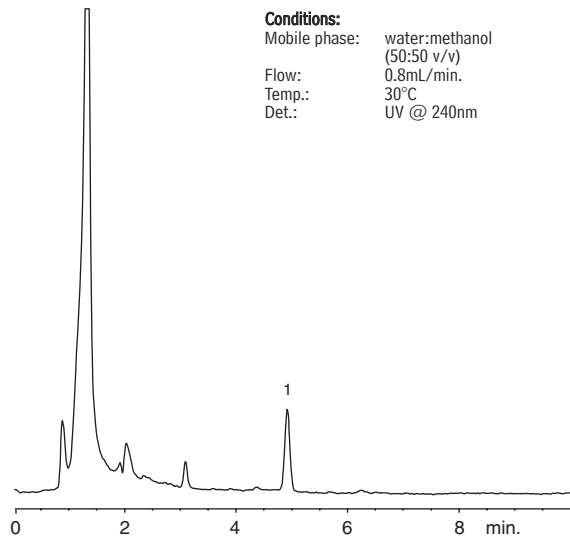


Allicin in Garlic Tablets on Pinnacle® II C18

Peak List:
1. allicin

Sample:
Inj.: 20µL
Conc.: 1.2mg/mL garlic tablet in water deionized water
Solvent:
Column: Pinnacle® II C18
Cat.#: 9214565
Dimensions: 150mm x 4.6mm
Particle size: 5µm
Pore size: 110Å
Conditions:
Mobile phase: water:methanol (50:50 v/v)
Flow: 0.8mL/min.
Temp.: 30°C
Det.: UV @ 240nm



LC_0174

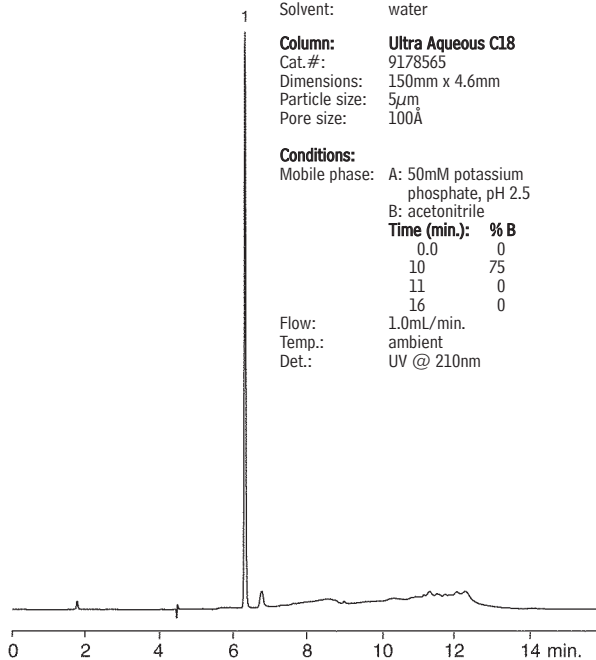
Phenethyl Glucosinolate on Ultra Aqueous C18

Peak List:
1. phenethyl glucosinolate

Sample:
Inj.: 10µL
Conc.: 1,000µg/mL
Solvent: water
Column: Ultra Aqueous C18
Cat.#: 9178565
Dimensions: 150mm x 4.6mm
Particle size: 5µm
Pore size: 100Å
Conditions:
Mobile phase: A: 50mM potassium phosphate, pH 2.5
B: acetonitrile

Time (min.):	% B
0.0	0
10	75
11	0
16	0

Flow: 1.0mL/min.
Temp.: ambient
Det.: UV @ 210nm



LC_0166

Phenolics in Echinacea on Pinnacle® II C18

Sample:
Inj.: 10µL
Conc.: 6.7mg/mL Echinacea capsule contents in sample diluent ethanol:water (70:30, v/v)
Sample temp.: 25°C

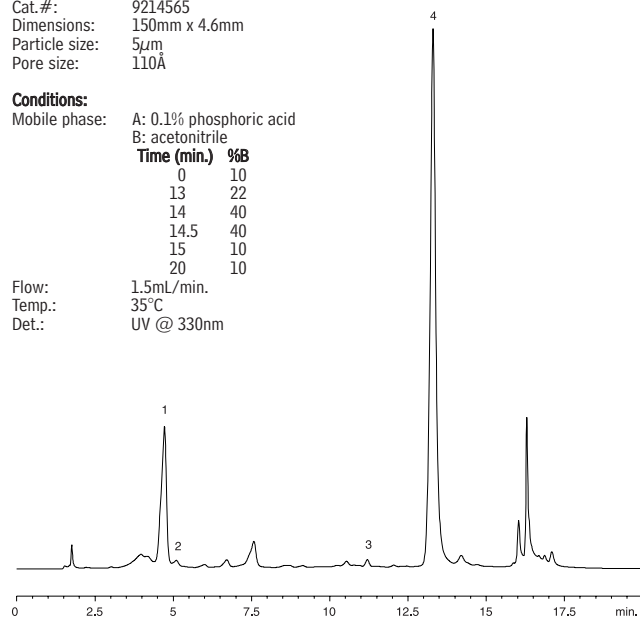
Peak List:
1. caftaric acid
2. chlorogenic acid
3. echinacoside
4. cichoric acid

Column: Pinnacle® II C18
Cat.#: 9214565
Dimensions: 150mm x 4.6mm
Particle size: 5µm
Pore size: 110Å

Conditions:
Mobile phase: A: 0.1% phosphoric acid
B: acetonitrile

Time (min.)	%B
0	10
13	22
14	40
14.5	40
15	10
20	10

Flow: 1.5mL/min.
Temp.: 35°C
Det.: UV @ 330nm



LC_0195

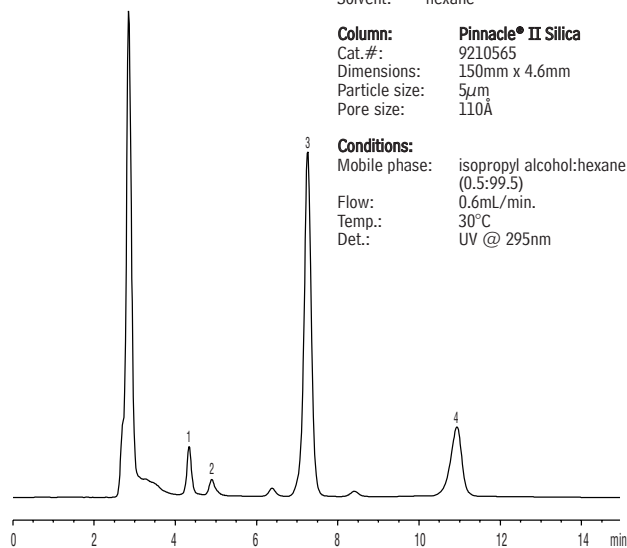
Tocopherols in Soy Oil on Pinnacle® II Silica

Peak List:
1. α-tocopherol
2. β-tocopherol
3. γ-tocopherol
4. δ-tocopherol

Sample:
Inj.: 10µL
Conc.: approx. 1.25% soy oil
Solvent: hexane

Column: Pinnacle® II Silica
Cat.#: 9210565
Dimensions: 150mm x 4.6mm
Particle size: 5µm
Pore size: 110Å

Conditions:
Mobile phase: isopropyl alcohol:hexane (0.5:99.5)
Flow: 0.6mL/min.
Temp.: 30°C
Det.: UV @ 295nm



LC_0197