

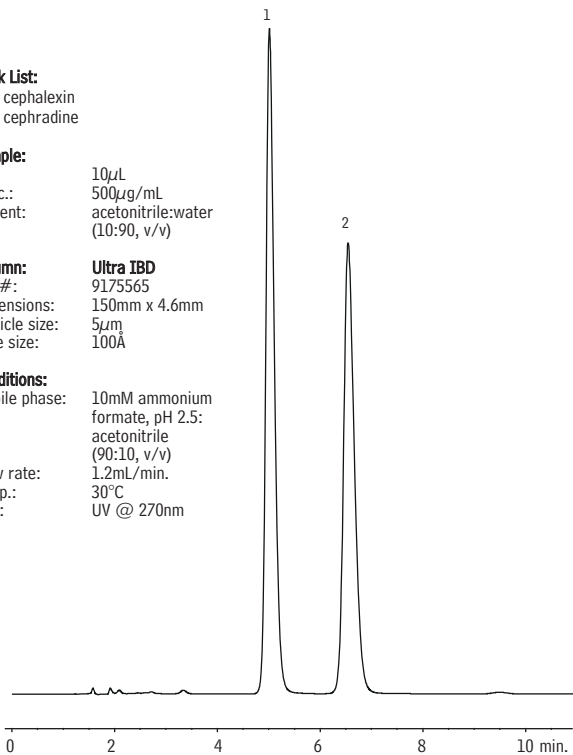
Antibiotic Cephalexin on Ultra IBD

**Peak List:**  
 1. cephalexin  
 2. cephadrine

**Sample:**  
 Inj.: 10µL  
 Conc.: 500µg/mL  
 Solvent: acetonitrile:water  
 (10:90, v/v)

**Column:** Ultra IBD  
 Cat.#: 9175565  
 Dimensions: 150mm x 4.6mm  
 Particle size: 5µm  
 Pore size: 100Å

**Conditions:**  
 Mobile phase: 10mM ammonium  
 formate, pH 2.5:  
 acetonitrile  
 (90:10, v/v)  
 Flow rate: 1.2mL/min.  
 Temp.: 30°C  
 Det.: UV @ 270nm



LC\_0094

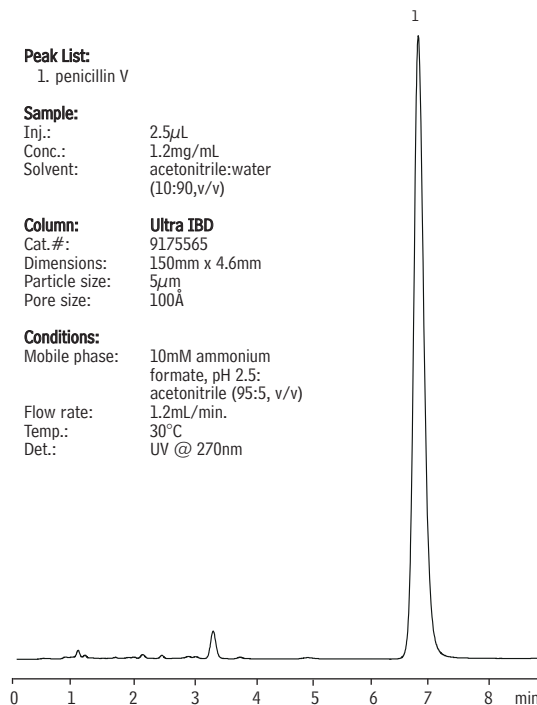
Antibiotic Penicillin V on Ultra IBD

**Peak List:**  
 1. penicillin V

**Sample:**  
 Inj.: 2.5µL  
 Conc.: 1.2mg/mL  
 Solvent: acetonitrile:water  
 (10:90,v/v)

**Column:** Ultra IBD  
 Cat.#: 9175565  
 Dimensions: 150mm x 4.6mm  
 Particle size: 5µm  
 Pore size: 100Å

**Conditions:**  
 Mobile phase: 10mM ammonium  
 formate, pH 2.5:  
 acetonitrile (95:5, v/v)  
 Flow rate: 1.2mL/min.  
 Temp.: 30°C  
 Det.: UV @ 270nm



LC\_0096

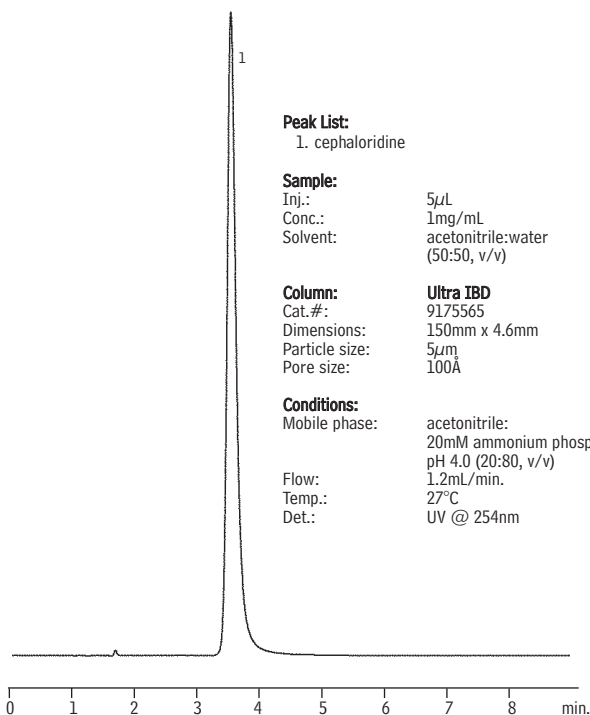
Antibiotic Cephaloridine on Ultra IBD  
 (Reversed Phase)

**Peak List:**  
 1. cephaloridine

**Sample:**  
 Inj.: 5µL  
 Conc.: 1mg/mL  
 Solvent: acetonitrile:water  
 (50:50, v/v)

**Column:** Ultra IBD  
 Cat.#: 9175565  
 Dimensions: 150mm x 4.6mm  
 Particle size: 5µm  
 Pore size: 100Å

**Conditions:**  
 Mobile phase: acetonitrile:  
 20mM ammonium phosphate,  
 pH 4.0 (20:80, v/v)  
 Flow: 1.2mL/min.  
 Temp.: 27°C  
 Det.: UV @ 254nm



LC\_0102

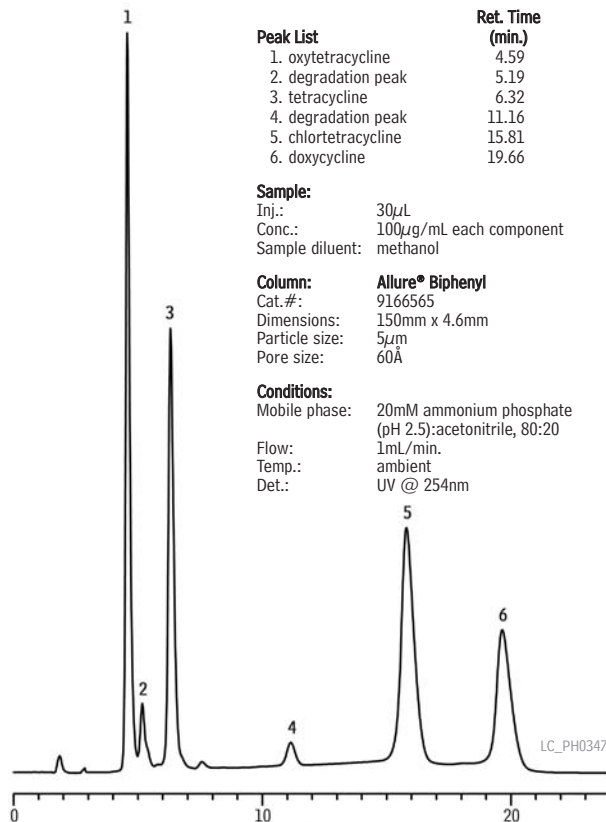
Tetracycline Mix on Allure® Biphenyl

Peak List	Ret. Time (min.)
1. oxytetracycline	4.59
2. degradation peak	5.19
3. tetracycline	6.32
4. degradation peak	11.16
5. chlortetracycline	15.81
6. doxycycline	19.66

**Sample:**  
 Inj.: 30µL  
 Conc.: 100µg/mL each component  
 Sample diluent: methanol

**Column:** Allure® Biphenyl  
 Cat.#: 9166565  
 Dimensions: 150mm x 4.6mm  
 Particle size: 5µm  
 Pore size: 60Å

**Conditions:**  
 Mobile phase: 20mM ammonium phosphate  
 (pH 2.5):acetonitrile, 80:20  
 Flow: 1mL/min.  
 Temp.: ambient  
 Det.: UV @ 254nm



LC\_PH0347