



restek **innovation!**

Baseline resolution in less than 3 minutes.

similar **phases**

DB-ALC1, DB-ALC2

Blood Alcohol Analysis

Rtx®-BAC1/Rtx®-BAC2

- Application-specific columns for blood alcohol analysis—achieve baseline resolution in less than 3 minutes. Also excellent for abused inhalant anesthetics, γ -hydroxybutyrate (GHB)/ γ -butyrolactone (GBL), glycols, and common industrial solvents.
- Rtx®-BAC2 confirmation column provides four elution order changes under the same conditions.
- Stable to 260 °C.

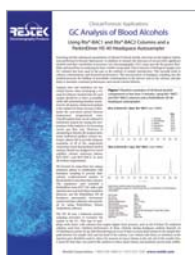
These columns separate to baseline all blood alcohol compounds in blood, breath, or urine, in less than 3 minutes, under isothermal conditions. Isothermal analysis increases productivity by eliminating the need for oven cycling. Confirmation is easily achieved with this tandem set because there are four elution order changes between the two columns.

Rtx®-BAC1 Columns (fused silica) (proprietary Crossbond® phase)

ID	df	temp. limits	30-Meter
0.32mm	1.80 μ m	-20 to 240/260°C	18003
0.53mm	3.00 μ m	-20 to 240/260°C	18001

Rtx®-BAC2 Columns (fused silica) (proprietary Crossbond® phase)

ID	df	temp. limits	30-Meter
0.32mm	1.20 μ m	-20 to 240/260°C	18002
0.53mm	2.00 μ m	-20 to 240/260°C	18000



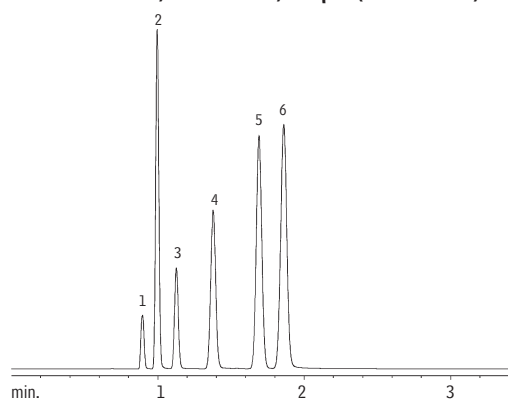
free literature

GC Analysis of Blood Alcohols

Download your free copy from www.restek.com
lit. cat.# 59598A

Rapid, reliable blood alcohol testing, using Rtx®-BAC 1 and Rtx®-BAC2 columns.

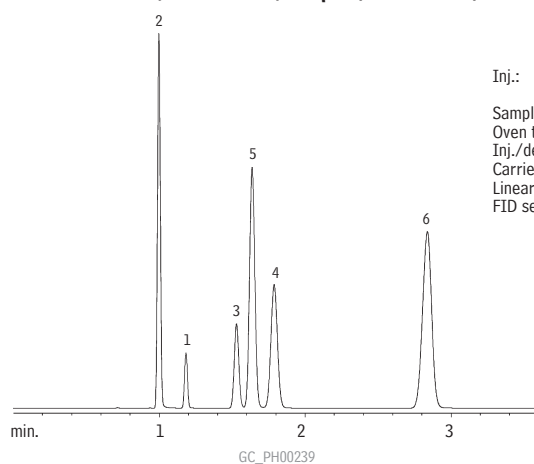
Rtx®-BAC1 30 m, 0.53 mm ID, 3.0 μ m (cat.# 18001)



Blood alcohol analysis in less than 3 minutes!

1. methanol
2. acetaldehyde
3. ethanol
4. isopropanol
5. acetone
6. *n*-propanol

Rtx®-BAC2 30 m, 0.53 mm ID, 2.0 μ m (cat.# 18000)



Inj.: 1.0mL headspace sample of a blood alcohol mix
Sample conc.: 0.1% per compound
Oven temp.: 40°C
Inj./det. temp.: 200°C
Carrier gas: helium
Linear velocity: 80cm/sec. set @ 40°C
FID sensitivity: 1.28 x 10⁻¹¹ AFS

Get More!
Clinical, Forensic & Toxicology Solutions Online
www.restek.com/CFT