

Chlorinated Pesticides Analysis

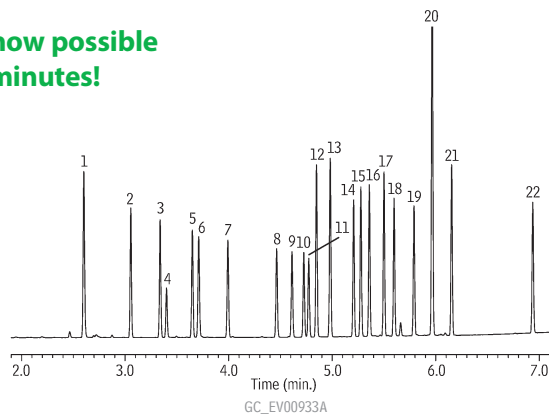
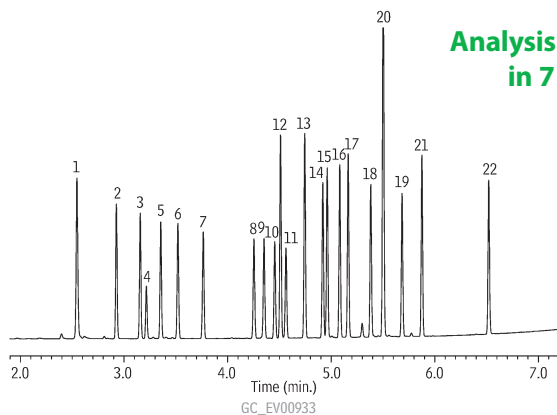


Fast GC analyses of chlorinated pesticides on Rtx[®]-CLPesticides and Rtx[®]-CLPesticides2 columns.

Rtx[®]-CLPesticides & Rtx[®]-CLPesticides2 columns (0.32 mm ID)

Rtx[®]-CLPesticides

Rtx[®]-CLPesticides2



Analysis now possible
in 7 minutes!

Columns: Rtx[®]-CLPesticides, 30m, 0.32mm ID, 0.32 μ m (cat.# 11141) and Rtx[®]-CLPesticides2, 30m, 0.32mm ID, 0.25 μ m (cat.# 11324) with 5m x 0.32mm ID Rxi[®] deactivated guard tubing (cat.# 10039), connected using Deactivated Universal "V" Press-Tight[®] connector (cat.# 20405-261)

Sample: Organochlorine Pesticide Mix AB #2, 8-80 μ g/mL each component in hexane/toluene (cat.# 32292), Pesticide Surrogate Mix, 200 μ g/mL each component in acetone (cat.# 32000)

Inj.: 1.0 μ L splitless (hold 0.3 min.), 4mm single gooseneck inlet liner (cat.# 20799)

Inj. temp.: 250°C

Carrier gas: helium, constant flow

Linear velocity: 60cm/sec. @ 120°C

Oven temp.: 120°C to 200°C @ 45°C/min. to 230°C @ 15°C/min. to 330°C (hold 2 min.) @ 30°C/min.

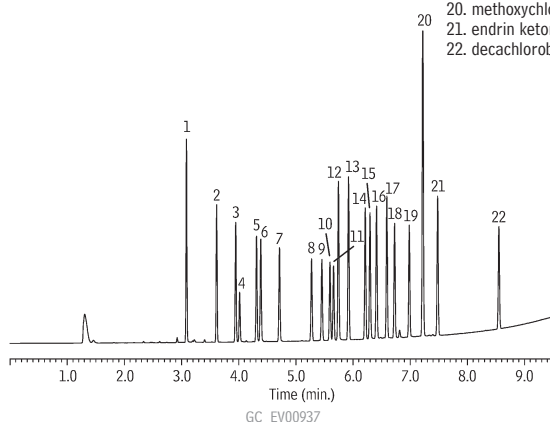
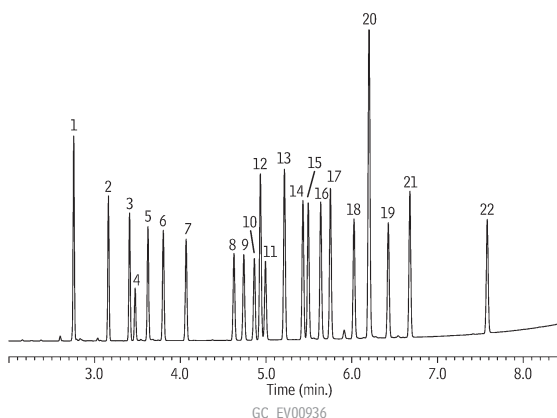
Det.: Agilent 6890 w/ μ -ECD @ 330°C

1. 2,4,5,6-tetrachloro-*m*-xylene (SS)
2. α -BHC
3. γ -BHC
4. β -BHC
5. δ -BHC
6. heptachlor
7. aldrin
8. heptachlor epoxide (isomer B)
9. γ -chlordane
10. α -chlordane
11. endosulfan I
12. 4,4'-DDE
13. dieldrin
14. endrin
15. 4,4'-DDD
16. endosulfan II
17. 4,4'-DDT
18. endrin aldehyde
19. endosulfan sulfate
20. methoxychlor
21. endrin ketone
22. decachlorobiphenyl (SS)

Rtx[®]-CLPesticides & Rtx[®]-CLPesticides2 columns (0.53 mm ID)

Rtx[®]-CLPesticides

Rtx[®]-CLPesticides2



Columns: Rtx[®]-CLPesticides, 30m, 0.53mm ID, 0.50 μ m (cat.# 11140) and Rtx[®]-CLPesticides2, 30m, 0.53mm ID, 0.42 μ m (cat.# 11340) with 5m x 0.53mm ID Rxi[®] deactivated guard tubing (cat.# 10054), connected using Siltek[®] Treated Universal "Y" Press-Tight[®] connector (cat.# 20486)

Sample: Organochlorine Pesticide Mix AB #2, 8-80 μ g/mL each component in hexane/toluene (cat.# 32292), Pesticide Surrogate Mix, 200 μ g/mL each component in acetone (cat.# 32000)

Inj.: 1.0 μ L splitless (hold 0.3 min.), 4mm single gooseneck inlet liner (cat.# 20799)

Inj. temp.: 250°C

Carrier gas: helium, constant flow

Linear velocity: 45cm/sec. @ 120°C

Oven temp.: 120°C to 200°C @ 45°C/min. to 230°C @ 12.5°C/min. to 320°C (hold 2 min.) @ 20°C/min.

Det.: Agilent 6890 w/ μ -ECD @ 330°C