



# Sky™ Inlet Liners

## True Blue Performance

- Increase accuracy and reproducibility with state-of-the-art deactivation.
- Achieve lower detection limits for a wide range of active compounds.
- Use wool without risking the loss of sensitive analytes.

When faced with complex choices, simple solutions stand out. Sky™ inlet liners from Restek use a comprehensive, state-of-the-art deactivation and are the only blue liners on the market—making them an easy-to-recognize solution to common inlet problems.

New Sky™ liners give you the inertness you need for more accurate trace level results.

many active compounds. In addition to improved data quality, you'll benefit from fewer liner changes and less downtime for maintenance.

Selecting the right liner for your application can be a daunting task. Sky™ inlet liners make the choice simple; the comprehensive deactivation, distinctive color, and availability in popular configurations mean Sky™ liners are the best choice for optimizing chromatographic performance. Regardless of your application, Sky™ liners provide reliable inertness and assured performance, day-after-day and analysis-after-analysis.



## The Story Behind Sky™

For over 25 years, Restek's vision has been to be the company chromatographers trust. This philosophy is the cornerstone of our business, and it's the reason our chemists and engineers are dedicated to developing innovative, best-in-class products like Sky™ liners. As chromatographers, we understand your needs and strive to develop and deliver products that make your life easier.

With Sky™ liners our goal was to create a state-of-the-art deactivation that provides superior performance, but why did we make them blue? Restek has always been associated with the color blue; to us, it signifies strength, innovation, and excellence. We made SKY™ liners blue because it represents the technological advancements and unmatched quality that define Restek products. Choose blue—the best choice for dependable results.

[www.restek.com/sky](http://www.restek.com/sky)

**HR**OMalytic +61(0)3 9762 2034  
**ECH**nology Pty Ltd

**Australian Distributors**  
Importers & Manufacturers  
[www.chromtech.net.au](http://www.chromtech.net.au)

Website NEW : [www.chromalytic.com.au](http://www.chromalytic.com.au) E-mail : [info@chromtech.net.au](mailto:info@chromtech.net.au) Tel: 03 9762 2034 . . . in AUSTRALIA

Website : [www.chromtech.net.au](http://www.chromtech.net.au) E-mail : [info@chromtech.net.au](mailto:info@chromtech.net.au) TelNo : 03 9762 2034 . . . in AUSTRALIA

## Simple Solutions:

### Inert Sky™ Inlet Liners Improve Accuracy and Precision for a Wide Range of Analytes

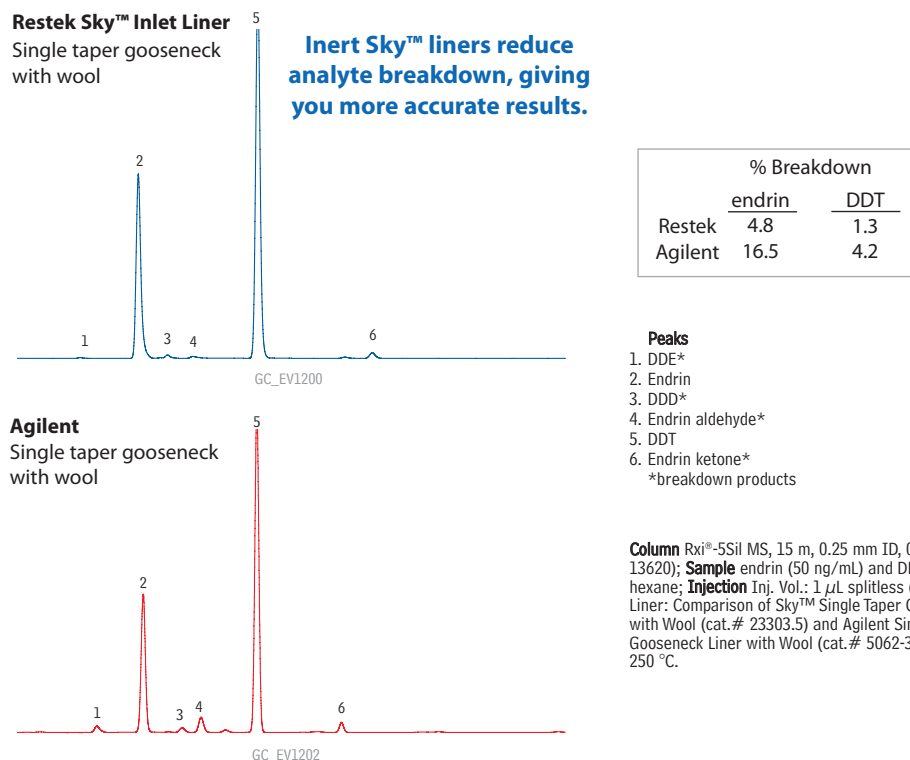
Many chromatographic problems, such as poor response and missing or tailing peaks are caused by activity in the inlet liner. These effects complicate quantification and can be particularly problematic for sensitive analytes. New Sky™ inlet liners from Restek offer exceptional inertness, assuring enhanced transfer of analytes to the column, good response, and highly symmetric peaks. The inertness of these liners is due to a state-of-the-art deactivation process that completely passivates the liner and wool so that they are inert to a wide variety of reactive analytes.

Some deactivations, such as base deactivation, are effective only for particular target compound chemistries. In contrast, the balanced deactivation of Sky™ liners prevents interactions with many chemical classes. As shown on the following pages, complex pesticide probes, as well as both acidic and basic compounds have strong responses and excellent peak shapes, demonstrating the inertness of Sky™ liners. With new Sky™ inlet liners you will see improved sensitivity, accuracy, and reproducibility liner-to-liner, which allows you to quantify challenging compounds at trace levels with confidence.

#### Reduced Breakdown Improves Trace Analyses

Endrin & DDT are important analytes for the environmental and food safety industries, and also serve as excellent general probes for liner inertness. Both compounds are sensitive to different modes of activity due to their chemical structures and because they are analyzed at very low concentrations (typically parts-per-billion concentrations for  $\mu$ ECD analyses). As shown in Figure 1, Sky™ liners are significantly more inert than comparable liners from Agilent, showing 3-4 times less endrin and DDT breakdown.

**Figure 1** Endrin and DDT breakdown is significantly reduced with Sky™ liners, demonstrating higher inertness.



#### did you know?

Sky™ inlet liners from Restek are extensively tested to assure consistent product quality. The color and label have been shown not to interfere with analyses or contribute to background. Choose blue—the best liner for sensitive applications.

**HROMalytic** +61(0)3 9762 2034  
**ECHnology** Pty Ltd

**Australian Distributors**  
Importers & Manufacturers  
[www.chromtech.net.au](http://www.chromtech.net.au)

Website NEW : [www.chromalytic.com.au](http://www.chromalytic.com.au) E-mail : [info@chromtech.net.au](mailto:info@chromtech.net.au) Tel: 03 9762 2034 . . . in AUSTRALIA

Website : [www.chromtech.net.au](http://www.chromtech.net.au) E-mail : [info@chromtech.net.au](mailto:info@chromtech.net.au) TelNo : 03 9762 2034 . . . in AUSTRALIA









