

# PEAK SIMPLE

You need three installation packages:

October 20, 2016

One covers all 32 bit Window operating systems XP or later (except Win10 32 bit is not supported).

Another covers all 64 bit Windows except Win 10

The last one covers 64-bit Win 10 only

DLLs:

the new USB\_2K.dll (10.12.16.0) for the M302 and SRI333.dll (10.12.16.0) for the M333 will work in all three installation packages.

Any older PeakSimple installation can be made to work with the older or newer drivers by substituting these two files (or newer) for the original DLLs.

With the two dlls above, any online driver installation or update will work on any supported operating system.

Drivers:

For manual installations of drivers, three files are required in 64 bit windows, and two files for 32 bit. An .inf file and a .sys file are always needed. In 64-bit Windows, you also need a .cat file. You can generally not distinguish the different versions of these files by their names.

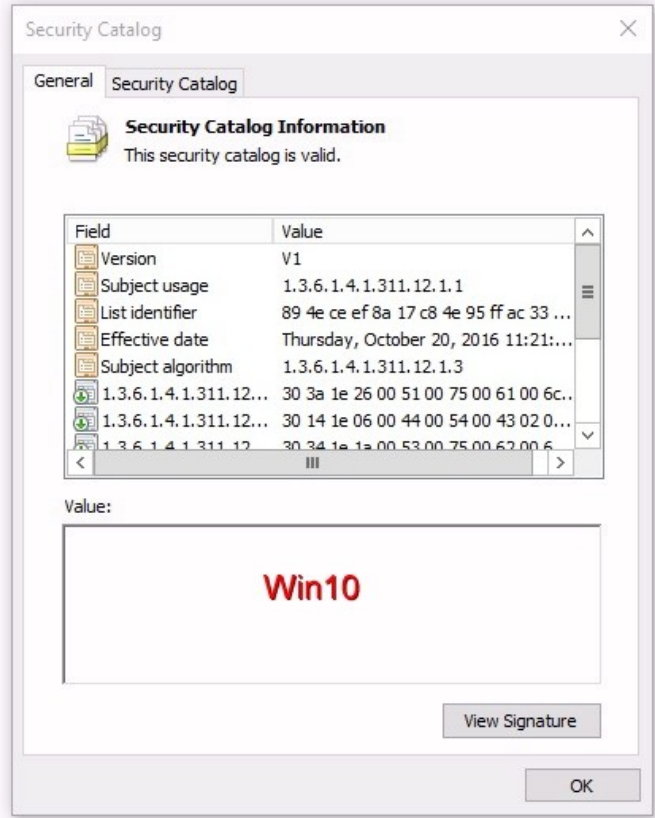
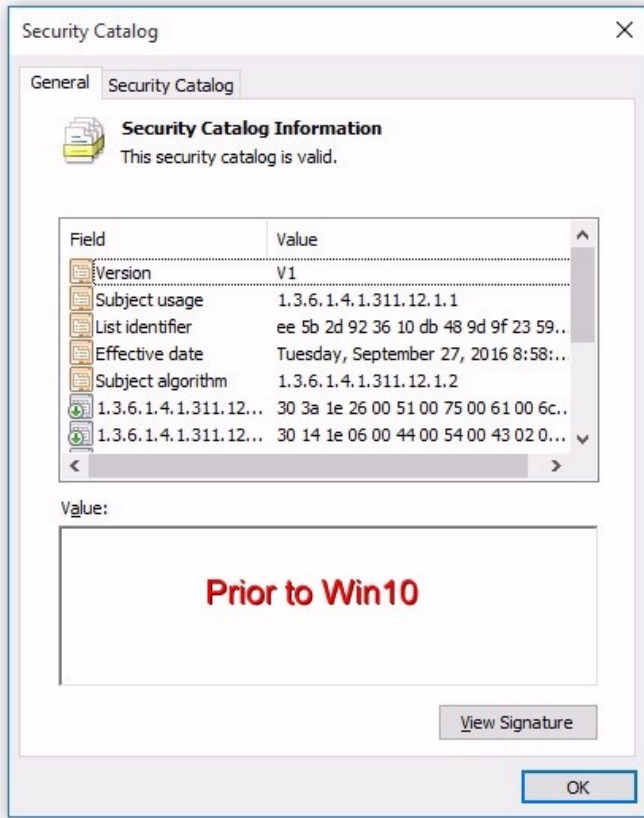
.inf files are text files. Open one in wordpad or notepad. What matters is the ClassGuid:

```
-----  
;                                 
;           Lawson Labs Inc.      
;           USB DRIVER FILE INF File  
;                                 
-----
```

```
[Version]  
Signature="$Windows NT$"  
Class=USB  
ClassGuid={36FC9E60-C465-11CF-8056-444553540000} Provider=%MANUFACTURER%  
;LayoutFile=layout.inf  
CatalogFile=%FILENAME%.cat  
  
etc
```

For distinguishing the .sys files, right click on the filename and select Properties. In 32 bit Windows





## Installation files

### For 32 bit Windows

SRI\_USB.INF  
ClassGuid={36FC9E60-C465-11CF-8056-444553540000}  
LL\_USB2k.sys  
shown in "properties->version: File version: 10,13, 2008

### For 64 bit Windows prior to Win10:

LL\_USB\_v64.inf  
ClassGuid={36FC9E60-C465-11CF-8056-444553540000}  
LL\_USB2k.sys  
shown in "properties->DigitalSignatures (only one listed):  
Lawson Labs Inc. sha1 Wednesday, December 23, 2009  
LL\_USB2k.cat  
See screenshots above, List Identifier



## SRI Tech Support [www.srigc.com](http://www.srigc.com)

### For Win10 only:

LL\_USB\_v64.inf

ClassGuid={88BAE032-5A81-49f0-BC3D-A4FF138216D6}

LL\_USB2k.sys

shown in "properties->DigitalSignatures (both are required):

Lawson Labs Inc. sha1 Thursday, October 20, 2016

Microsoft Windows . . . sha256 Thursday, October 20, 2016

LL\_USB2k.cat

See screenshots above, List Identifier

Older and newer versions will always co-exist on the same computer only if the two new dlls are placed in all the application folders.

