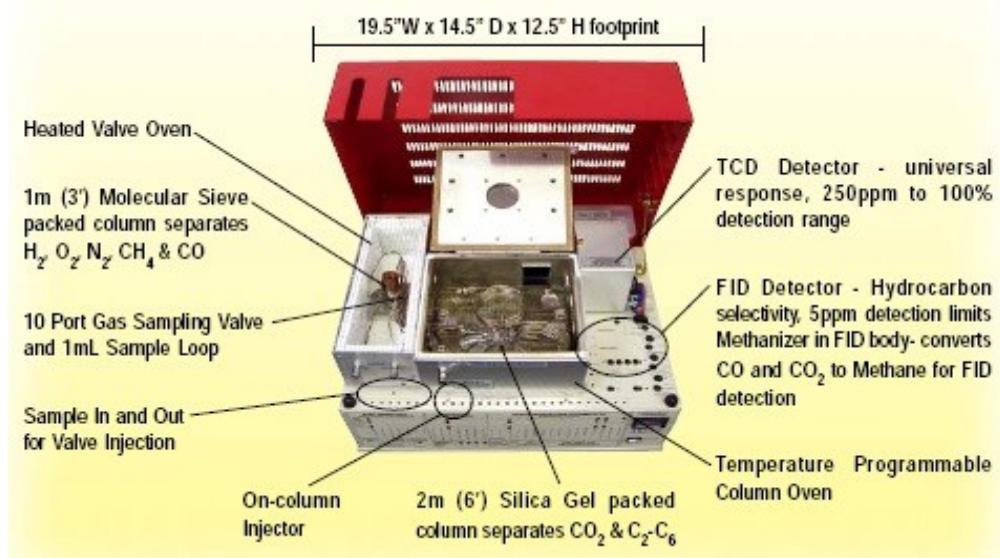
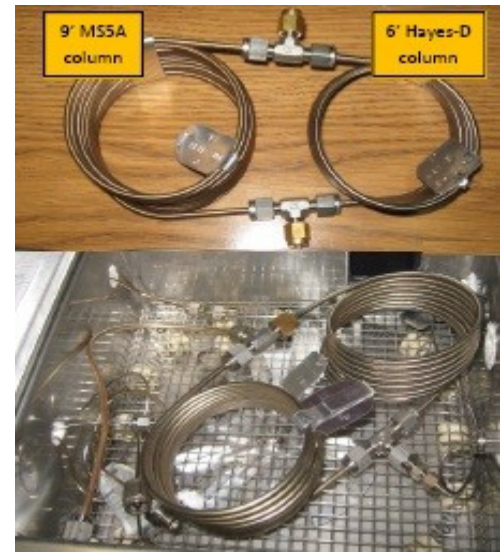


SRI Multi Gas Analyzer 2016

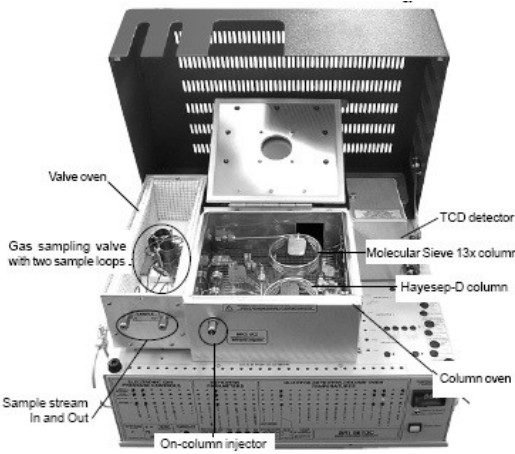
MG#1



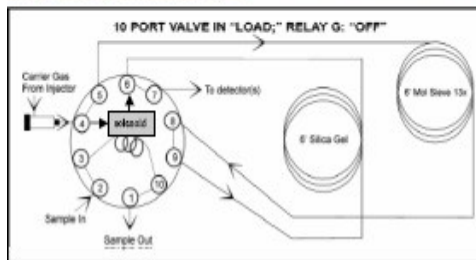
CTR1 dual Column



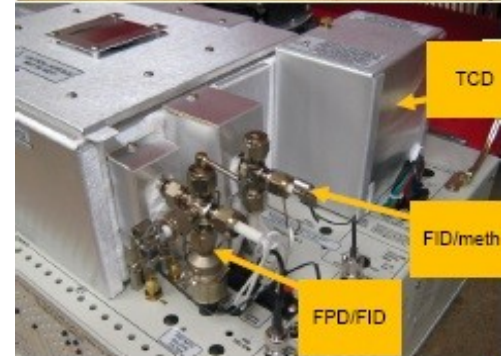
MG#2



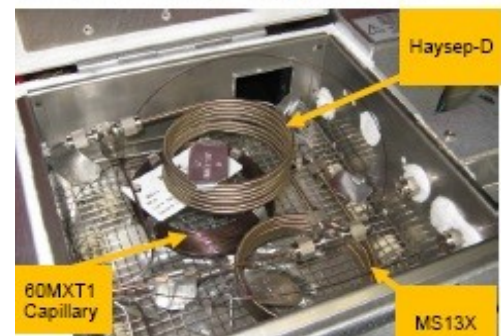
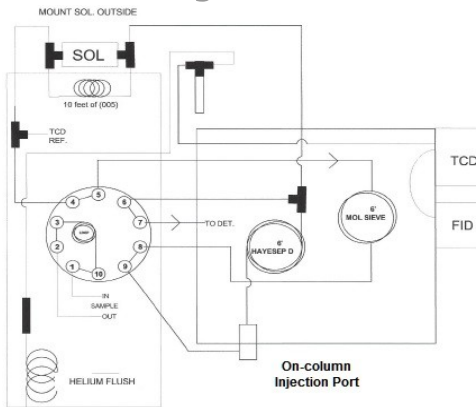
MG#3



MG#3 plus Sulfur



MG#3 + Inj Port



MG#5



- TCD for 200ppM-50% Methaniser-FID to low ppm
- H_2 analysis requires Ar Carrier
- Designs are cost compromised
- Multiple Columns require Technical Understanding and chromatogram interpretation due to some peak duplication