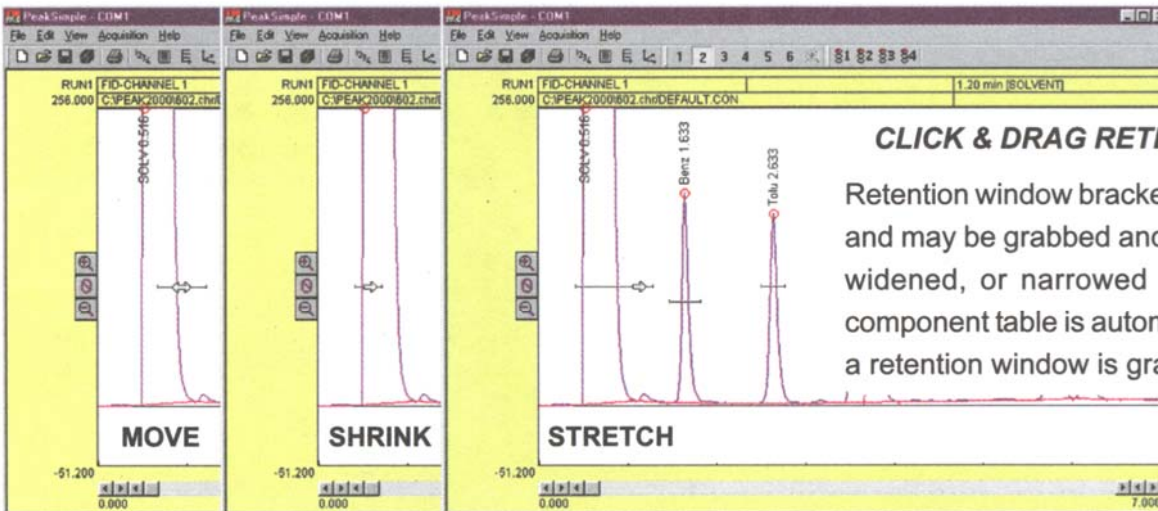
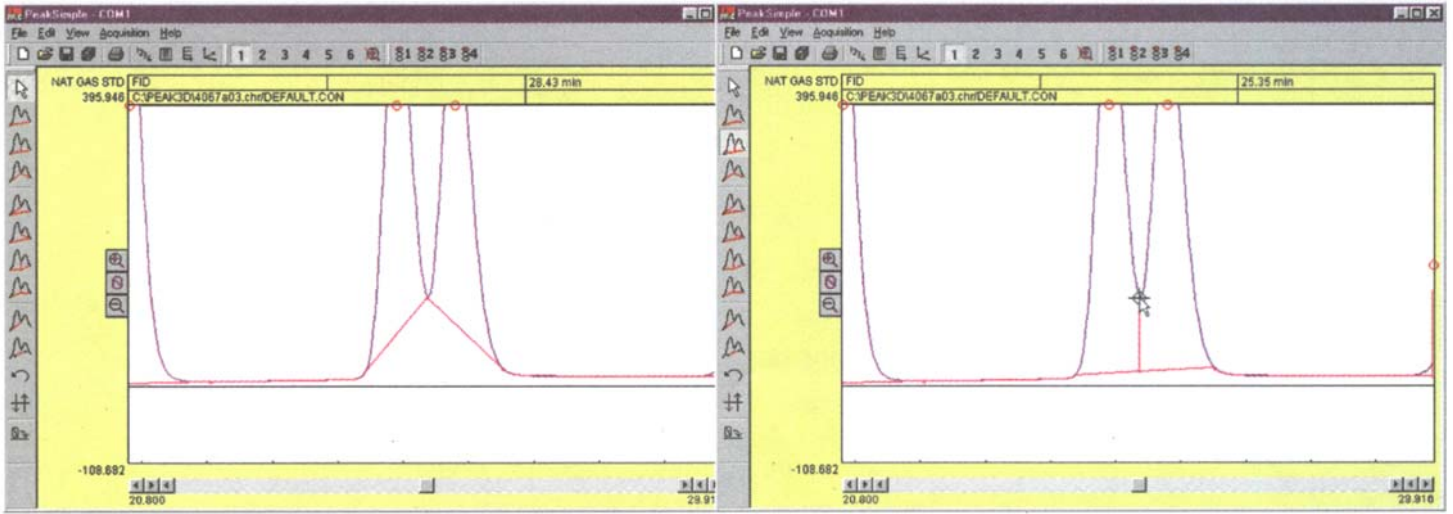


PeakSimple Software Features

MANUAL INTEGRATION

Manual integration tools allow the user to refine the integration method applied to any peak. Baseline projection may be "rubber-banded" from point to point, forced to a valley, dropped vertically, skimmed, etc. The example below shows the use of the "Drop" tool to drop a vertical line from the valley of the conjoined peaks to the baseline.



CLICK & DRAG RETENTION WINDOWS

Retention window brackets are visible onscreen and may be grabbed and dragged onto a peak, widened, or narrowed with the mouse. The component table is automatically updated when a retention window is graphically modified.

CONTROL FILES

Save any changes you make in an analysis to a control file and use it again and again for method reproducibility. Control files contain temperature or gradient programming, component tables, external events, channel details, integration, post-run actions, and more! Create a control file for each method you typically perform. The number of control files you can have is limited only by your disk space.

