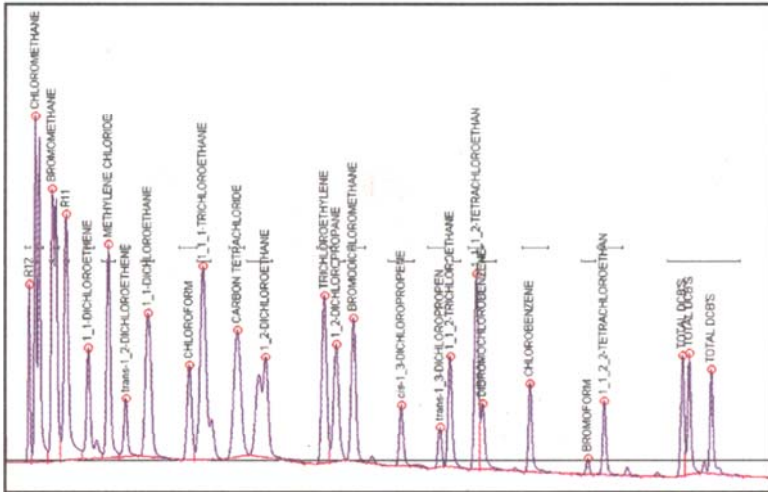
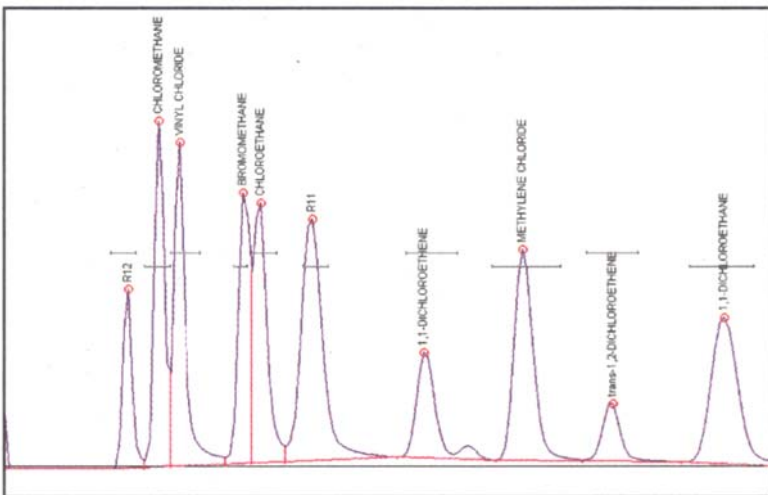


Environmental & BTEX GC Systems



The DELCD chromatogram is shown at left in more detail and with the peaks labeled for identification. The DELCD is completely selective for compounds containing chlorine and/or bromine. Other analytes do not respond at all, even at very high levels. The DELCD actually operates on the FID's exhaust gases; therefore, all contaminants are precombusted by the FID to CO₂ and H₂O.



The first few peaks in the 8021 standard, including vinyl chloride, are of special interest to many analysts. The chromatogram to the left shows the expanded detail of the first few peaks in the analysis (the VOC gases). Note the exceptionally good resolution and peak shape delivered by the SRI system with its dual trap technology.

Please see pages 76-77 for more information on the Method 5030/5035 Purge & Trap.

8610-0059 Environmental GC System

8610-0050 BTEX GC: same as the Environmental GC, but with PID and FID detectors only (no DELCD detector)

8690-5052 Upgrade to Method 5030/5035 compliant Purge & Trap



OPTIONS & UPGRADES: Thermal Desorber, split/splitless and PTV injectors, 6 channel USB data system, NPD detector, additional column(s), autosampler
(VOLTAGE: for 110VAC, use "part number-1" [ex: 8610-0059-1] for 220VAC, use "part number-2")