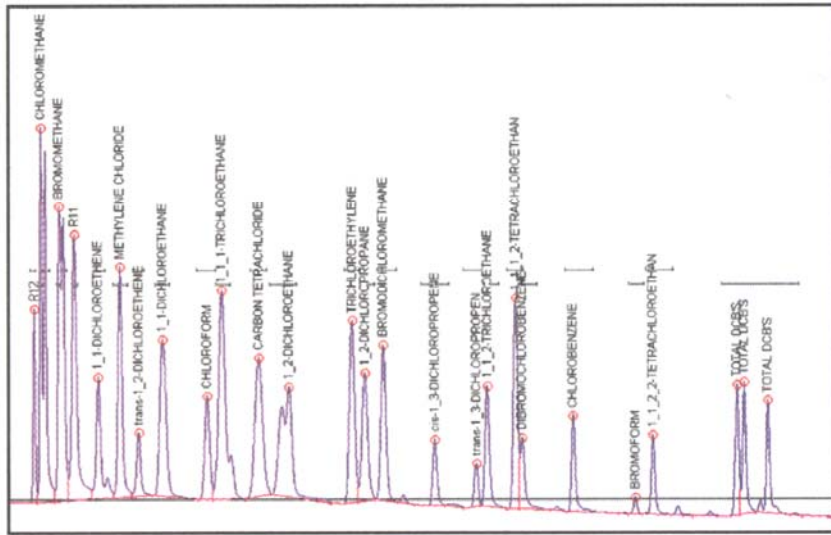
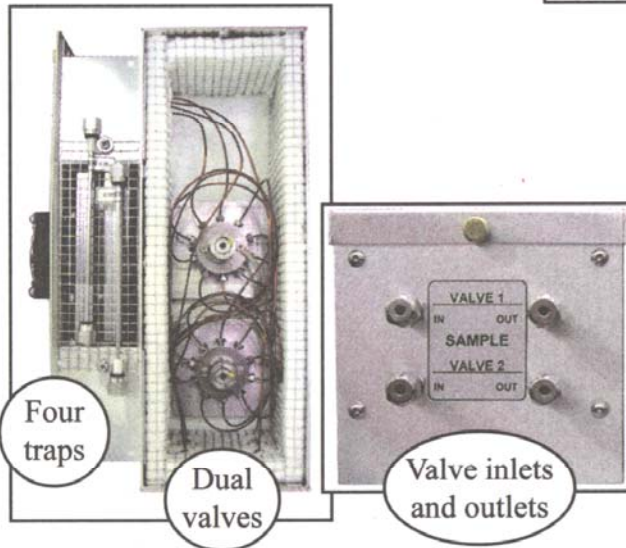
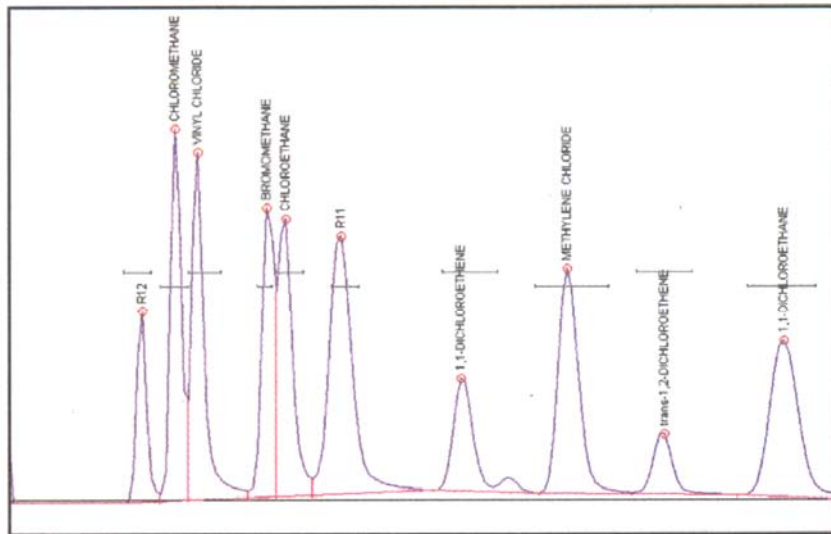


TO-14 Air Monitoring GC System

The DELCD is completely selective for compounds containing chlorine and/or bromine. Other analytes do not respond at all, even at very high levels. The DELCD actually operates on the FID's exhaust gases; therefore, all contaminants are precombusted by the FID to CO₂ and H₂O.



The first few peaks in the TO-14 standard, especially vinyl chloride, are of special interest to many analysts. This chromatogram shows the expanded detail of the first few peaks (the VOC gases) in the analysis shown above. Note the exceptionally good resolution and peak shape delivered by the SRI system's dual trap technology.



This SRI GC has been customized with a dual TO-14 Air Concentrator: four traps, and two gas sampling valves.

8610-0114

TO-14 Air Monitoring GC System

\$22,495.00



OPTIONS & UPGRADES: Split/splitless and PTV injectors, 6 channel USB data system, additional TO-14 Air Concentrator, additional detector, additional column(s), H₂-50XR hydrogen generator (VOLTAGE: for 110VAC, use 8610-0114-1; for 220VAC, use 8610-0114-2)