

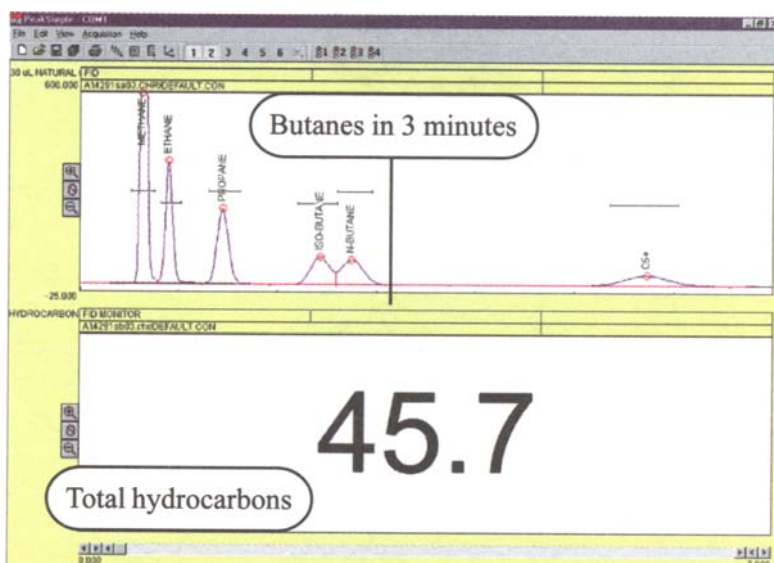
Rack Mount Mud-Logging GC System

- **Dual FID Detectors**
- **HayeSep-D Column**
- **10-port Gas Sampling Valve**
- **Standard & Sample Stream Solenoids**
- **Built-in "whisper quiet" Air Compressor**
- **4 channel PeakSimple Data System**
- **...on the rack mountable 410 chassis**

The Rack Mount Mudlogging GC system provides a continuous reading of total hydrocarbons in a gas stream while periodically performing a chromatographic separation to determine the exact composition of the sample gas stream.



At a regulated pressure, the sample gas stream flows through the loop of the 10 port gas sampling valve and also to the second FID detector, which continually monitors the total hydrocarbon content of the gas. Periodically, the gas sampling valve injects the contents of its loop into the GC column, where it is separated into the constituent hydrocarbon peaks and detected by the first FID detector. The operator controls the timing of the valve injections through the built-in, four channel PeakSimple data system. Solenoids for sample and standard stream switching are included and are selectable through the data system.



The PeakSimple data system controls the automated valve injection sequence and displays both the continuous total hydrocarbon reading as well as the separated peaks. An alarm function alerts the operator for any out-of-range readings. Summary reports are easily printed or copied to Excel or similar programs.

0410-0065 Rack Mount Mud-Logging GC System



OPTIONS & UPGRADES: 6 channel USB PeakSimple data system,
(VOLTAGE: for 110VAC, use 0410-0065-1; for 220VAC, use 0410-0065-2)

Preconfigured GC Systems

29