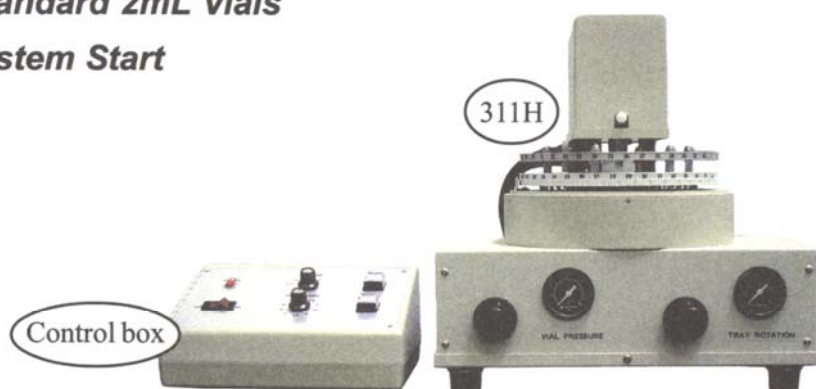


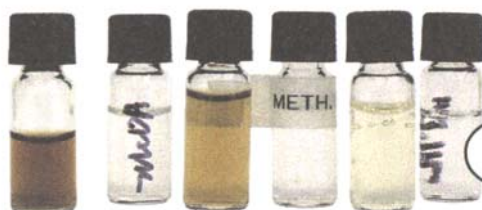
Model 311H 42-Vial Liquid Autosampler

- Connects to SRI GC Injection Port
- Use it with On-Column, Heated, or Split/Splitless Injectors
- Adjustable Injection Volume
- Uses Standard 2mL Vials
- Data System Start



The SRI Model 311H 42-Vial Liquid Autosampler connects to the SRI Model 8610 or 310 GC injection ports with a single, finger-tight nut for perfect alignment. The Model 311H can be used with the On-column, Heated Flash Vaporization, or Heated Split/Splitless Injectors.

The sample tray and syringe require helium, air, or nitrogen at 60psi to actuate the moving parts. A simple contact closure from the PeakSimple data system (built into all SRI GCs) makes the autosampler flush the syringe, inject the sample, then advance the tray to the next vial position. The injection volume is adjustable from 0-3 μ L, and the unit is supplied with 100 screw-top vials and septa. The Model 311H uses common 2mL vials (crimp or screw top), available from many suppliers. The autosampler flushes its syringe with the sample itself, so each vial must be filled with at least 1 mL of sample.



The 311H uses standard 2mL vials

8690-0068

Model 311H 42-Vial Liquid Autosampler

\$ CALL