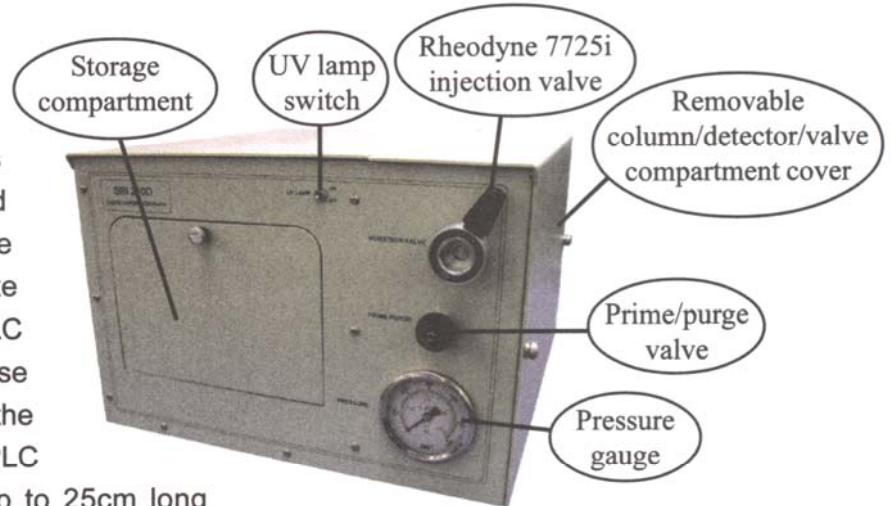


Educational HPLC System

- **254nm UV Detector**
- **Rheodyne 7725i Injection Valve with remote start**
- **6000psi Stainless steel pump head with piston flush**
- **Pulse damper, prime/purge valve, and pressure gauge**
- **1 channel PeakSimple Data System**

The SRI Educational HPLC system provides the basics you need to teach the fundamentals of liquid chromatography. Most controls used during analysis are conveniently located on the instrument's front control panel. A separate compartment on the right-hand side of the HPLC houses the UV detector, pump head and pulse damper, and includes a column holder for the column of your choice. The Educational HPLC can accommodate most HPLC columns up to 25cm long

(column sold separately on page 95). If in the future the user should desire to upgrade to a binary gradient system, all the necessary wiring is already included with the base isocratic system. The simple upgrade requires just a few screws and plumbing connections to add the second pump head and circuit board.



On the front of the Educational HPLC is a handy storage compartment with a rack for syringes and vials. Included in the storage compartment is an accessories kit with several small spare parts.

0210-0500

Educational HPLC System