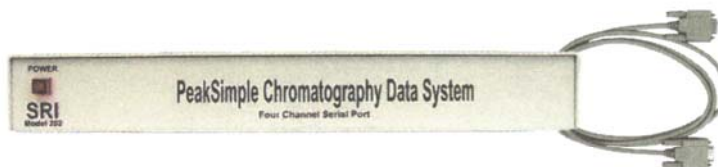
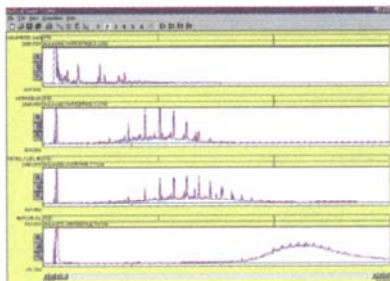


Model 202 Four Channel Data System

- **4 Channels, 2 separate Time Bases, 2 Remote Start Inputs**
- **Independent Start & Stop times for 2 separate instruments**
- **Easy Serial Port Connection to your Windows™ PC**
- **Includes PeakSimple Software**



The Model 202 can be mounted inside the 8610, 410 or 310 GCs and the 210 HPLC, or it can be mounted in a separate box, ready for connection to other manufacturers' GC or HPLC detectors. The Model 202 Data System consists of PeakSimple for Windows software and a four channel, 24-bit high resolution A/D board.

When mounted in an SRI GC, the Model 202 controls the column oven temperature program, and the pressure program of the carrier gas electronic pressure controller (EPC). When mounted in the Model 210 HPLC system, the Model 202 controls the pump speed and gradient profile. The eight available TTL outputs are connected internally within the GC or HPLC to control functions such as valve rotation, gas solenoid actuation, autosampler injection, etc.

When mounted in a separate box, the temperature, pressure, and gradient control outputs are available for use, but not connected to anything. The eight TTL outputs are wired to a bank of eight single-pole, dual-throw mechanical relays with screw terminals for easy connection to any user device which operates from a contact closure. Two remote start inputs allow run initiation from the user's GC or HPLC system.

The four channels of data can be randomly assigned to one of two time bases, which allows independent start and stop times for two entirely separate instruments. Data can be acquired at rates up to 50Hz with one channel active, 10Hz for two channels, or 5Hz with all four channels activated and acquiring data. Windows computers with two available serial ports can operate dual Model 202 systems, for a total of eight data channels and four time bases from a single PC platform. For computers with USB ports only, USB PDA/Serial Adaptors, which allow serial peripherals to interface with USB computers, are available for about \$40US.

8600-4055 Model 202 Four Channel Data System
8600-4255 Model 202, 220 VAC