

**Model C72**  
page 156

15,000 psi

10,000 psi

## NEW UHPLC Injectors and Switching Valves

New this year from VICI are UHPLC **Models C72X** and **C72H** valves, with pressure ratings of 15,000 psi and 10,000 psi, respectively. They can be used as injectors or switching valves.

Microbore **Models C74X** and **C74H** are equivalent internal volume sample injectors, with sample sizes ranging from 4 nanoliters to 50 nanoliters.

## HPLC Injectors and Switching Valves

### Microbore

**Model C2** valves can be used as injectors or switching valves.

**Model C4** is an internal volume sample injector with sample sizes ranging from 10 nl to 50 nl.

**Model C6** continuous flow injector is designed to maintain pump flow during most of the switching cycle, virtually eliminating pressure spikes.

**Model C1** is a through-the-handle (front-loading) injector designed for direct replacement of existing competitive models. All Model C1 injectors are manual, with position feedback standard.

**Model C1CF** is a 6 port through-the-handle continuous flow injector. An engraving on the stator maintains pump flow between ports 5 and 4 during most of the switching cycle, virtually eliminating pressure spikes. Because the handle is integral to the design, all Model C1CF valves are manual, with position feedback standard.

### Analytical

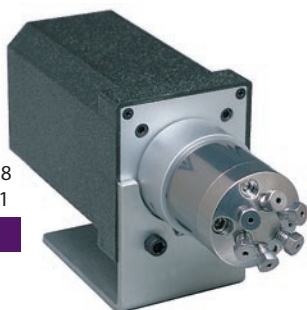
**Models C2, C6,** and **C1** are also available for analytical injection and switching, with port sizes of 0.40 mm (.016"). **Model C4** offers internal volume sample sizes ranging from 0.1 to 0.5 µl.

### Semi-Preparative HPLC

**Model C2** valves are available with flow passages optimized for semi-preparative HPLC. Choose from 4, 6, 8, or 10 port versions. Contact our sales or technical support departments for more information.

### Autosampler Replacements

We supply direct replacements for injectors in many popular autosamplers. Call technical support to determine which replacement is best for your application.



**Model C2**  
Microbore, page 158  
Analytical, page 161

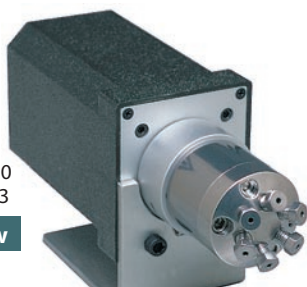
5,000 psi



**Model C4**  
Microbore, page 159  
Analytical, page 162

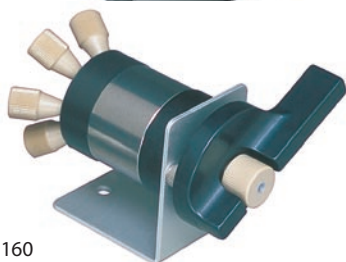
5,000 psi

Internal sample



**Model C6**  
Microbore, page 160  
Analytical, page 163

Continuous flow



**Model C1**  
Microbore, page 160  
Analytical, page 163

Through-handle