

Starter Kit, Low Pressure Plugs and Caps



Easy-Flange kit

The Easy-Flange flange-rolling tool uses mechanical force to form a flange on 1/16" - 1/8" OD PTFE tubing, offering an excellent non-electric alternative to the heated flanging tool.

The quality of the flange is excellent, since it is formed without stressing the tubing by heat. The specially designed negative conical profile of the flange-forming component yields an ideal shape for maximum sealing properties.

	<i>Prod No</i>	<i>Price</i>
Easy-Flange kit	JR-201540	
<i>Includes:</i>		
Plastic box		
Flanging discs with:		
0.5 mm SS pin for PEEK tubing		
0.8 mm polymer pin		
0.8 mm titanium pin		
1.3 mm polymer pin		
1.3 mm titanium pin		
Clean-cut tubing cutter		
PTFE tubing, 1/16" x 0.75 mm ID, 6 ft.		

Plugs

1/4-28

Plugs can be used to close off an unused port in a 1/4-28 valve or manifold.



	PEEK		CTFE	
<i>Package of 5:</i>	<i>Prod No</i>	<i>Price</i>	<i>Prod No</i>	<i>Price</i>
	CPPK		CPKF	

Low pressure PEEK plugs

10-32

These all-PEEK plugs are for use in Cheminert PEEK fittings and low pressure polymeric valves (C20Z and C30Z series). For high pressure polymeric valves (C1-C5 series), use plugs on page 64.

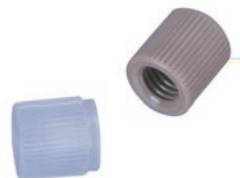


<i>Package of 1: Length of nut*</i>		PEEK	
		<i>Prod No</i>	<i>Price</i>
1/16" hex	.62"	MZP1PK	
1/16" long hex	.87"	LZP1PK	
1/16" fingertight	.88"	ZP1FPK	

Caps

1/4-28

Caps are used to close off lines with 1/4-28 tube end fittings.



<i>Package of 5:</i>	PEEK		CTFE	
	<i>Prod No</i>	<i>Price</i>	<i>Prod No</i>	<i>Price</i>
	CCPK-5		CCKF-5	

MORE INFORMATION

Clean-cut tubing cutter page 90
Tightening tool for hex-head PEEK nuts . . 67

0.25 mm = .010"
0.50 mm = .020"
0.75 mm = .030"
1.0 mm = .040"
1.5 mm = .060"
2.0 mm = .080"
4.6 mm = .180"
6.0 mm = .236"
6.4 mm = .253"
7.0 mm = .275"
10.0 mm = .400"
27.0 mm = 1.08"
1/32" = 0.8 mm
1/16" = 1.6 mm
1/8" = 3.2 mm
1/4" = 6.4 mm
3/8" = 9.5 mm
1/2" = 12.7 mm