

## Tools

As a convenience to our customers, we stock several standard tools that are useful for working with valves, fittings, and other products from VICI. In addition, we offer custom tools which are designed and machined in our factory to facilitate use of specific VICI products.

### Custom socket wrench

This 1/4" socket wrench with a slot to slip over 1/16" tubing is the perfect tool for installing fittings in some of our multiposition valves, in which the proximity of the ports makes it difficult to get a normal open end wrench in position.

Prod No  
SWH4



### Hex key set

The hex key set has a wrench to fit any socket head screw on any VICI valve or actuator. Includes .050", 1/16", 5/64", 3/32", 7/64", 1/8", 9/64", and 5/32" sizes.

Prod No  
HKS



### Open end wrenches

Size	For use with	Prod No
3/16" x 1/4"	1/32" and 1/16" nuts	OEW
3/8" x 7/16"	1/8" nuts	OEW-2
1/2" x 9/16"	1/4" nuts	OEW-3



### Pencil magnet

A pencil-type magnet is useful for removing the rotor from Valco valves when the rotor must be replaced or rotated. The process of disassembly and assembly is described in Technical Note 201, which may be requested by phoning or faxing. It may also be found in the support section at [www.vici.com](http://www.vici.com).

Prod No  
PM



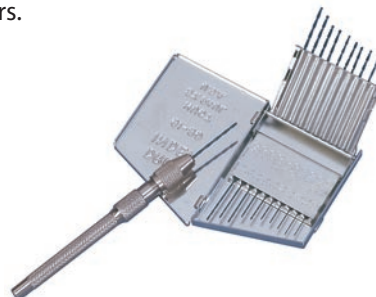
**MORE INFORMATION**  
Ferrule removal kit. . . . 54

**CHROMalytic TECHNOlogy Pty Ltd AUSTRALIAN Distributors e-mail: [sales@chromtech.net.au](mailto:sales@chromtech.net.au) Tel: 03 9762 2034**

**Pin vise and drill index**

The drill index has drills sized from 0.0135" to 0.039" (0.34 to 1 mm). These are useful tools when a fused silica tube breaks in a union, or for enlarging the inner diameter of fused silica adapters.

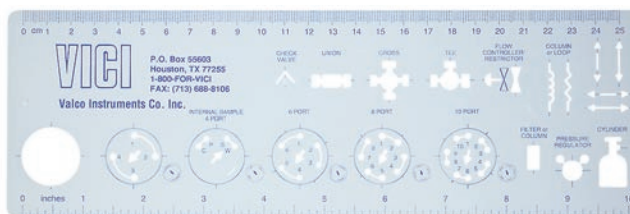
Prod No  
PV



**Template**

This tool is just what you need when you're working out plumbing and valve switching schematics. It features templates for two position valves with 4, 6, 8, and 10 ports with indications of both positions, as well as various flow symbols. For added convenience, the sides are edged with metric and inch rulers.

Prod No  
TEMPLATE1



**Valve spanner handle**

A special tool for gripping a multiposition valve body. It is especially useful during valve alignment procedures.

Prod No  
VSH

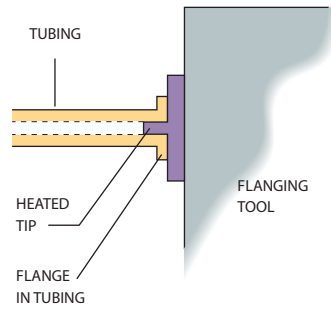


## Flanging Tool, Starter Kit

### Cheminert flanging tools

The flanging tool makes the flange which retains the standard 1/4-28 tube end fitting and washer on PTFE or FEP tubing. With this tool, lengths of tubing may be easily assembled to any required dimension. The time required is approximately 5 to 10 seconds per flange.

Flanging tools are available for 110 VAC or 230 VAC, and come complete with tips for 0.75 mm, 1.0 mm, and 2.00 mm ID tubing, a tubing holder for gripping the tubing during the flanging operation, a razor blade for tube cutting, and instructions.



Flange being made on tubing

	<i>Prod No</i>	<i>Price</i>
<b>Flanging tools</b> 110 VAC	CFT-110	
230 VAC	CFT-220	
<b>Flanging tool accessories</b>		
Flanging tips		
for tubing ID ≤ 0.25 mm	CFT-TXC	
for tubing ID ≤ 0.75 mm	CFT-TC	
for tubing ID ≤ 1.00 mm	CFT-TM	
for tubing ID ≤ 1.50 mm	CFT-TL	
for tubing ID ≤ 2.00 mm	CFT-TXL	
Razor blades ( <i>pkg /10</i> )	CFT-R	
Tubing holder	CFT-H	



### Cheminert starter kits

Starter kits come in either 1/16" or 1/8" versions, with flanging tools for 110 VAC or 230 VAC.

	<b>110 VAC</b>		<b>230 VAC</b>	
	<i>Prod No</i>	<i>Price</i>	<i>Prod No</i>	<i>Price</i>
<b>Starter kits</b>				
1/16" tubing	CFT1K-110		CFT1K-220	
1/8" tubing	CFT2K-110		CFT2K-220	

The starter kit includes:

- 1 flanging tool with 3 flanging tips
- 1 tubing holder
- 20 standard tube end fittings
- 20 stainless steel washers
- 10 couplings
- 20 feet of PTFE tubing  
(1/16" OD x 0.030" ID  
or  
1/8" OD x .060" ID)
- 1 male luer adapter
- 1 female luer adapter
- 1 plug
- 1 tee
- 1 glass connector



**MORE INFORMATION**

Standard tube end fittings ..... page 69

Stainless steel washers ..... 69

Couplings ..... 72

Male luer adapter..... 76

Female luer adapter ... 76

Plug..... 71

Tee ..... 74

Glass connector ..... 75

**Starter Kit, Low Pressure Plugs and Caps**



**Easy-Flange kit**

The Easy-Flange flange-rolling tool uses mechanical force to form a flange on 1/16" - 1/8" OD PTFE tubing, offering an excellent non-electric alternative to the heated flanging tool.

The quality of the flange is excellent, since it is formed without stressing the tubing by heat. The specially designed negative conical profile of the flange-forming component yields an ideal shape for maximum sealing properties.

	<i>Prod No</i>	<i>Price</i>
Easy-Flange kit	JR-201540	
<i>Includes:</i>		
Plastic box		
Flanging discs with:		
0.5 mm SS pin for PEEK tubing		
0.8 mm polymer pin		
0.8 mm titanium pin		
1.3 mm polymer pin		
1.3 mm titanium pin		
Clean-cut tubing cutter		
PTFE tubing, 1/16" x 0.75 mm ID, 6 ft.		

**Plugs**

1/4-28

Plugs can be used to close off an unused port in a 1/4-28 valve or manifold.



	<b>PEEK</b>		<b>CTFE</b>	
<i>Package of 5:</i>	<i>Prod No</i>	<i>Price</i>	<i>Prod No</i>	<i>Price</i>
	CPPK		CPKF	

**Low pressure PEEK plugs**

10-32

These all-PEEK plugs are for use in Cheminert PEEK fittings and low pressure polymeric valves (C20Z and C30Z series). For high pressure polymeric valves (C1-C5 series), use plugs on page 64.

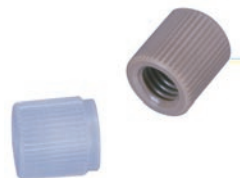


<i>Package of 1: Length of nut*</i>		<b>PEEK</b>	
		<i>Prod No</i>	<i>Price</i>
1/16" hex	.62"	MZP1PK	
1/16" long hex	.87"	LZP1PK	
1/16" fingertight	.88"	ZP1FPK	

**Caps**

1/4-28

Caps are used to close off lines with 1/4-28 tube end fittings.



<i>Package of 5:</i>	<b>PEEK</b>		<b>CTFE</b>	
	<i>Prod No</i>	<i>Price</i>	<i>Prod No</i>	<i>Price</i>
	CCPK-5		CCKF-5	

**MORE INFORMATION**

Clean-cut tubing cutter ..... page 90  
Tightening tool for hex-head PEEK nuts... 67

0.25 mm = .010"
0.50 mm = .020"
0.75 mm = .030"
1.0 mm = .040"
1.5 mm = .060"
2.0 mm = .080"
4.6 mm = .180"
6.0 mm = .236"
6.4 mm = .253"
7.0 mm = .275"
10.0 mm = .400"
27.0 mm = 1.08"
1/32" = 0.8 mm
1/16" = 1.6 mm
1/8" = 3.2 mm
1/4" = 6.4 mm
3/8" = 9.5 mm
1/2" = 12.7 mm