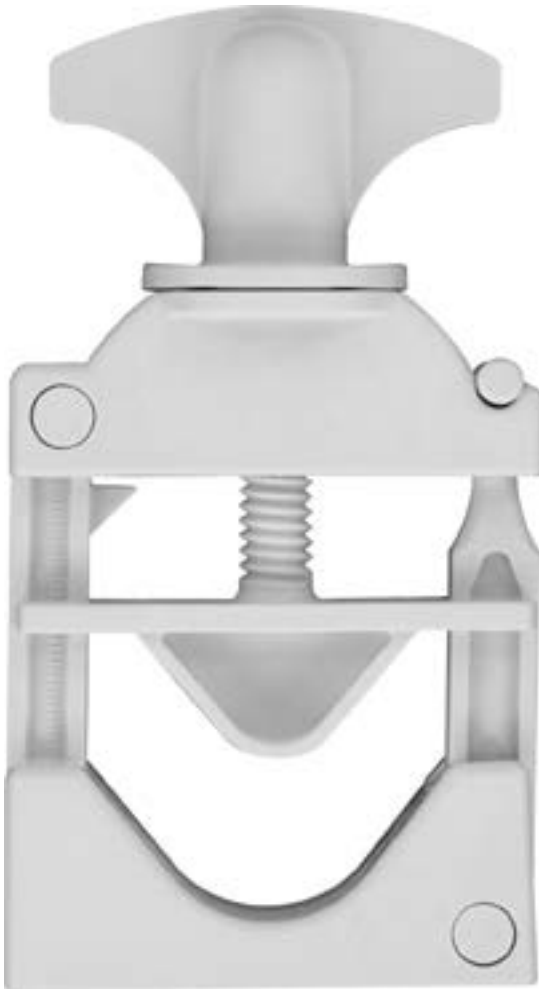


**VBV1000NW (Glass Reinforced White Nylon)**

Pinch Valve, Maxi, 1/2" (12.7 mm) to 1" (25.4 mm)

**VNG150WHT (Glass Reinforced White Nylon)**

Clamp, Maxi Flange, 1" (25.4 mm) to 1.5" (38.1 mm)

**VNG300WHT (Glass Reinforced White Nylon)**

Clamp, Maxi Flange, 3" (76.2 mm)

BIOPROCESS  
FITTINGS

- 001 (various, see part description)
- 06 Orange Nylon
- 07 Yellow Nylon
- 0 Natural Nylon
- 1 White Nylon
- 2 Black Nylon
- 3 Red Nylon
- 4 Green Nylon
- 5 Blue Nylon
- 7 Glass Filled Natural Nylon
- 8 Gray Nylon
- 8B Gray Nylon
- 9 Clear Polycarbonate
- 10 Acetal
- 40 Polysulfone
- 81 Lace White ABS
- 91 White Polycarbonate
- 1006 Natural Acetal
- 1007 Black Acetal
- 6005 Animal-Free Polypropylene
- 6006 White Polypropylene
- 8003 Natural ABS
- 8012 White ABS
- 9002 Rad. Stable Polycarbonate
- 9010 Rad. Stable Polycarbonate
- B Buna-N O-ring
- CM030 Dark Blue Nylon
- E PTEE/EPDM
- EP EPDM O-ring
- J1A Natural Kynar PVDF
- J1A2 Black Kynar PVDF
- PX Platinum-Cured Silicone
- U71 White Class VI Glass Filled Nylon
- U75 Blue Class VI Glass Filled Nylon
- VP1 Animal-free Polyethylene
- X2 Buna-N Rubber
- XO Stainless Steel

## Resin Reference

- Pg 82 Chemical Resistance
- Pg 83 Regulatory Status
- Pg 84 Sterilization Stability
- Pg 85 Typical Properties