

PANEL MOUNTS:

Female Lug Style and Male Luer

FTLB210 (-1 -6005 -9 -J1A)

Female Luer Lug Style Panel Mount 1/4-28 UNF to 200 Series Barb, 1/16" (1.6 mm) ID Tubing



FTLB220 (-1 -6005 -9 -J1A)

Female Luer Lug Style Panel Mount 1/4-28 UNF to 200 Series Barb, 3/32" (2.4 mm) ID Tubing



FTLB230 (-1 -6005 -9 -J1A)

Female Luer Lug Style Panel Mount 1/4-28 UNF to 200 Series Barb, 1/8" (3.2 mm) ID Tubing



MLRLB210 (-1 -6005)

Male Luer Panel Mount 10-32 UNF to 200 Series Barb, 1/16" (1.6 mm) ID Tubing, (May be used with separate rotating lock ring; FSLLR)



MLRLB220 (-1 -6005)

Male Luer Panel Mount 10-32 UNF to 200 Series Barb, 3/32" (2.4 mm) ID Tubing, (May be used with separate rotating lock ring; FSLLR)



MLRLB230 (-1 -6005)

Male Luer Panel Mount 1/4-28 UNF to 200 Series Barb, 1/8" (3.2 mm) ID Tubing, (May be used with separate rotating lock ring; FSLLR)



PANEL MOUNT ACCESSORIES: Lock Nuts and Color Coding Rings

CCR (-1 -2 -3 -4 -5 -06 -07)

Color Coded Ring (For use with PMS, PMK, FTLLB or FTLB panel mount fittings)



CCLR (-1 -2 -3 -4 -5 -06 -07)

Color Coded Lock Ring (For use with PMS, PMK, FTLLB or FTLB panel mount fittings)



PMKN (-XO)

Panel Mount Nut 10-32 UNF with 3/8" Hex (For use with PMK panel mount fittings)



PMSN (-XO)

Panel Mount Nut 1/4-28 UNF with 7/16" Hex (For use with PMS, FTLB, and FTLLB panel mount fittings)



LNS (-1 -2 -3 -4 -5 -06 -07 -6005 -81 -J1A)

1/4-28 UNF Panel Mount Lock Nut (For use with PMS, FTLLB or FTLB panel mount fittings)



35

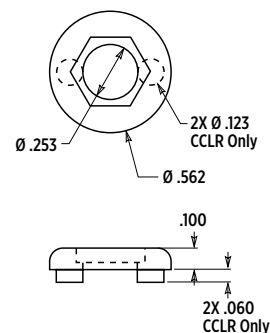
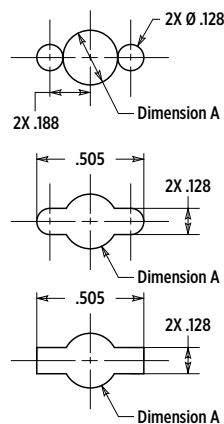
Material Reference

- 001 (various, see part description)
- 06 Orange Nylon
- 07 Yellow Nylon
- 0 Natural Nylon
- 1 White Nylon
- 2 Black Nylon
- 3 Red Nylon
- 4 Green Nylon
- 5 Blue Nylon
- 7 Glass Filled Natural Nylon
- 8 Gray Nylon
- 8B Gray Nylon
- 9 Clear Polycarbonate
- 10 Acetal
- 40 Polysulfone
- 81 Lace White ABS
- 91 White Polycarbonate
- 1006 Natural Acetal
- 1007 Black Acetal
- 6005 Animal-Free Polypropylene
- 6006 White Polypropylene
- 8003 Natural ABS
- 8012 White ABS
- 9002 Rad. Stable Polycarbonate
- 9010 Rad. Stable Polycarbonate
- B Buna-N O-ring
- CM030 Dark Blue Nylon
- E PTEE/EPDM
- EP EPDM O-ring
- J1A Natural Kynar PVDF
- J1A2 Black Kynar PVDF
- PX Platinum-Cured Silicone
- U71 White Class VI Glass Filled Nylon
- U75 Blue Class VI Glass Filled Nylon
- VP1 Animal-free Polyethylene
- X2 Buna-N Rubber
- XO Stainless Steel

LUER FITTINGS

Select the correct lock nut for your panel mount:

PART	Dimension A	Use Lock Nut
FTLLB Series	.255"	PMSN or LNS
FTLB Series	.255"	PMSN or LNS
FTLLBMLRL	.255"	PMSN or LNS
MLRLB210	.193"	PMKN
MLRLB220	.193"	PMKN
MLRLB230	.255"	PMSN or LNS



Resin Reference

- Pg 82 Chemical Resistance
- Pg 83 Regulatory Status
- Pg 84 Sterilization Stability
- Pg 85 Typical Properties