

**U10 (-1-2-7-9)**

Ultrasonically Weldable Fitting to Classic Series Barb, 1/16" (1.6 mm) ID Tubing

**U20 (-1-2-7)**

Ultrasonically Weldable Fitting to Classic Series Barb, 3/32" (2.4 mm) ID Tubing

**U30 (-1-2-7)**

Ultrasonically Weldable Fitting to Classic Series Barb, 1/8" (3.2 mm) ID Tubing

**TUBE-TO-TUBE PANEL MOUNTS:**  
Straight Through and Reducer**PMK210 (-1-6005)**

Panel Mount Connector 10-32 UNF to 200 Series Barbs, 1/16" (1.6 mm) ID Tubing

**PMK220 (-1-6005)**

Panel Mount Connector 10-32 UNF to 200 Series Barbs, 3/32" (2.4 mm) ID Tubing

**PMS230 (-1-6005)**

Panel Mount Connector 1/4-28 UNF to 200 Series Barbs, 1/8" (3.2 mm) ID Tubing

**PMK220-210 (-1-6005)**

Panel Mount Reduction Connector 10-32 UNF to 200 Series Barbs, 3/32" (2.4 mm) and 1/16" (1.6 mm) ID Tubing

**PMS230-210 (-1-6005-J1A)**

Panel Mount Reduction Connector 1/4-28 UNF to 200 Series Barbs, 1/8" (3.2 mm) and 1/16" (1.6 mm) ID Tubing

**PMS230-220 (-1-6005)**

Panel Mount Reduction Connector 1/4-28 UNF to 200 Series Barbs, 1/8" (3.2 mm) and 3/32" (2.4 mm) ID Tubing

**CCR (-1-2-3-4-5-06-07)**

Color Coded Ring (For use with PMS, PMK, FTLLB or FTLB panel mount fittings)

**CCLR (-1-2-3-4-5-06-07)**

Color Coded Lock Ring (For use with PMS, PMK, FTLLB or FTLB panel mount fittings)

**PMKN (-XO)**

Panel Mount Nut 10-32 UNF with 3/8" Hex (For use with PMK panel mount fittings)

**PMSN (-XO)**

Panel Mount Nut 1/4-28 UNF with 7/16" Hex (For use with PMS, FTLB, and FTLLB panel mount fittings)

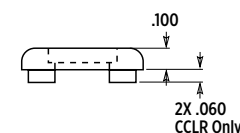
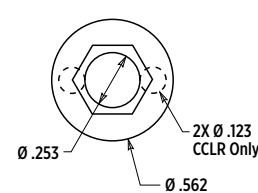
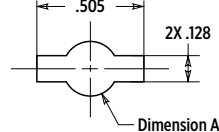
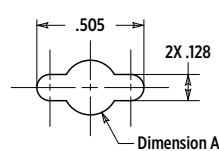
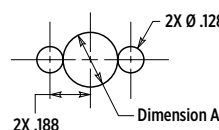
**LNS (-1-2-3-4-5-06-6005-07-81-J1A)**

1/4-28 UNF Panel Mount Lock Nut (For use with PMS, FTLLB or FTLB panel mount fittings)



Select the correct lock nut for your panel mount:

PART	Dimension A	Use Lock Nut
PMK Series	.193"	PMKN
PMS Series	.255"	PMSN or LNS



TUBE-TO-TUBE FITTINGS

- 001 (various, see part description)
- 06 Orange Nylon
- 07 Yellow Nylon
- 0 Natural Nylon
- 1 White Nylon
- 2 Black Nylon
- 3 Red Nylon
- 4 Green Nylon
- 5 Blue Nylon
- 7 Glass Filled Natural Nylon
- 8 Gray Nylon
- 8B Gray Nylon
- 9 Clear Polycarbonate
- 10 Acetal
- 40 Polysulfone
- 81 Lace White ABS
- 91 White Polycarbonate
- 1006 Natural Acetal
- 1007 Black Acetal
- 6005 Animal-Free Polypropylene
- 6006 White Polypropylene
- 8003 Natural ABS
- 8012 White ABS
- 9002 Rad. Stable Polycarbonate
- 9010 Rad. Stable Polycarbonate
- B Buna-N O-ring
- CM030 Dark Blue Nylon
- E PTEE/EPDM
- EP EPDM O-ring
- J1A Natural Kynar PVDF
- J1A2 Black Kynar PVDF
- PX Platinum-Cured Silicone
- U71 White Class VI Glass Filled Nylon
- U75 Blue Class VI Glass Filled Nylon
- VP1 Animal-free Polyethylene
- X2 Buna-N Rubber
- XO Stainless Steel

## Resin Reference

- Pg 82 Chemical Resistance
- Pg 83 Regulatory Status
- Pg 84 Sterilization Stability
- Pg 85 Typical Properties