

SANITARY FITTING:

Maxi Flange

Material Suffix Key

-6005 Animal-Free Natural Polypropylene

-E PTEE/EPDM

-J1A Natural PVDF

-PX Platinum-Cured Silicon

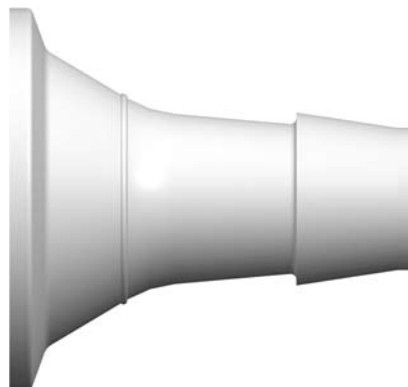
SFMX655 (-6005 - J1A)

Sanitary Fitting, Maxi Flange to 600 Series Barb, 1/4" (6.4 mm) Tubing ID



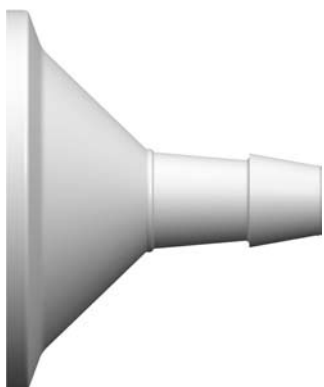
SFMX6100 (-6005 - J1A)

Sanitary Fitting, Maxi Flange to 600 Series Barb, 3/4" (19.0 mm) Tubing ID



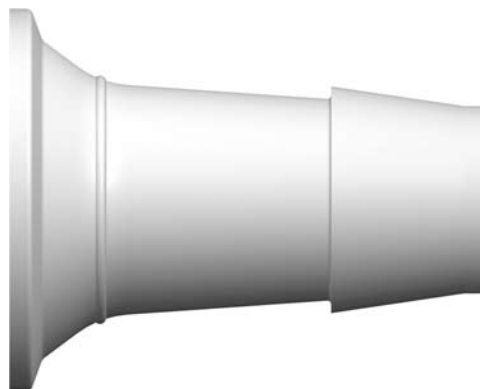
SFMX670 (-6005 - J1A)

Sanitary Fitting, Maxi Flange to 600 Series Barb, 3/8" (9.5 mm) Tubing ID



SFMX6110 (-6005 - J1A)

Sanitary Fitting, Maxi Flange to 600 Series Barb, 1.0" (25.4 mm) Tubing ID



SFMX680 (-6005 - J1A)

Sanitary Fitting, Maxi Flange to 600 Series Barb, 1/2" (12.7 mm) Tubing ID



our online ordering for component parts, now available 24 hours a day, 7 days a week, with no \$ minimums! You can find every catalog part at:

www.valueplastics.com

(Online ordering is not available in countries served by our regional partners)

Website : www.chromtech.net.au E-mail : info@chromtech.net.au TelNo : 03 9762 2034 . . . in AUSTRALIA



VALUE PLASTICS, INC.

HRM *alytic* +61(0)3 9762 2034
ECH *nology* Pty Ltd

Australian Distributors:
Importers & Manufacturers