

Material Suffix Key

- | | | | |
|--------------------------|--------------------------------------|--------------------------------------|-------------------------|
| -1 White Nylon | -10 Acetal | -2 Black Nylon | -3 Red Nylon |
| -4 Green Nylon | -5 Blue Nylon | -06 Orange Nylon | -07 Yellow Nylon |
| -6 Natural Polypropylene | -6005 Animal-Free Polypropylene | -8003 Natural ABS | -81 Lace White ABS |
| -9 Clear Polycarbonate | -9002 Radiation Stable Polycarbonate | -9010 Radiation Stable Polycarbonate | -J1A Natural Kynar PVDF |

Y210 (-1 -2 -6 -9 -J1A)

Y Connector with 200 Series Barbs, 1/16" (1.6 mm) ID Tubing



Y410 (-1 -2 -6 -J1A)

Y Connector with 400 Series Barbs, 1/16" (1.6 mm) ID Tubing



Y220 (-1 -2 -6 -9 -J1A)

Y Connector with 200 Series Barbs, 3/32" (2.4 mm) ID Tubing



Y420 (-1 -2 -6 -J1A)

Y Connector with 400 Series Barbs, 3/32" (2.4 mm) ID Tubing



Y230 (-1 -2 -3 -6 -9 -9010 -J1A)

Y Connector with 200 Series Barbs, 1/8" (3.2 mm) ID Tubing



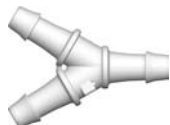
Y430 (-1 -2 -6 -J1A)

Y Connector with 400 Series Barbs, 1/8" (3.2 mm) ID Tubing



Y013 (-6005)

Y Connector with 500 Series Barbs, 1/8" (3.2 mm) ID Tubing



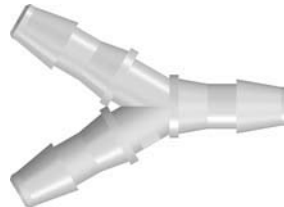
Y240 (-1 -2 -6 -9 -J1A)

Y Connector with 200 Series Barbs, 5/32" (4.0 mm) ID Tubing



Y250 (-1 -2 -6 -9 -9002 -J1A)

Y Connector with 200 Series Barbs, 3/16" (4.8 mm) ID Tubing



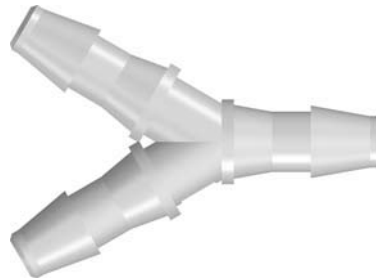
Y450 (-1 -2 -6 -J1A)

Y Connector with 400 Series Barbs, 3/16" (4.8 mm) ID Tubing



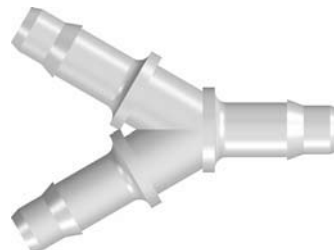
Y260 (-1 -2 -6 -9 -9002 -J1A)

Y Connector with 200 Series Barbs, 1/4" (6.4 mm) ID Tubing



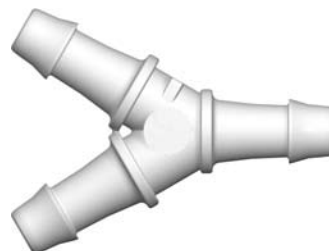
Y460 (-1 -2 -6 -9 -J1A)

Y Connector with 400 Series Barbs, 1/4" (6.4 mm) ID Tubing



Y055 (-6005)

Y Connector with 500 Series Barbs, 1/4" (6.4 mm) ID Tubing



VALUE PLASTICS, INC.

HRM *alytic* +61(0)3 9762 2034
EChnology Pty Ltd

Australian Distributors:
Importers & Manufacturers: