

Internal sample injectors, 1/32" fittings, 0.25 mm ports (.010")


W Type

Med temp
Internal sample
1/32" 0.25 mm

Includes 2" standoff. Manual version is not available without standoff.

Standard electric actuator:
 110 VAC for USA;
 110/230 VAC to 24 VDC power supply for international

Microelectric actuator:
 24 VDC, with 110/230 VAC to 24 VDC power supply



SPECS
1000 psi liq
175°C max
 Nitronic 60 valve body
 Valcon E rotor

Sample volume	.06 µl		.1 µl		.2 µl		.5 µl	
	Prod No	Price	Prod No	Price	Prod No	Price	Prod No	Price
Manual with standoff	2NI4WE.06	\$775	2NI4WE.1		2NI4WE.2		2NI4WE.5	
With air actuator	A2NI4WE.06		A2NI4WE.1		A2NI4WE.2		A2NI4WE.5	
With standard electric actuator	E2NI4WE.06		E2NI4WE.1		E2NI4WE.2		E2NI4WE.5	
With microelectric actuator	EP2NI4WE.06		EP2NI4WE.1		EP2NI4WE.2		EP2NI4WE.5	
Replacement valve	DNI4WE.06		DNI4WE.1		DNI4WE.2		DNI4WE.5	
Replacement rotor	SSANI4WE.06		SSANI4WE.1		SSANI4WE.2		SSANI4WE.5	

OPTIONS

- 3", 4", and 6" standoffs
- Materials: Hastelloy C, Inconel 600, Monel 400, Nickel 200, Nitronic 50, Titanium, Zirconium (see pages 254-255)

Internal sample injectors, 1/16" fittings, 0.40 mm ports (.016")


W Type

Med temp
Internal sample
1/16" 0.40 mm

Includes 2" standoff. Manual version has no standoff.

Standard electric actuator:
 110 VAC for USA;
 110/230 VAC to 24 VDC power supply for international

Microelectric actuator:
 24 VDC, with 110/230 VAC to 24 VDC power supply

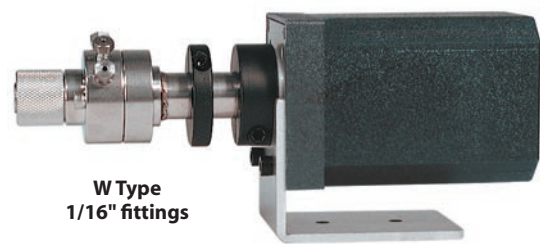


SPECS
1000 psi liq
175°C max
 Nitronic 60 valve body
 Valcon E rotor

Sample volume	.06 µl		.1 µl		.2 µl		.5 µl	
	Prod No	Price	Prod No	Price	Prod No	Price	Prod No	Price
Manual	C14WE.06		C14WE.1		C14WE.2		C14WE.5	
Manual with standoff	2C14WE.06		2C14WE.1		2C14WE.2		2C14WE.5	
With air actuator	A2C14WE.06		A2C14WE.1		A2C14WE.2		A2C14WE.5	
With standard electric actuator	E2C14WE.06		E2C14WE.1		E2C14WE.2		E2C14WE.5	
With microelectric actuator	EP2C14WE.06		EP2C14WE.1		EP2C14WE.2		EP2C14WE.5	
Replacement valve	DC14WE.06		DC14WE.1		DC14WE.2		DC14WE.5	
Replacement rotor	SSAC14WE.06		SSAC14WE.1		SSAC14WE.2		SSAC14WE.5	

OPTIONS

- 3", 4", and 6" standoffs
- Materials: Hastelloy C, Inconel 600, Monel 400, Nickel 200, Nitronic 50, Titanium, Zirconium (see pages 254-255)



W Type
1/16" fittings

MORE INFORMATION

Actuators
 Air page 195
 Manual 204
 Microelectric .. 188-189
 Standard elec. 193

Materials
 Metals 254-255
 Polymers 256
 Valve rotors. 257

Standoff assemblies 205