



Cheminert® Injectors and Valves

- Pressure ratings from 100 psi to 20,000 psi
- Inert, biocompatible construction
- Easy field service
- Automated operation – pneumatic or electric
- 4, 6, 8, and 10 port and internal sample two position models
- Multiposition stream selection versions with up to 26 positions

Design

The basic Cheminert design involves a flat rotor which is engraved with slots which connect the ports. A stator is held at a constant, preset force against the rotor. When repairs are required, all that is necessary for rotor access is the removal of two or three screws. Remove the old rotor and replace it, put the screws back in and tighten them, and the valve is ready for use at the factory-set pressure specification. No adjustments are possible, much less required. Other advantages of the design include easy panel mounting, low actuating torque, and compact size. The flat plate design offers flow paths for basic flow switching, sample injection, and stream selection up to 10 positions (26 positions in some models).

Two position valve descriptions, product numbers, and prices begin on page 146.

Selector (multiposition valve) information may be found on pages 150-151.

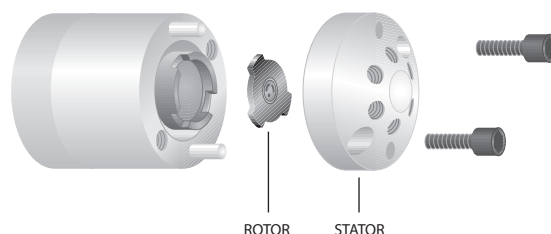
OEM injectors and selectors are on pages 178-185.

Materials of Construction

UHPLC models have stators of specially coated stainless steel, with PAEK rotors. **HPLC** models have stators of Nitronic 60 stainless steel, PAEK, Hastelloy C, or titanium, all of which are compatible with common HPLC solvents. Many are available with a proprietary long-life coating. Valcon H rotors are used with metal stators, and Valcon E with PAEK. **Low pressure** models have PPS stators and rotors of Valcon E2, a proprietary reinforced PTFE composite.

Metal valves are supplied with stainless nuts, with ferrules of the same material as the stator. Fittings for polymeric valves vary with the valve design. The valve price lists contain more detailed information.

Sample injection loops are available in a variety of materials, and are found on the pages with their corresponding valves.



TECH TIP

For optimal zero dead volume connections, make sure your tubing meets the best industry standards. OD tolerance should be nominal dimension $\pm .002$ ".

Fractional dimension	Nominal dimension
1/32"	.031
1/16"	.062
1/8"	.125
1/4"	.250
3/8"	.375
1/2"	.500

CHROMalytic TECHNOlogy Pty Ltd AUSTRALIAN Distributors e-mail: sales@chromtech.net.au Tel: 03 9762 2034