

Model C72
page 156

15,000 psi

10,000 psi

NEW UHPLC Injectors and Switching Valves

New this year from VICI are UHPLC **Models C72X** and **C72H** valves, with pressure ratings of 15,000 psi and 10,000 psi, respectively. They can be used as injectors or switching valves.

Microbore **Models C74X** and **C74H** are equivalent internal volume sample injectors, with sample sizes ranging from 4 nanoliters to 50 nanoliters.

HPLC Injectors and Switching Valves

Microbore

Model C2 valves can be used as injectors or switching valves.

Model C4 is an internal volume sample injector with sample sizes ranging from 10 nl to 50 nl.

Model C6 continuous flow injector is designed to maintain pump flow during most of the switching cycle, virtually eliminating pressure spikes.

Model C1 is a through-the-handle (front-loading) injector designed for direct replacement of existing competitive models. All Model C1 injectors are manual, with position feedback standard.

Model C1CF is a 6 port through-the-handle continuous flow injector. An engraving on the stator maintains pump flow between ports 5 and 4 during most of the switching cycle, virtually eliminating pressure spikes. Because the handle is integral to the design, all Model C1CF valves are manual, with position feedback standard.

Analytical

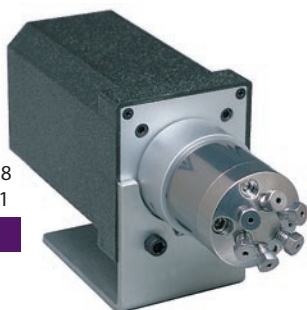
Models C2, C6, and **C1** are also available for analytical injection and switching, with port sizes of 0.40 mm (.016"). **Model C4** offers internal volume sample sizes ranging from 0.1 to 0.5 µl.

Semi-Preparative HPLC

Model C2 valves are available with flow passages optimized for semi-preparative HPLC. Choose from 4, 6, 8, or 10 port versions. Contact our sales or technical support departments for more information.

Autosampler Replacements

We supply direct replacements for injectors in many popular autosamplers. Call technical support to determine which replacement is best for your application.



Model C2
Microbore, page 158
Analytical, page 161

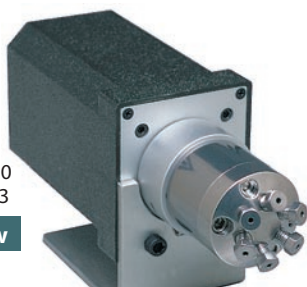
5,000 psi



Model C4
Microbore, page 159
Analytical, page 162

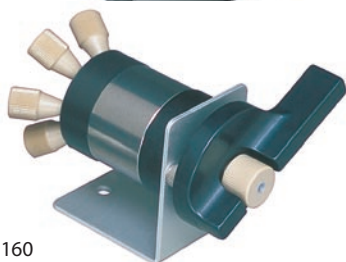
5,000 psi

Internal sample



Model C6
Microbore, page 160
Analytical, page 163

Continuous flow



Model C1
Microbore, page 160
Analytical, page 163

Through-handle