

Analytical through-the-handle injector, 1/16" Valco fittings, 0.40 mm ports (.016")

Model C1

SPECS

5000 psi liq
75°C max
Metal stator
Valcon H rotor

5000 psi liq
50°C max
PAEK stator
Valcon E rotor

Available only in manual version. Position feedback included.

Includes stainless steel nuts and ferrules. Valves with PAEK stators have PEEK nuts and ferrules.

Includes one 20 µl loop of the stator material.



5,000 psi

Analytical

Through-handle

1/16" 0.40 mm

OPTIONS

- Titanium stator available.
- 0.25 mm bore (.010") on page 160.

6 port injector
Replacement rotor
Replacement stator

N60 stainless stator

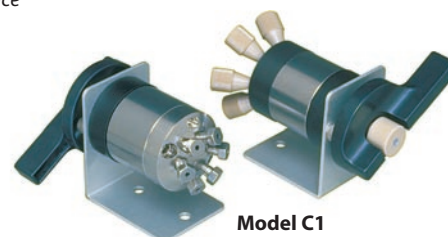
Prod No *Price*
C1-2006
C1-20R6
C-2C06

PAEK stator

Prod No *Price*
C1-2346
C1-23R6
C-2C46

Prod No *Price*

C-261



Model C1 and C1CF
1/16" ZDV fittings

Analytical continuous flow through-the-handle injector, 1/16" Valco fittings, 0.40 mm ports (.016")

Model C1CF

SPECS

5000 psi liq
75°C max
Metal stator
Valcon H rotor

5000 psi liq
50°C max
PAEK stator
Valcon E rotor

Available only in manual version. Position feedback included.

Includes stainless steel nuts and ferrules. Valves with PAEK stators have PEEK nuts and ferrules.

Includes one 20 µl loop of the stator material.



5,000 psi

Analytical

Continuous flow

Through-handle

1/16" 0.40 mm

OPTIONS

- 0.25 mm bore (.010") on page 160.

6 port injector
Replacement rotor
Replacement stator
Prod No

N60 stainless stator

Prod No *Price*
C1CF-2006
C1-20R6
C6-2C06
Price

PAEK stator

Prod No *Price*
C1CF-2346
C1-23R6
C6-2C46

C-261



Analytical continuous flow injector, 1/16" Valco fittings, 0.40 mm ports (.016")

Model C6

SPECS

5000 psi liq
75°C max
Metal stator
Valcon H rotor

5000 psi liq
50°C max
PAEK stator
Valcon E rotor

Includes stainless steel nuts and ferrules.

Includes a 20 µl loop of the stator material.

Standard electric actuator: 110 VAC for USA 110/230 VAC to 24 VDC power supply for international.

Microelectric actuator: 24 VDC, with 110/230 VAC to 24 VDC power supply.

5,000 psi

Analytical

Continuous flow

1/16" 0.40 mm

Manual
With pneumatic actuator
With standard electric actuator
With microelectric actuator
Replacement valve
Replacement rotor
Replacement stator

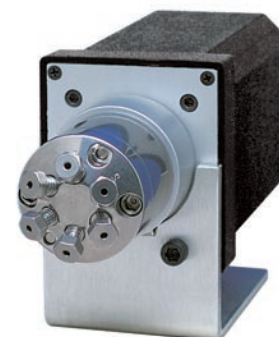
N60 stainless stator

Prod No *Price*
C6-2006
C6-2006A
C6-2006E
C6-2006EH
C6-2006D
C2-20R6
C6-2C06

PAEK stator

Prod No *Price*
C6-2346
C6-2346A
C6-2346E
C6-2346EH
C6-2346D
C2-23R6
C6-2C46

Order loops from page 159.



Model C6
1/16" ZDV fittings

C1CF and C6 CONTINUOUS FLOWPATH

An engraving on the stator maintains pump flow between ports 5 and 4 during most of the switching cycle, virtually eliminating pressure spikes.

