

Low Pressure

Internal sample injectors, 1/16" Valco ZDV fittings, 0.40 mm ports (.016")

Model C24Z

- Low pressure
- Internal sample
- 10-32 ZDV
- 1/16" 0.40 mm



Includes Valco ZDV PEEK nuts and ferrules.

Standard electric actuator:
110 VAC for USA
110/230 VAC to 24 VDC power supply for international.

Microelectric actuator:
24 VDC, with 110/230 VAC to 24 VDC power supply.

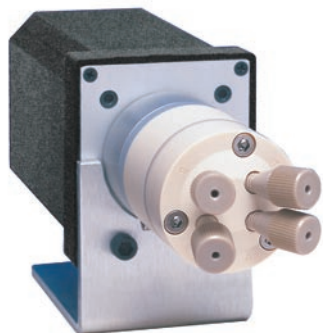
SPECS

100 psi gas/ 250 psi liq
75°C max
PPS stator
Valcon E2 rotor

Sample volume	0.2 µl		0.5 µl		1 µl	
	Prod No	Price	Prod No	Price	Prod No	Price
Manual	C24Z-2184-.2		C24Z-2184-.5		C24Z-2184-1	
With pneumatic actuator	C24Z-2184-.2A		C24Z-2184-.5A		C24Z-2184-1A	
With standard electric actuator	C24Z-2184-.2E		C24Z-2184-.5E		C24Z-2184-1E	
With microelectric actuator	C24Z-2184-.2EH		C24Z-2184-.5EH		C24Z-2184-1EH	
Replacement valve	C24Z-2184-.2D		C24Z-2184-.5D		C24Z-2184-1D	
Replacement rotor	C24-10R-.2		C24-10R-.5		C24-10R-1	
Replacement stator	C24Z-1C8		C24Z-1C8		C24Z-1C8	

OPTIONS

- 2.0 µl sample volumes are also available.
- Purge option. *See more information below.*
- Other polymeric rotors and stators are available. Consult the factory for prices and information.



Model C24Z
1/16" ZDV fittings

PURGE OPTION

The purge option permits a flow of liquid or gas to flush the valve interior of potentially toxic or corrosive components. We recommend this option for applications using materials (such as salt solutions) that could damage the metal parts of the valve.

Consult our technical staff for details.

MORE INFORMATION

Actuators	
.....	page 195
Microelectric ..	188-189
Standard electric ...	193
Materials	
.....	254-255
.....	256
Metals
Polymers	257
Standoff	
Valve rotors....	205-207
assemblies	