

HPLC column selector system with 1/16" Valco ZDV fittings, 0.40 mm ports (.016")

Model C5

SPECS

5000 psi liq
75°C max
Metal stator
Valcon H rotor

5000 psi liq
50°C max
PAEK stator
Valcon E rotor

The system comprises two stream selection valves mounted on a single microelectric actuator, which can be controlled manually, via remote logic level signal, or by RS-232 interface (RS-485 optional). See plumbing diagram below.

Includes stainless steel nuts and ferrules of the stator material.

Valves with PEEK stators have PEEK nuts and ferrules.

Includes microelectric actuator: 24 VDC, with 110/230 VAC to 24 VDC power supply.

5,000 psi

Column selector system

10-32 ZDV

1/16" 0.40 mm

OPTIONS

- 2", 3", 4", and 6" standoffs
- Hastelloy C stator
- Optional 0.25 mm (.010") bore available
- Optional 0.75 mm (.030") bore for Prep HPLC available

N60 stainless stator

System

Replacement valve
Replacement rotor
Replacement stator*

PAEK stator

System

Replacement valve
Replacement rotor
Replacement stator*

6 Column

Prod No Price

C5-2006EMTD

C5-2006D

C5-20R6

C5-2C06

8 Column

Prod No Price

C5H-2008EMTD

C5H-2008D

C5-20R8H

C5-2C08H

10 Column

Prod No Price

C5H-2000EMTD

C5H-2000D

C5-20R0H

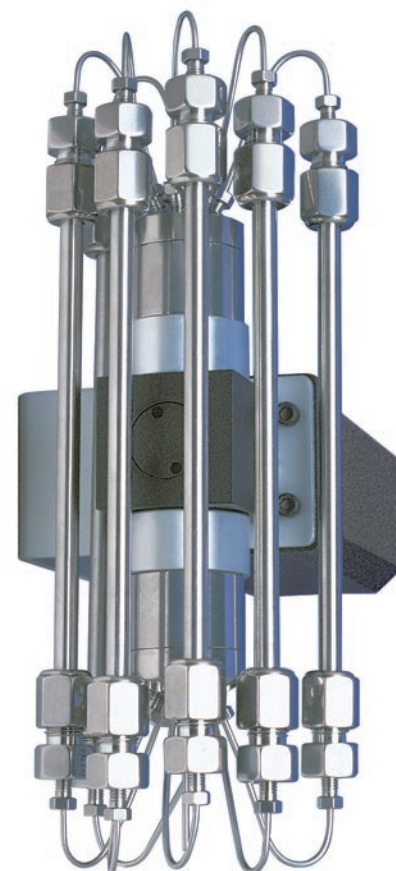
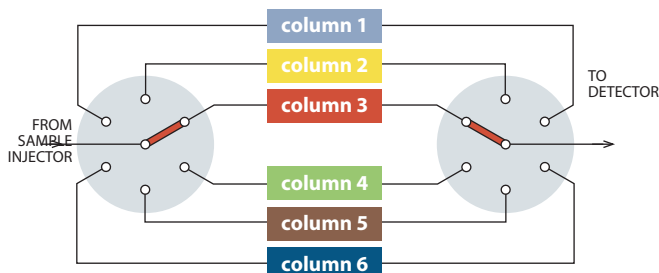
C5-2C00H

* See note on ordering stators, below.

RS-232 interface cable

Prod No Price

I-22697



Model C5 system

Columns not included

MORE INFORMATION

Actuators

- Air page 194
- Microelectric .. 190-191
- Standard electric ... 193
- Loop fill port assembly 41
- Materials
- Metals..... 254-255
- Polymers 256
- Valve rotors..... 257
- Standoff assemblies 205-207

ORDERING STATORS

Valves for dual drive assemblies have mirror image stators. Consult Technical Support for correct product number before ordering.

Both valves use the same rotor.