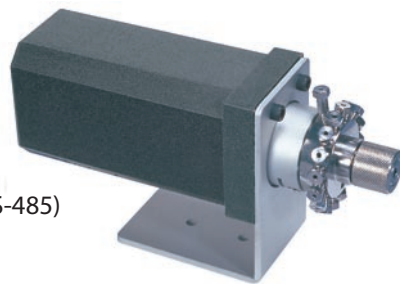


## Microelectric Actuators

- CE certified
- Automatic alignment
- Manual control with position indication
- Remote control by contact closures or TTL logic level signals
- RS-232 bidirectional communication (optional RS-485)
- Two position and selector versions
- Universal power supply, 110/230 VAC to 24 VDC
- 



The microelectric actuator offers Valco dependability in a unit which is less than half the size of our standard model. The actuator consists of a control module, a stepper motor/gearbox assembly, a manual remote control, interconnecting cables, and a 110/230 VAC to 24 VDC power supply. The composite version combines the stepper motor/gearbox assembly with the control module. The RS-232 interface cable, if required, must be ordered separately.

Since different valve models have varying actuation torque requirements, there are five microelectric actuator models for two position valves – EQ, EH, EP, ED, and ET – and two versions

for multiposition – EMH and EMT. Consult the chart on the respective ordering information page to determine which model meets your requirements. When a valve and actuator are ordered at the same time, the proper actuator is supplied automatically.

An actuator can be specified with closemount hardware, with a standoff, or with just the standoff mounting hardware, if your valve already has a standoff. The microelectric actuator is designed for room temperature use. Valves which will be mounted in ovens require a standoff assembly, which locates the actuator out of the heated zone.

### MORE INFORMATION

Microelectric actuators  
For two position . . . . 189  
For selectors . . . . 190-191

### Mounting Hardware

Closemount  
hardware . . . . . page 208  
Right angle drive . . . . . 204  
Standoff assembly . . . . . 205  
Standoff mounting  
hardware . . . . . 205

### TECH TIP

Electric actuators can be directly controlled by signals from microprocessor-based instruments, data systems, or valve programmers, unlike air actuators, which require an interface to convert the signal to an air pulse.

### ORDER TIP

To purchase a **valve with a microelectric actuator installed**, see valve ordering information.

### Valco

Injectors and  
valves . . . . pp 102-116  
Selectors . . . . . 122-133

### Cheminert

Injectors and  
valves . . . . . 152-167  
Selectors . . . . . 170-177