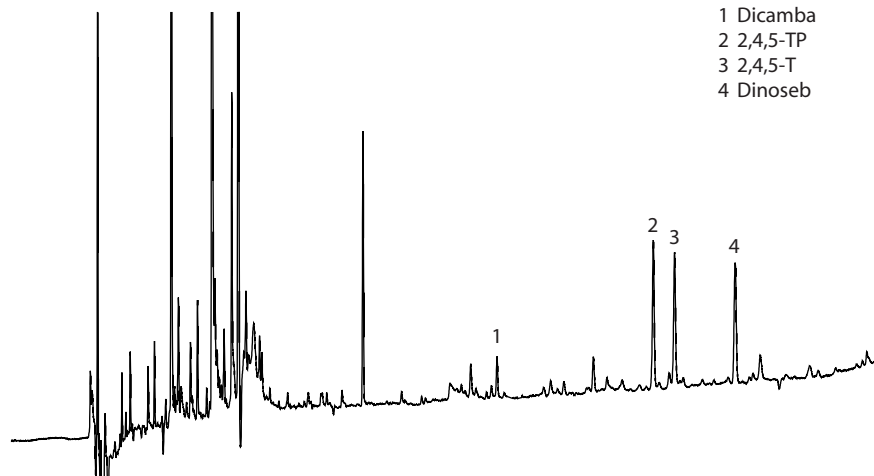


## Pulsed Discharge Detector Applications

### Model D-2

#### HERBICIDES IN SOIL SAMPLES USING EPA METHOD 8151

**Detector:** PDD Model D-2  
**Mode:** Electron capture  
**Sample:** Environmental soil (1 g)  
**Detector temp:** 320°C  
**Column:** ValcoBond VB-5  
 30 m x 0.25 mm x 0.25 µm  
**Column temp:** 60°C (2 min),  
 20°C/min to 180°C,  
 4°C/min to 220°C,  
 40°C/min to 300°C (5 min)  
**Injector temp:** 200°C  
**Sample volume:** 2 µL (solvent microextrac-  
 tion), 1:15 split  
**Discharge gas:** Helium  
**Dopant gas:** Helium/argon  
**Attenuation:** 1

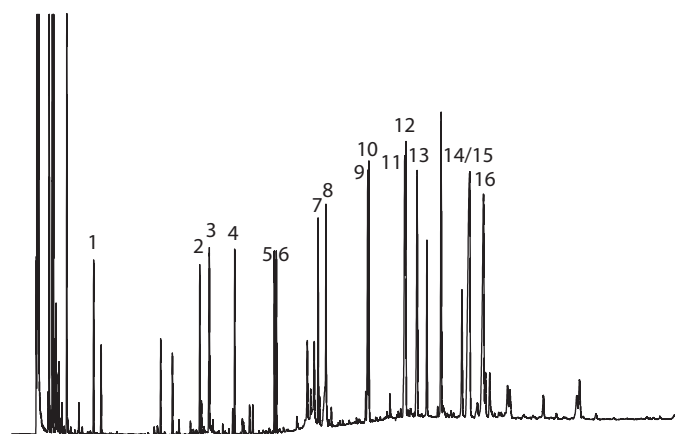


- 1 Dicamba
- 2 2,4,5-TP
- 3 2,4,5-T
- 4 Dinoseb

### PDD Model D-2

#### PAH RESIDUES IN AN ENVIRONMENTAL SOIL SAMPLE SPIKE

**Detector:** PDD Model D-2  
**Mode:** Helium photoionization  
**Sample:** Environmental soil (1 g)  
**Detector temp:** 300°C  
**Column:** ValcoBond VB-35  
 30 m x 0.25 mm x 0.25 µm  
**Column temp:** 120°C for 3 min, 15°C/min  
 to 310°C for 15 min  
**Injector temp:** 275°C  
**Sample volume:** 2 µL (solvent microextrac-  
 tion), 1:15 split  
**Discharge gas:** Helium  
**Dopant gas:** none  
**Attenuation:** 1

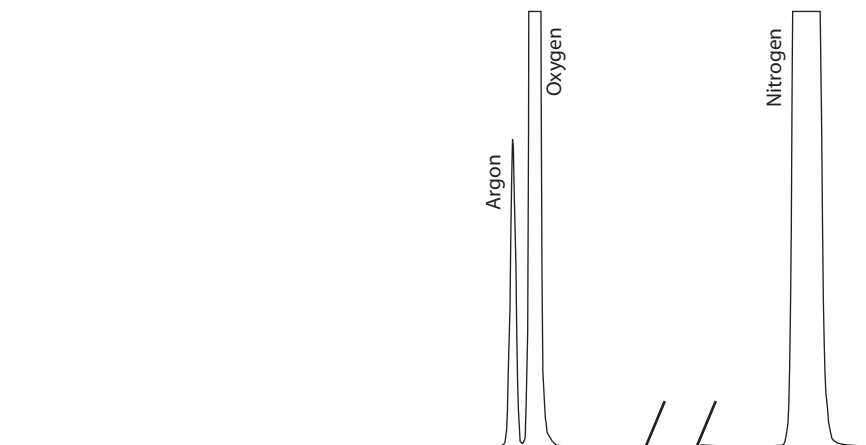


- 1 Naphthalene
- 2 Acenaphthalene
- 3 Acenaphthene
- 4 Fluorene
- 5 Phenanthrene
- 6 Anthracene
- 7 Fluoranthene
- 8 Pyrene
- 9 1,2 Benzantracene
- 10 Chrysene
- 11 Benzo(b)fluoranthene
- 12 Benzo(k)fluoranthene
- 13 Benzo(a)pyrene
- 14 Indeno (1,2,3-C.d)pyrene
- 15 1,2:5,6-Dibenzanthracene
- 16 1,12-Benzoperylene

### PDD Model D-3

#### AIR

**Detector:** PDD Model D-3  
**Mode:** Helium photoionization  
**Detector temp:** 300°C  
**Column:** ValcoPLOT VP-Molesieve  
 30 m x 0.53 mm x 0.50 µm  
**Column temp:** Ambient  
**Injector temp:** 250°C  
**Discharge gas:** Helium  
**Carrier gas:** Helium



CHROMalytic TEChnology Pty Ltd AUSTRALIAN Distributors e-mail: [sales@chromtech.net.au](mailto:sales@chromtech.net.au) Tel: 03 9762 2034