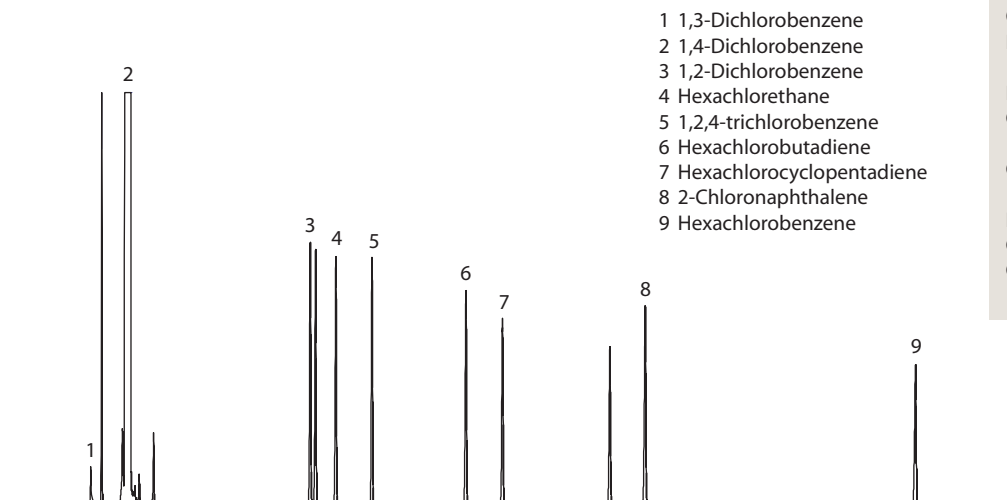


## Pulsed Discharge Detector Applications

### PDD Model D-3

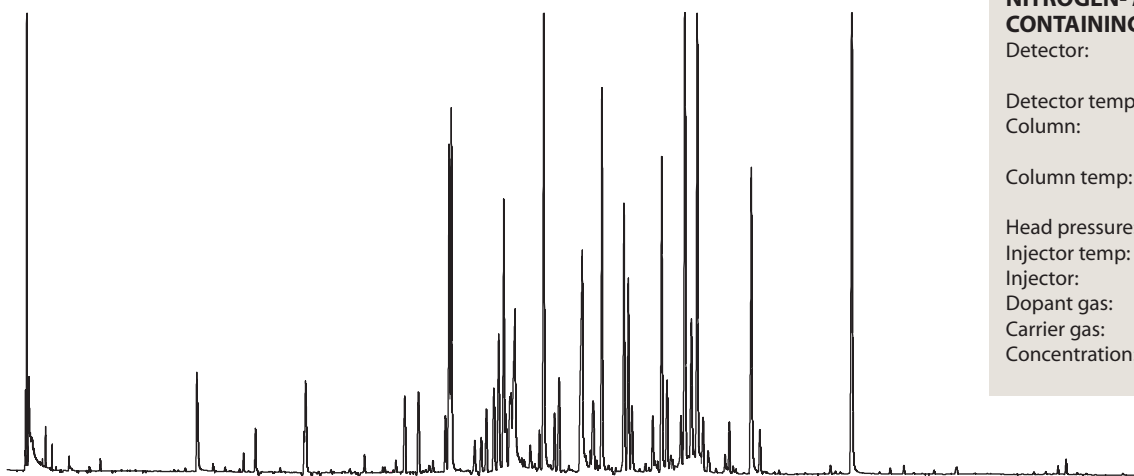


- 1 1,3-Dichlorobenzene
- 2 1,4-Dichlorobenzene
- 3 1,2-Dichlorobenzene
- 4 Hexachlorethane
- 5 1,2,4-trichlorobenzene
- 6 Hexachlorobutadiene
- 7 Hexachlorocyclopentadiene
- 8 2-Chloronaphthalene
- 9 Hexachlorobenzene

#### CHLORINATED HYDROCARBONS

Detector: PDD Model D-3  
Helium photoionization  
Detector temp: 280°C  
Column: ValcoBond VB-5  
30 m x 0.25 mm x .25 µm  
Column temp: 60°C initial to  
320°C at 10°C/min  
Injector temp: 280°C  
Carrier gas: Helium  
Concentration: 5 mg/ml

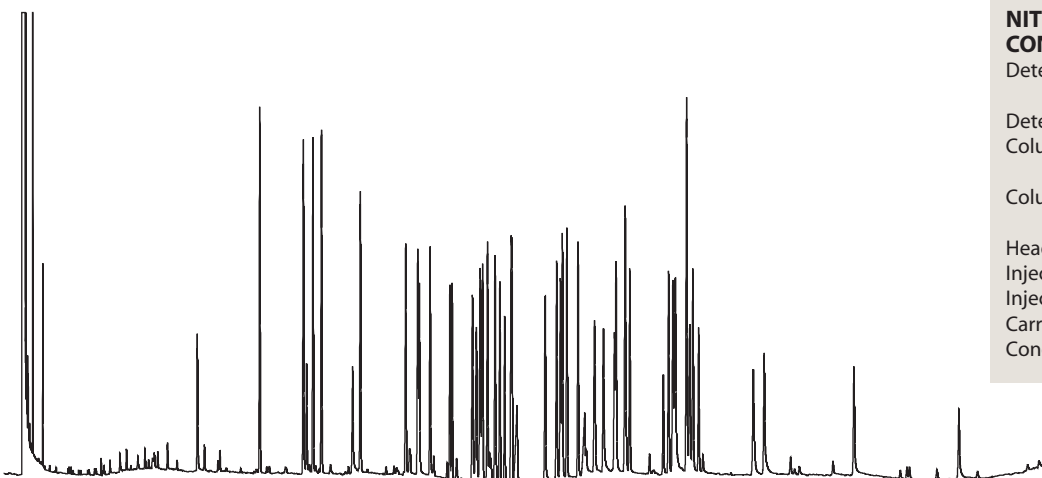
### PDD Model D-5



#### NITROGEN- AND PHOSPHOROUS-CONTAINING PESTICIDES

Detector: PDD Model D-5  
Electron capture  
Detector temp: 280°C  
Column: ValcoBond VB-5  
30 m x 0.25 mm x .25 µm  
Column temp: 60°C initial to  
320°C at 10°C/min  
Head pressure: 15 psi  
Injector temp: 280°C  
Injector: Split 1:10  
Dopant gas: 3% Xenon in helium  
Carrier gas: Helium  
Concentration: 0.8 mg/ml

### PDD Model D-3



#### NITROGEN- AND PHOSPHOROUS-CONTAINING PESTICIDES

Detector: PDD Model D-3  
Helium photoionization  
Detector temp: 280°C  
Column: ValcoBond VB-5  
30 m x 0.25 mm x .25 µm  
Column temp: 60°C initial to  
320°C at 10°C/min  
Head pressure: 15 psi  
Injector temp: 280°C  
Injector: Split 1:10  
Carrier gas: Helium  
Concentration: 2.5 mg/ml