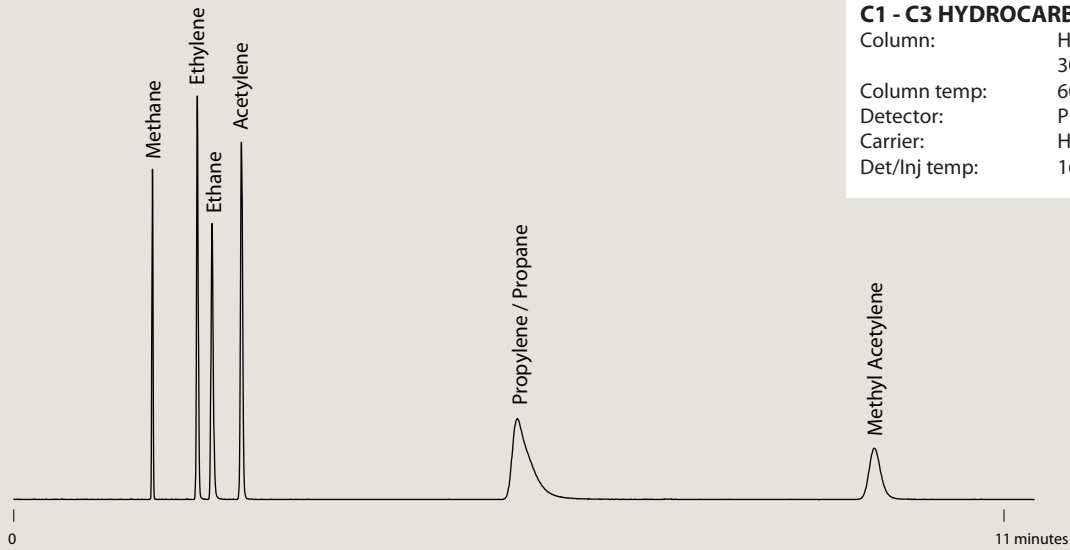


ValcoPLOT A



C1 - C3 HYDROCARBONS

Column: HayeSep A PLOT
 30m x .53mm x 20.0µm
 Column temp: 60°C isothermal
 Detector: PDD
 Carrier: Helium
 Det/Inj temp: 165°C

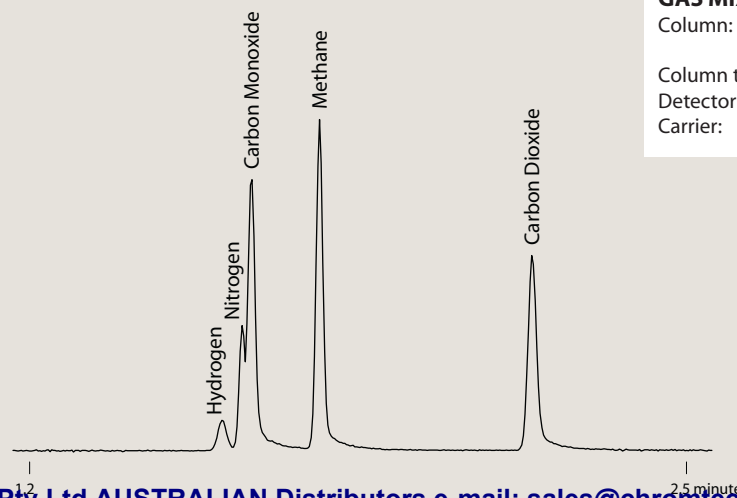
ValcoPLOT D



C1 - C3 HYDROCARBONS

Column: HayeSep D PLOT
 30m x .53mm x 20.0µm
 Column temp: 60°C isothermal
 Detector: PDD
 Carrier: Helium
 Det/Inj temp: 250°C

ValcoPLOT D



GAS MIXTURE

Column: HayeSep D PLOT
 30m x .53mm x 20.0µm
 Column temp: 40°C isothermal
 Detector: PDD
 Carrier: Helium