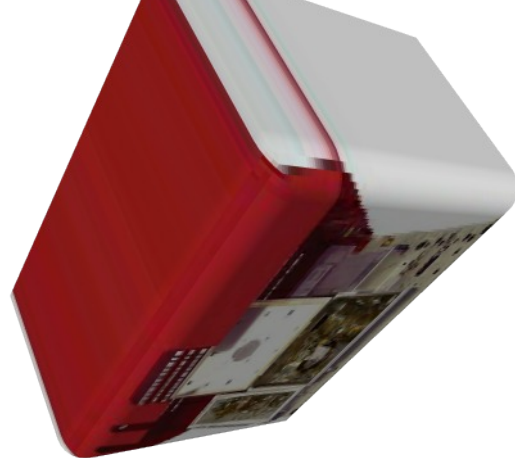


Tubing

METAL AND POLYMERIC

We offer chromatography grade tubing in a variety of polymers as well as stainless steel. Outside diameters are 360 µm, 1/32", 1/16", 1/8", and 1/4".



Tubing index

PEEK tubing

Natural PEEK.....page 5

Available in ODs from 360 micron to 1/4", in custom lengths (priced per meter) and packages of 3 and 10 meters.

Striped color-coded PEEK 6

A stripe is added to the outside of the tubing, so dye never contacts the fluid stream.

Dual-layer PEEK..... 7

With an inner layer of natural PEEK and an outer layer of color-coded PEEK, there is no possibility of stream contents coming in contact with coloring agents.

Solid color-coded PEEK..... 8

Color coding identifies the ID or your PEEK tubing. Each ID is coded with a different color.

Other polymeric tubing

ETFE..... 9

FEP

Solid color-coded 10

Natural 11

PFA 9

PTFE

Solid color-coded 12

Natural 12

Thermo-formed polymeric tubing 13

Impermeable tubing 13

FEP coated with PVDF combines the chemical resistance of FEP with the tight, impermeable structure of PVDF.

Stainless steel tubing

Pre-cut SStubing

Pre-cut tubing 14

Flexible pre-cut tubing 14

1/32" tubing with 1/16" ends.

Bulk SStubing

Premium grade, seamless 15

Standard grade, welded seam 15

DISCLAIMER

The maximum holding pressure for any type of connections involving tubing and a ferrule varies considerably with the tubing material, the ferrule material, the clearance between tubing OD and ferrule ID, and the shape of the fitting detail.

RELATED PRODUCTS

SolviFlex
coiled tubing 70

Tubing tools and accessories

Easy-Flange kit 85

Easy-Flange combi kit . 85

PEEK tubing elbows . 86

Tubing cutters for polymeric tubing

Clean-cut 86

Guillotine..... 86

Tubing cutters for stainless tubing

Cutting wheel type . 87

Plier type 87

Tubing clip – the LC

