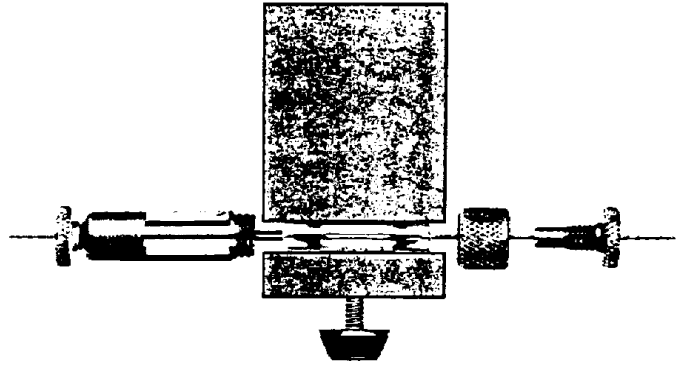




# Vu-Union® Vu-Union" Helping Hand

The Helping Hand is a custom holder designed to hold the metal housing of the Vu-Union" in place. This allows the user freedom of both hands to assemble the columns in the glass insert and tighten the knurled nuts. The helping hand will be included, free of charge, with all Vu-Union" connectors except the "Y" Vu-Union \*.



## Vu-Union" Connectors

- Capillary: cat.# 20418
- Microbore: cat.# 20416
- High Pressure: cat.# 20425
- Vacuum: cat.# 20427

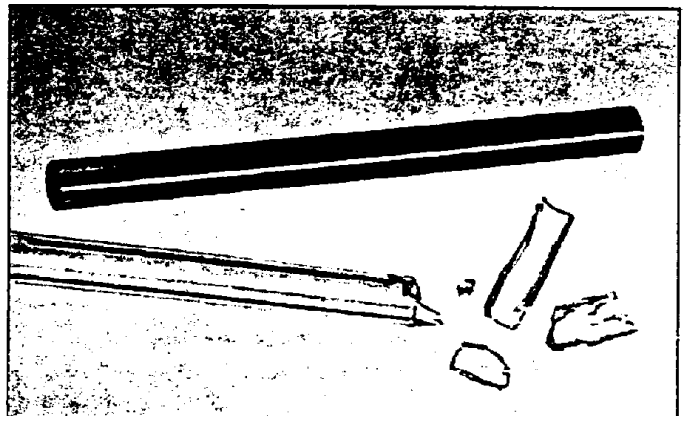
## Innovative Silcosteel Metal Inlet Sleeves. NOW pre-packed with Fused Silica Wool

- Pre-packed with deactivated fused silica wool.
- Equivalent inertness to glass sleeves.
- Excellent response for pesticides, phenols and other active compounds.
- Silcosleeve" inlet sleeves won't crack, chip, or break like glass sleeves.
- Inexpensive and cost effective.

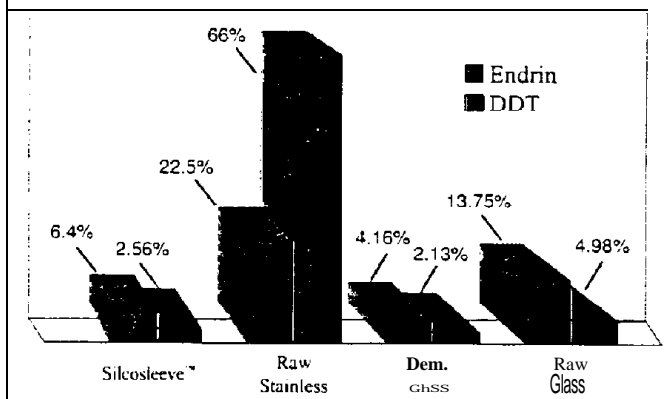
inertness as our glass inlet sleeves. These sleeves are ideal for split/splitless applications requiring frequent changing of inlet sleeves to keep the injector

contamination free. These sleeves are also excellent for portable GCs since they will not break during transportation or installation on site.

Restek has developed a new inlet sleeve with inertness equivalent to deactivated glass. Utilizing our advanced "Silcosteel" process, metal sleeves are coated with a fused silica layer and then deactivated offering the same



Comparison of Endrin & DDT Breakdown



## Silcosleeve" Metal Inlet Sleeve pre-packed with FS wool for HP GCs

OD/ID & Length  
6.35mm/5.2mm & 78.5mm

5-Pack	25-Pack
21700'	21701'

\*Add appropriate suffix to Cat# to order glasswool or beads instead

Quantity	FS Beads Suffix	Glass Wool Suffix
5Pk.	-201.5	-202.5
25-Pk.	-201.25	-202.25