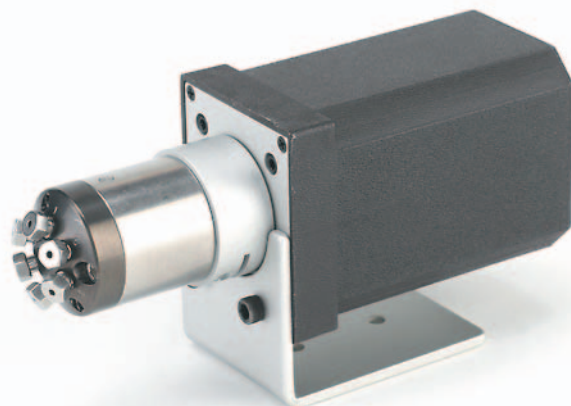


Model C72 High Pressure UHPLC Injector

- Rated to 10,000, 15,000, or 20,000 psi
- 1/32" or 1/16" fittings
- Works with all VICI actuation options
- 4, 6, 8, and 10 port models



Many of the latest analytical techniques require systems capable of pressures up to 10,000, 15,000, or even 20,000 psi. The new C72 series injectors from Cheminert feature a proprietary rotor material and stator coating that permit these pressures. C72 injectors are available in a variety of configurations, including some models with a vertical injection port. (Consult the factory for more information.)

Actuation

The injectors use the same mounting system as the widely used Cheminert C2 series HPLC injectors. Our microelectric actuator determines accurate positioning without limit switches or customer adjustment. Computer control is facilitated via RS-232 or RS-485 interface, but it can also be controlled manually. The actuator is CE-certified, and includes an autosensing 110/230 VAC to 24 VDC universal power supply.

Specifications

Max. operating pressure	10,000, 15,000, or 20,000 psi
Configurations available	4, 6, 8, and 10 port; 1/32" and 1/16" fittings
Bore size	100, 150, or 250 micron for 1/32" fittings 150 or 250 micron for 1/16" fittings (400 micron in some configurations)
Stator material	Stainless steel with inert coating
Rotor material	Special high-strength PAEK (Valcon E3)
Microelectric actuator automation options	RS-232, RS-485 (optional), contact closure, TTL logic level signals

North America, South America, and Australia/Oceania contact:

VICI® Valco Instruments Co. Inc.
tel: 800 367-8424
fax: 713 688-8106
valco@vici.com

Europe, Asia, and Africa contact:

VICI® VICI AG International
tel: Int + 41 41 925-6200
fax: Int + 41 41 925-6201
info@vici.ch

Rev 8/08

VICI® and Cheminert®
are registered trademarks of
Valco Instruments Co. Inc. and VICI AG

1/32" fittings

	4 Port	6 Port	8 Port	10 port	10,000 psi
<hr/>					
100 micron bore					
Manual	C72NH-4694	C72NH-4696	C72NH-4698	C72NH-4690	
Actuated	C72NH-4694EH	C72NH-4696EH	C72NH-4698ED	C72NH-4690ED	
150 micron bore					
Manual	C72NH-6694	C72NH-6696	C72NH-6698	C72NH-6690	
Actuated	C72NH-6694EH	C72NH-6696EH	C72NH-6698ED	C72NH-6690ED	
250 micron bore					
Manual	C72NH-1694	C72NH-1696	C72NH-1698	C72NH-1690	
Actuated	C72NH-1694EH	C72NH-1696EH	C72NH-1698ED	C72NH-1690ED	
<hr/>					
100 micron bore					15,000 psi
Manual	C72NX-4694	C72NX-4696	C72NX-4698	C72NX-4690	
Actuated	C72NX-4694EH	C72NX-4696EH	C72NX-4698ED	C72NX-4690ED	
150 micron bore					
Manual	C72NX-6694	C72NX-6696	C72NX-6698	C72NX-6690	
Actuated	C72NX-6694EH	C72NX-6696EH	C72NX-6698ED	C72NX-6690ED	
250 micron bore					
Manual	C72NX-1694	C72NX-1696	C72NX-1698	C72NX-1690	
Actuated	C72NX-1694EH	C72NX-1696EH	C72NX-1698ED	C72NX-1690ED	
<hr/>					
100 micron bore					20,000 psi
Manual	C72NU-4694	C72NU-4696			
Actuated	C72NU-4694ED	C72NU-4696ED			
150 micron bore					
Manual	C72NU-6694	C72NU-6696			
Actuated	C72NU-6694ED	C72NU-6696ED			
250 micron bore					
Manual	C72NU-1694	C72NU-1696			
Actuated	C72NU-1694ED	C72NU-1696ED			

1/16" fittings

	4 Port	6 Port	8 Port	10 port	10,000 psi
<hr/>					
150 micron bore					
Manual	C72H-6694	C72H-6696	C72H-6698	C72H-6690	
Actuated	C72H-6694EH	C72H-6696EH	C72H-6698ED	C72H-6690ED	
250 micron bore					
Manual	C72H-1694	C72H-1696	C72H-1698	C72H-1690	
Actuated	C72H-1694EH	C72H-1696EH	C72H-1698ED	C72H-1690ED	
<hr/>					
150 micron bore					15,000 psi
Manual	C72X-6694	C72X-6696	C72X-6698	C72X-6690	
Actuated	C72X-6694EH	C72X-6696EH	C72X-6698ED	C72X-6690ED	
250 micron bore					
Manual	C72X-1694	C72X-1696	C72X-1698	C72X-1690	
Actuated	C72X-1694EH	C72X-1696EH	C72X-1698ED	C72X-1690ED	
<hr/>					
150 micron bore					20,000 psi
Manual	C72U-6694	C72U-6696			
Actuated	C72U-6694ED	C72U-6696ED			
250 micron bore					
Manual	C72U-1694	C72U-1696			
Actuated	C72U-1694ED	C72U-1696ED			